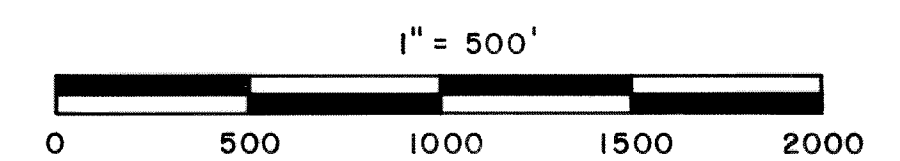
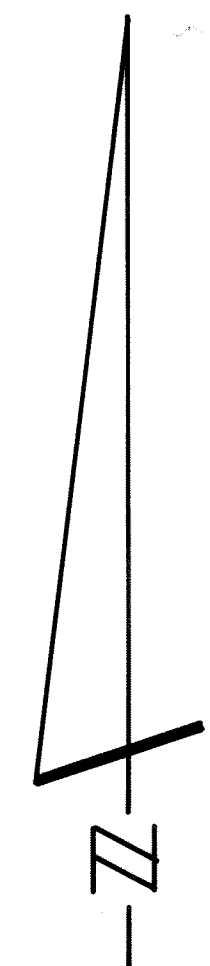
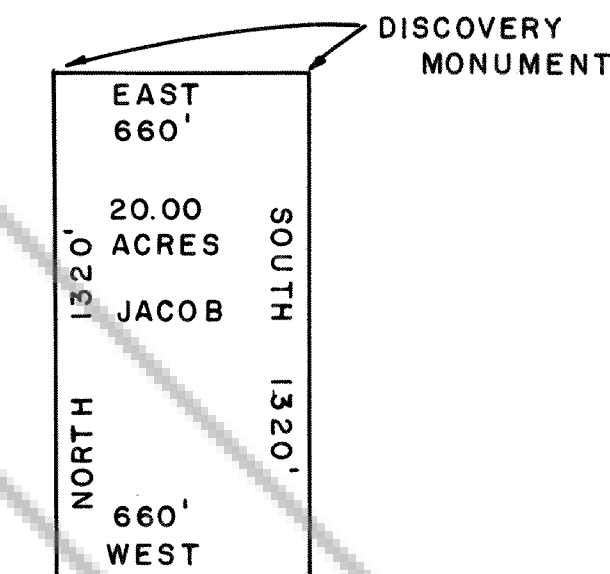


NOTES:

- LOCATION ON NORTHERLY BOUNDARY AS INDICATED.
- DISCOVERY MONUMENTS ARE 4" PVC PIPE WITH NOTICE ATTACHED.
- CLAIMS STAKED BY ALIQUET PARTS.
- DISCOVERY MONUMENT IS DESIGNATED BY ●
- TYPICAL CLAIM (UNLESS OTHERWISE NOTED)



97595
 Frank C. Hulse
 Oct. 27, 1991
 30 MINUTES 2
 P. 98
 614
 Yunko Setzer
 Rhonda Zehner, Deputy

MAP TO ACCOMPANY CERTIFICATES OF LOCATION FOR JACOB CLAIM GROUP NO.'S 1-13 LOCATED IN SECTION 32, TIN, R67E, M.D.B. & M. AND SECTION 4, T1S, R67E, M.D.B. & M. IN THE ELY MINING DISTRICT, LINCOLN COUNTY, NEVADA BY MOUNTAIN MINES INC.