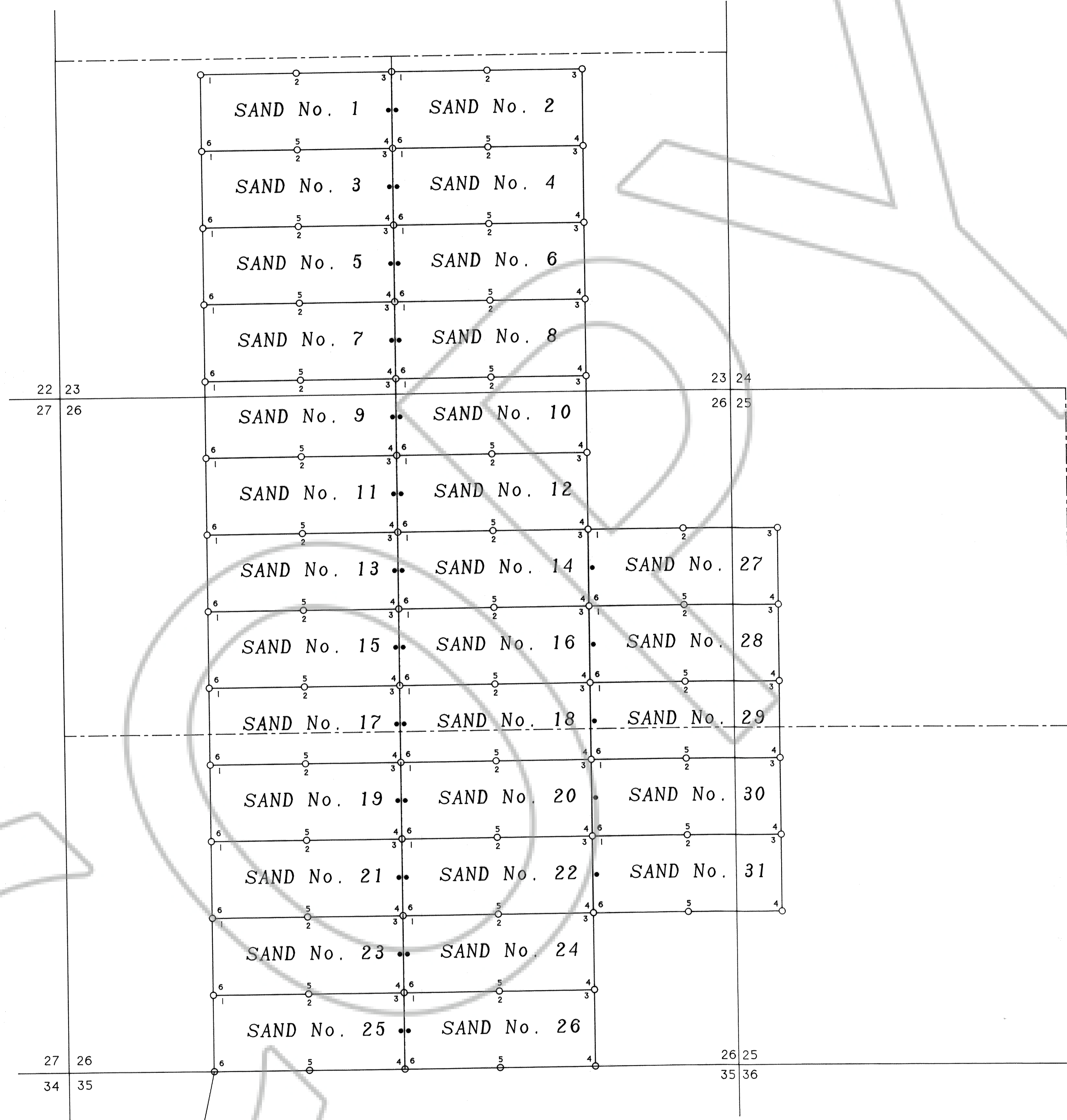


TOWNSHIP 2 SOUTH.. RANGE 55 EAST.. M.D.B.& M.

BASIS OF BEARINGS
SOLAR OBSERVATION

500 0 500
SCALE - 1" = 500'



PROFESSIONAL LAND SURVEYOR
STATE OF NEVADA
RANDAL L. BRIGGS
No. 7998
July 22, 1991

NOTES :

1. All claims are 600' wd. x 1500' lg. with location monuments 10' from end lines except as shown and noted.
2. ● = Location Monuments
○ = Claim Corners
3. Location Dates :
SAND No. 1 thru. 31, July 12, 1991
4. There are a total of 31 claims
5. Basis of Bearings = Solar Observation

97197
RECORDED AT REQUEST OF
Pioneer Oil & Gas
Aug. 12, 1991
RECORDED IN BOOK 97 OF OFFICIAL RECORDS
PAGE 619 LINCOLN COUNTY NEVADA
J. L. S. J. S.

FOUND BLM 1964
BRASS CAP
R. 55 E.
T. 2 S.
3435
312
T. 3 S.
BLM

PREPARED BY
BRIGGS & ASSOCIATES
E. ELY, NEVADA
JULY 1991

MAP SHOWING
SAND GROUP
LODE CLAIMS
T. 2 S., R. 55 E., M.D.B.& M.
UNKNOWN MINING DISTRICT
LINCOLN COUNTY, NEVADA
OWNERS : PIONEER OIL and GAS
6925 UNION PARK CENTER, SUITE 145
MIDVALE UTAH, 84047