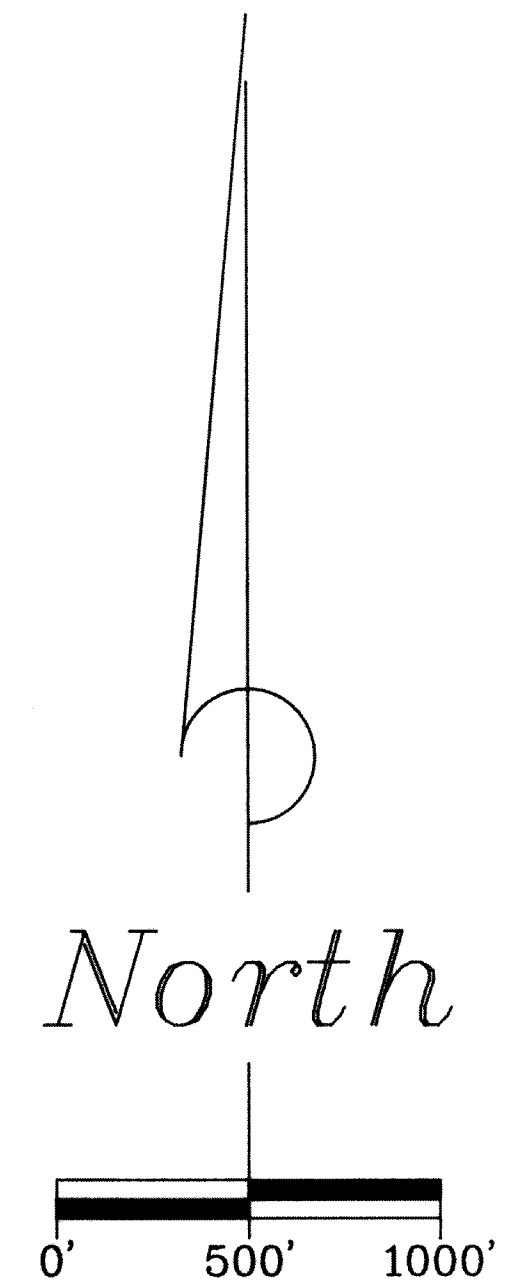
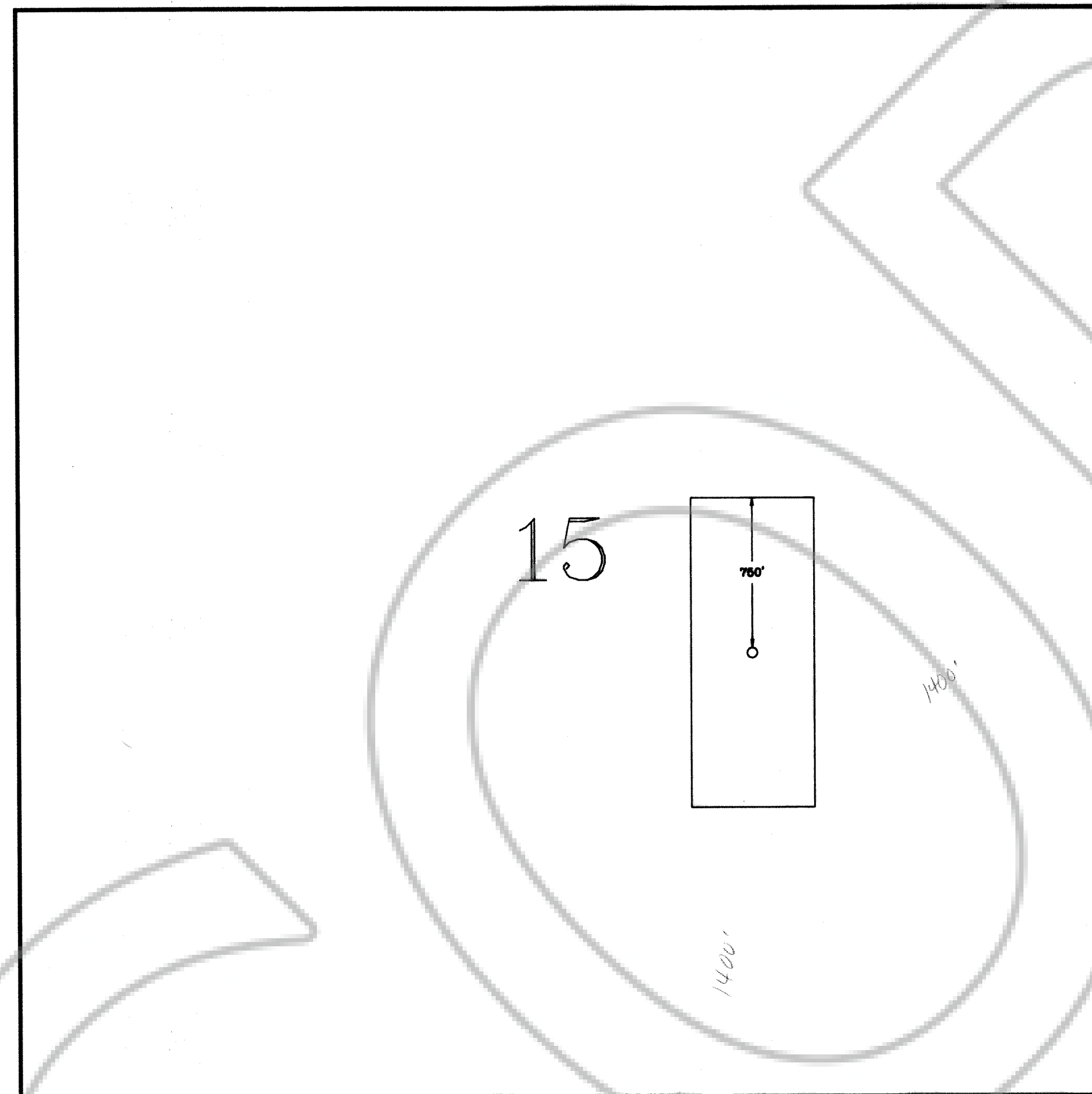
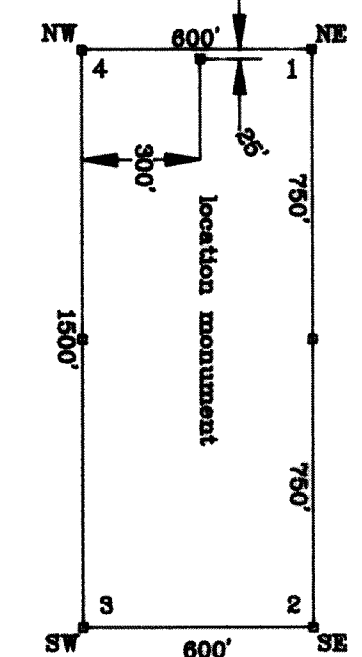


A MAP OF THE BOBCAT GAP LODGE CLAIM
 T. 7 N., R. 68 E., M.D.M.
 LINCOLN COUNTY, NEVADA



TYPICAL CLAIM



NOTE: All section lines are projected.
 NOTE: All corners and location monuments are 3" PVC pipe.

BASIS OF BEARING:
 Magnetic North using 16' East declination.

TIE: The Northeast corner of BOBCAT GAP is 121.53 ft. North and 688.14 ft. East of U.S.L.M. 4843.

DATES OF LOCATION:
 BOBCAT GAP on May 23, 1991.

96807
 Gold Fields Mining
 June 5, 1991
 15
 97
 55
 Yuriko Scher, (rs)

		GOLD FIELDS MINING COMPANY	
		1687 Cole Blvd., P.O. Box 4014 Golden, Colorado 80402-4014	
SURVEYED BY	DATE	CHK. BY	
D.S.	6-23-91		
DRAWN BY	SCALE	ACCT. NO.	
D.H.	1"=500'	J9148117	SHEET 1 of 1