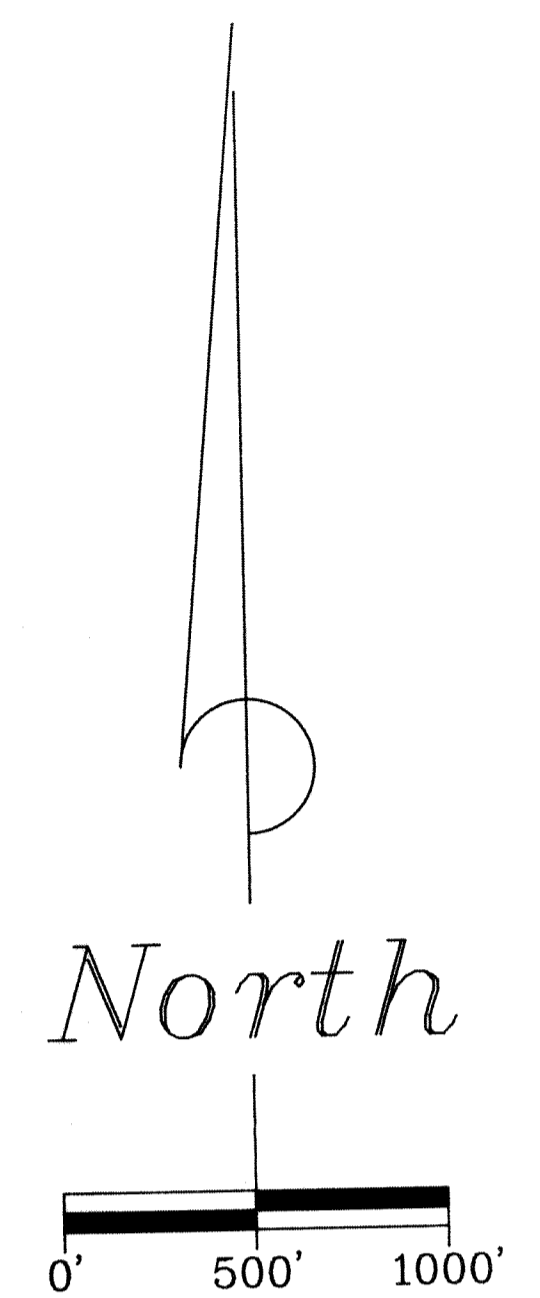
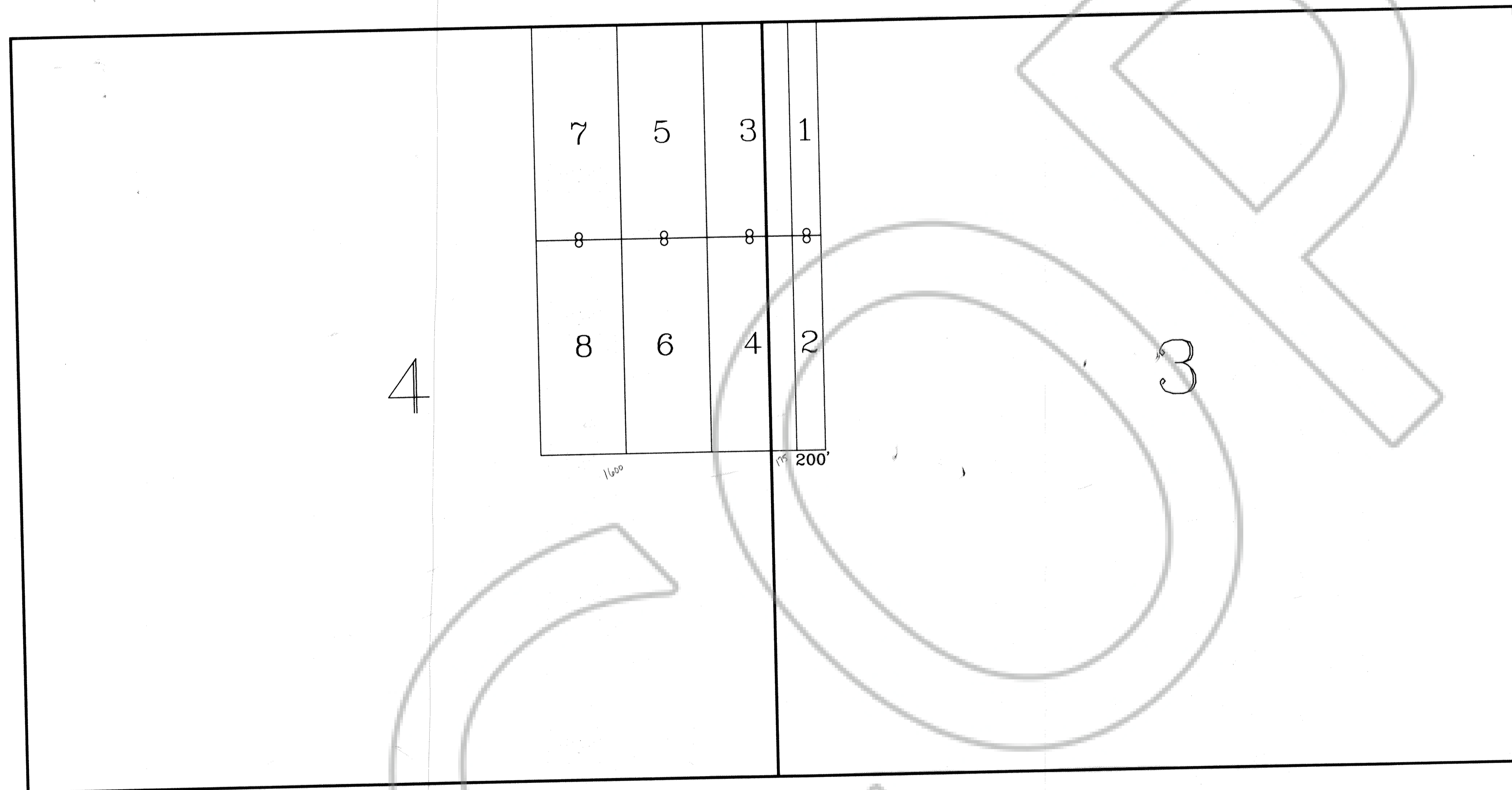


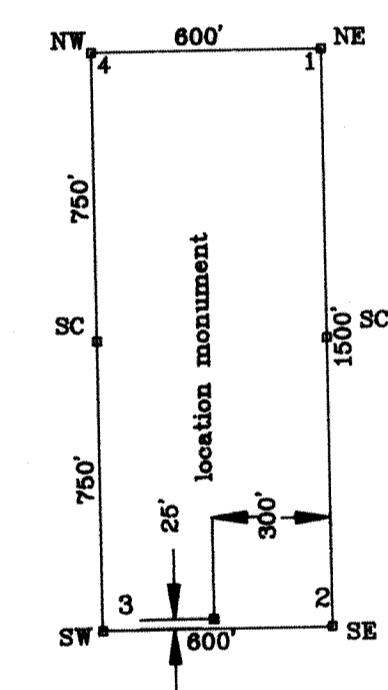
# A MAP OF THE COYOTE LODGE CLAIMS

## T. 7 N., R. 68 E., M.D.M.

### LINCOLN COUNTY, NEVADA



TYPICAL CLAIM



NOTE:  
All section lines are projected.

NOTE:  
All corners and location monuments are 3" PVC pipe.

BASIS OF BEARING:  
All bearings are based on a solar taken at USLM 4843, T. 7 N., R. 68 E., M.D.M. on December 15, 1990.

TIE: The Northeast corner of Coyote 1 bears North 13058.06 ft. and West 2806.25 ft. from U.S.L.M. 4843.

DATE OF LOCATION: Coyote 1-8 on April 7, 1991.

96803  
 RECORDED AT REC. 12  
 Gold Fields Mining  
 June 5, 1991  
 15  
 P 2697  
 REC 51  
 Yuriko Setzer (r2)  
 COUNTY REC

GOLD FIELDS MINING COMPANY	
1687 Cole Blvd., P.O. Box 4014 Golden, Colorado 80402-4014	
SURVEYED BY D.S.	DATE 4-20-91
DRAWN BY M.D.	SCALE 1"=500'
E. SCHAAF & ASSOCIATES 181 PALMER DRIVE, COLORADO STATE U.S. 18487-U.S. MINERAL SURVEYOR	
ACCT. NO. J9148112	SHEET 1 of 1