

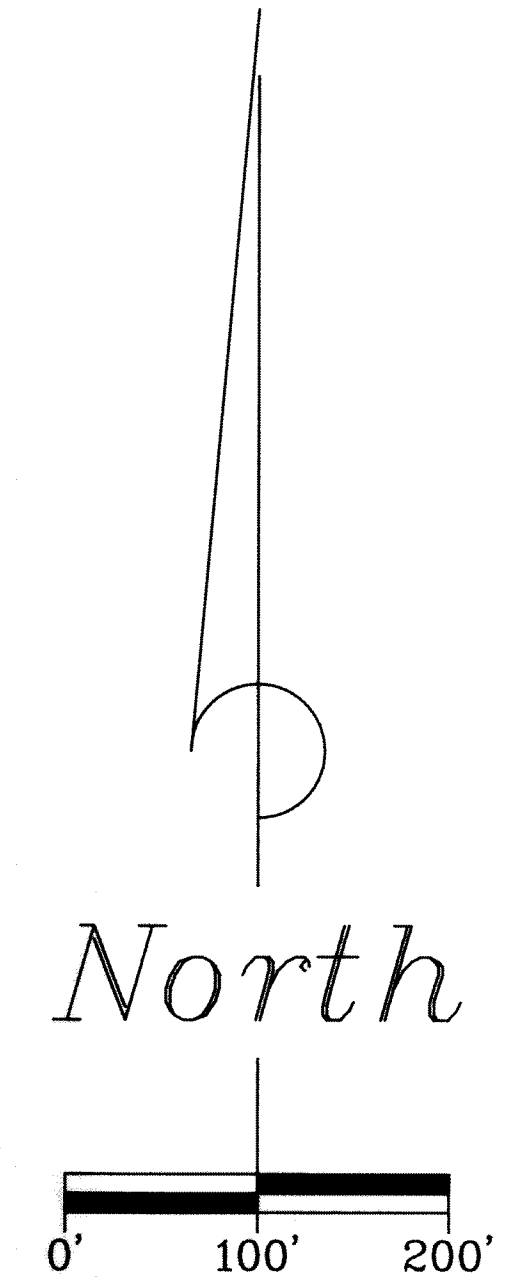
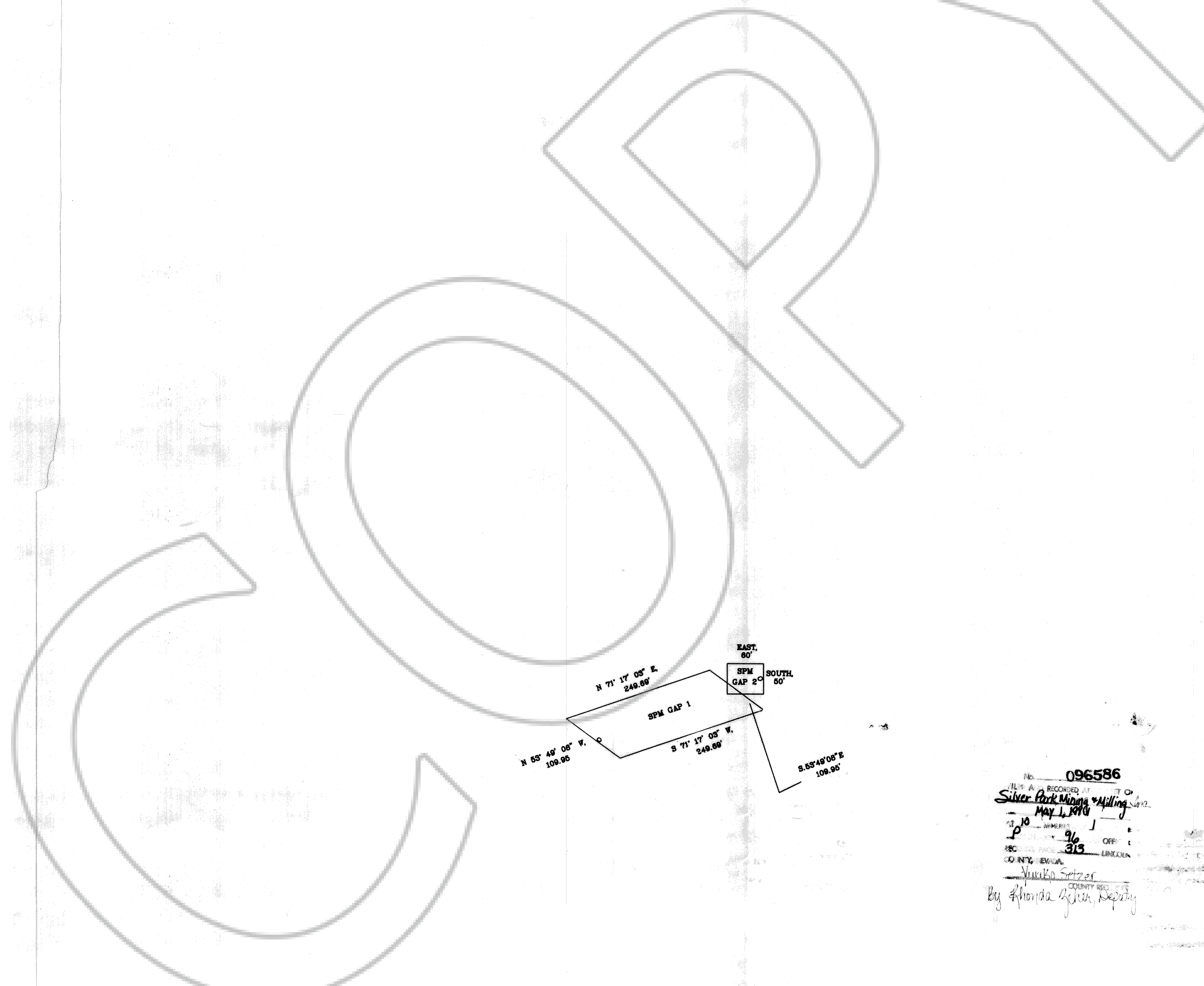
A MAP OF THE SPM GAP LODE CLAIMS  
 T. 7 N., R. 68 E., M.D.M.  
 LINCOLN COUNTY, NEVADA

17

16

20

21



NOTE: All section lines are projected.  
 NOTE: All corners and location monuments are 3" PVC pipe.  
 BASIS OF BEARING:  
 Magnetic North using 16° East declination.  
 TIE: The Northeast corner of SPM GAP 1 is S 60° 56' 27" W, 8041.89 feet of the U.S.L.M. 4843.  
 TIE: The Northeast corner of SPM GAP 2 is S 60° 41' 55" W, 7959.11 feet of the U.S.L.M. 4843.  
 Date of Location:  
 SPM GAP 1-2 on March 13, 1991.

No. 096586  
 THIS IS A RECORDED COPY  
 Silver Park Mining & Milling  
 May 1, 1991  
 P. 96 OFF. 313  
 COUNTY, NEVADA  
 Nunita Setzer  
 COUNTY REC. CLERK  
 By Rhonda Lynn, Deputy

SURVEYED BY		DATE	CHKD. BY	E. SCHAAF & ASSOCIATES <small>361 PALMER DELTA, COLORADO 81416 N.L.S. 1847-U.S. MINERAL SURVEYOR</small>
D.S.		3-25-91		
DRAWN BY		SCALE	ADCT. NO.	
D.N.		1"=100'	J9148111	SHEET 1 of 1