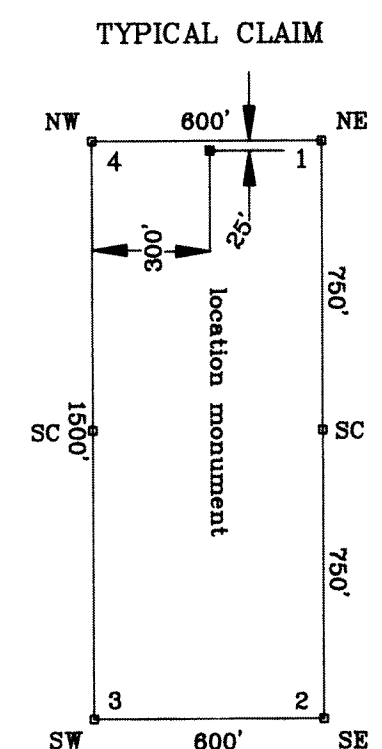
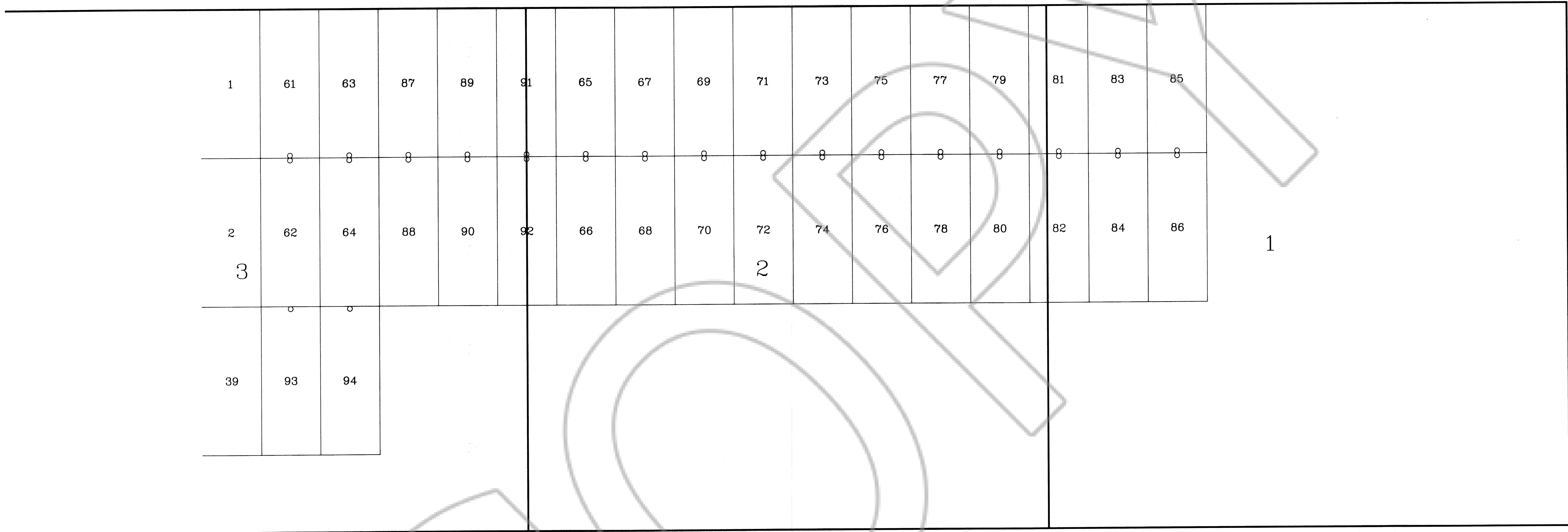


# A MAP OF THE BUCK LODE CLAIMS

## T. 7 N., R. 68 E., M.D.M.

### LINCOLN COUNTY, NEVADA



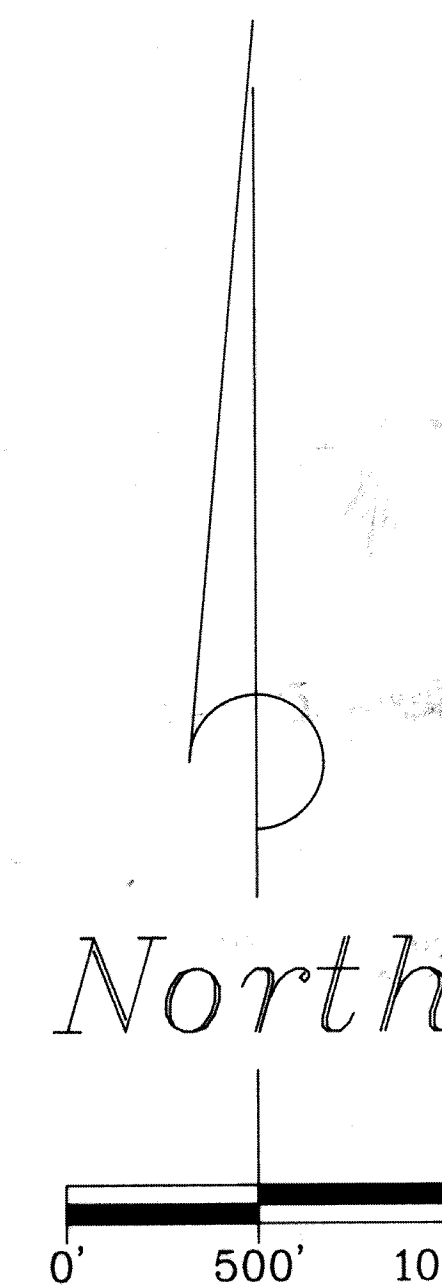
All monuments are 3" OD  
PVC pipe 5' in length.

**BASIS OF BEARING:**  
All bearings are based on magnetic North using 16' E. declination.

**NOTE:**  
All Section lines are projected.

**TIE:**  
Corner No. 4 (the Northwest Cor.) of the BUCK 61 bears North 13,058.06 ft. and West 606.25 ft. from USLM 4843

**DATES OF LOCATION:**  
BUCK 61 and 62 on Jan. 12, 1991  
BUCK 65 to 68 on Jan. 13, 1991  
BUCK 63 to 64 and 87 to 92 on Feb. 22, 1991  
BUCK 93 and 94 on Feb. 28, 1991



086130  
RECORDED AT COUNTY CLERK'S OFFICE OF  
GOLD FIELDS MINING CORP.  
MARCH 20 1991  
BY YUKIO SETTEK  
MARIA CONCEPCION REYES

BOOK 95 PAGE 194

		<b>GOLD FIELDS MINING CORP.</b>	
		1687 Cole Blvd., P.O. Box 4014 Golden, Colorado 80402-4014	
SURVEYED BY	DATE	CRD. BY	E. SCHAAF & ASSOCIATES
D.S.	3-4-91		
DRAWN BY	SCALE	ACCT. NO.	
D.H.	1"=500'	J914811B	SHEET 2 of 2