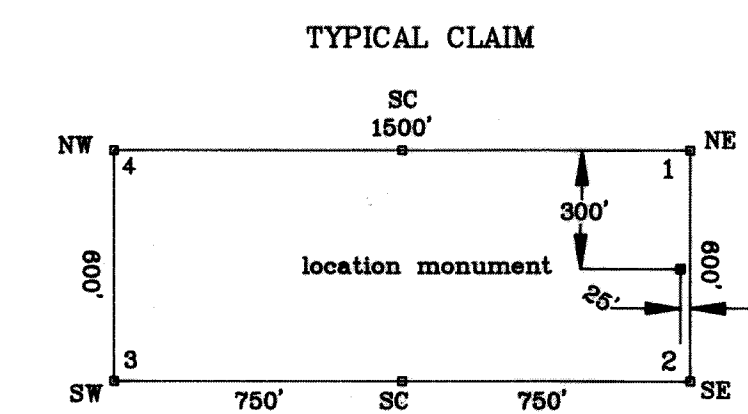
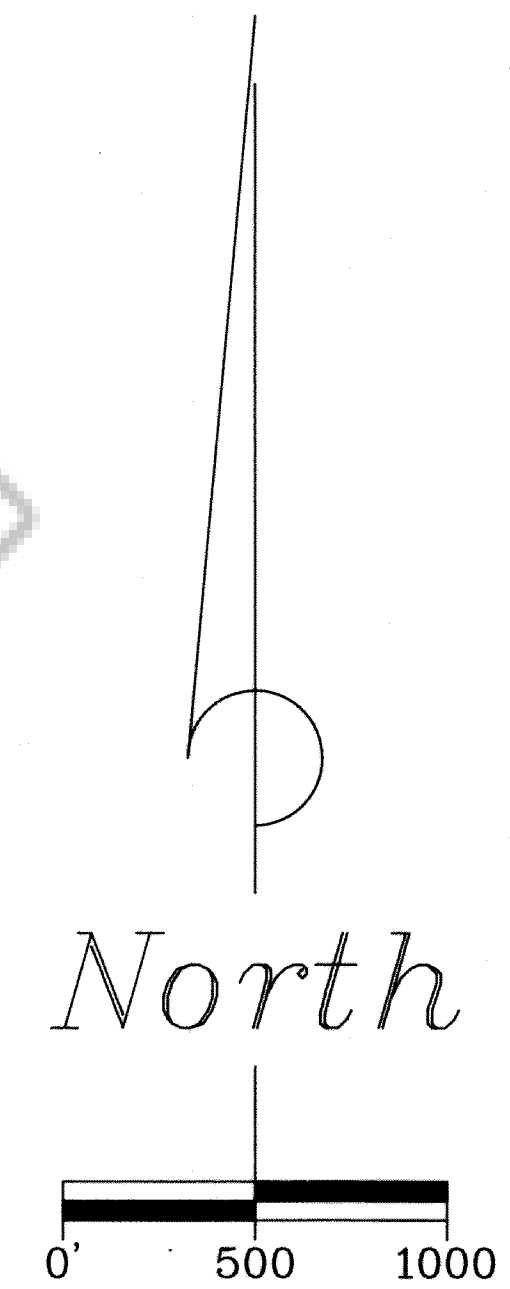
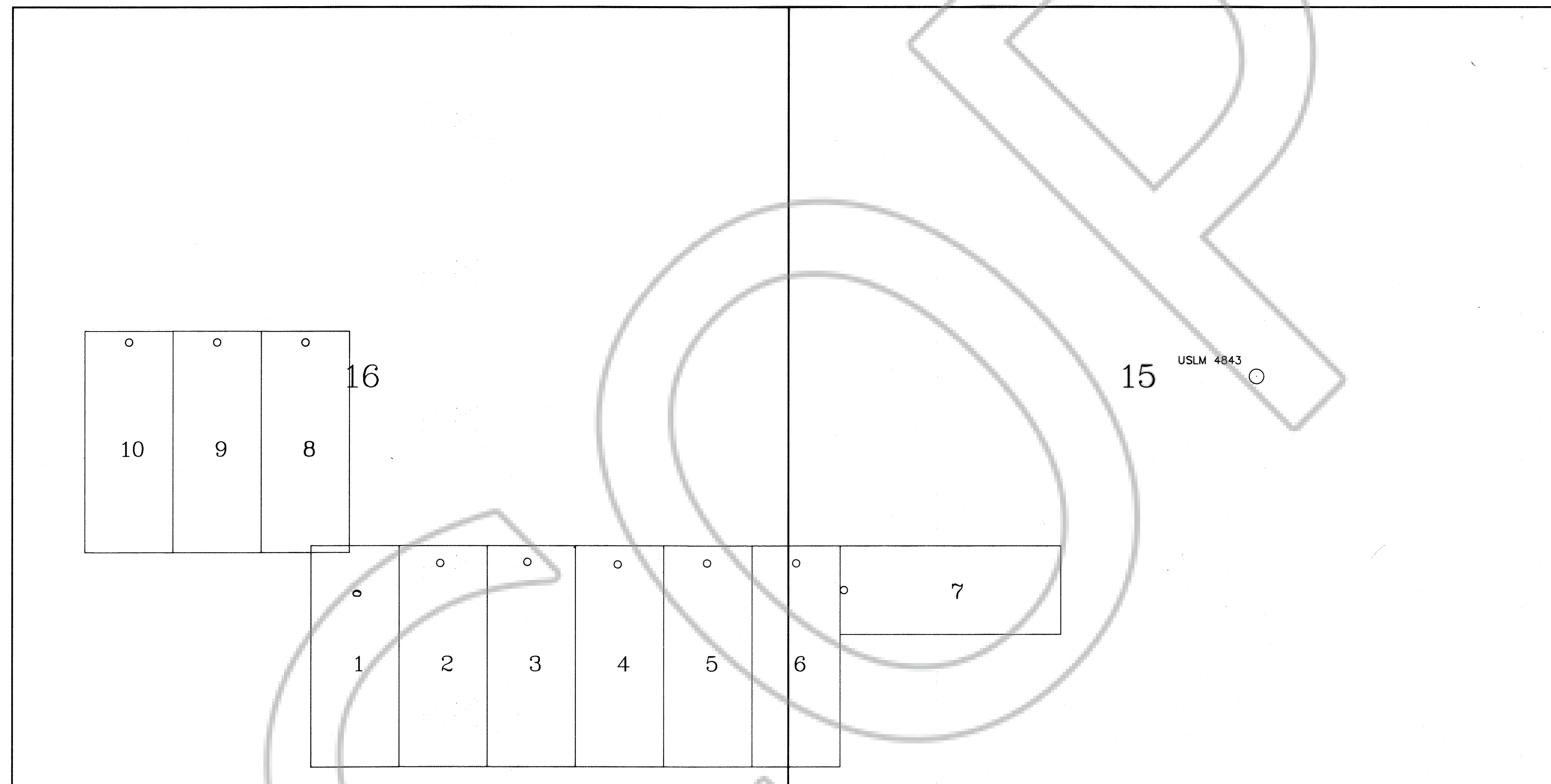


A MAP OF THE UP CLAIMS
T. 7 N., R. 68 E., M.D.M.
LINCOLN COUNTY, NEVADA



All monuments are 3" OD
PVC pipe 5' in length.

BASIS OF BEARING:
All bearings are based on magnetic North, using 16° E. declination.

NOTE:
All section lines are projected.

DATES OF LOCATION:
January 10, 1991 - UP 1 - 7
January 12, 1991 - UP 8 - 10

TIE:
USLM 4843 bears North, 1150 feet and East, 1331 feet from
the Northeast Corner of UP 7.
USLM 4843 bears South, 304 feet and East, 6170 feet from
the Northeast Corner of UP 8.

096008
L.A. RECORD TO
Gold Fields Mining Corp.
March 14, 1991
A 94 OFF
SC 1665
LINCOLN
Junko Setzer
Shonda Zher Deputy

		GOLD FIELDS MINING CORP.	
		1687 Cole Blvd., P.O. Box 4014 Golden, Colorado 80402-4014	
SURVEYED BY	DATE	CKD. BY	
D.S.	3-4-91	E. SCHAAF & ASSOCIATES	
DRAWN BY	SCALE	ACCT. NO.	
D.S.	1"=500'	J914812	SHEET 1 of 1

BOOK 94 PAGE 665