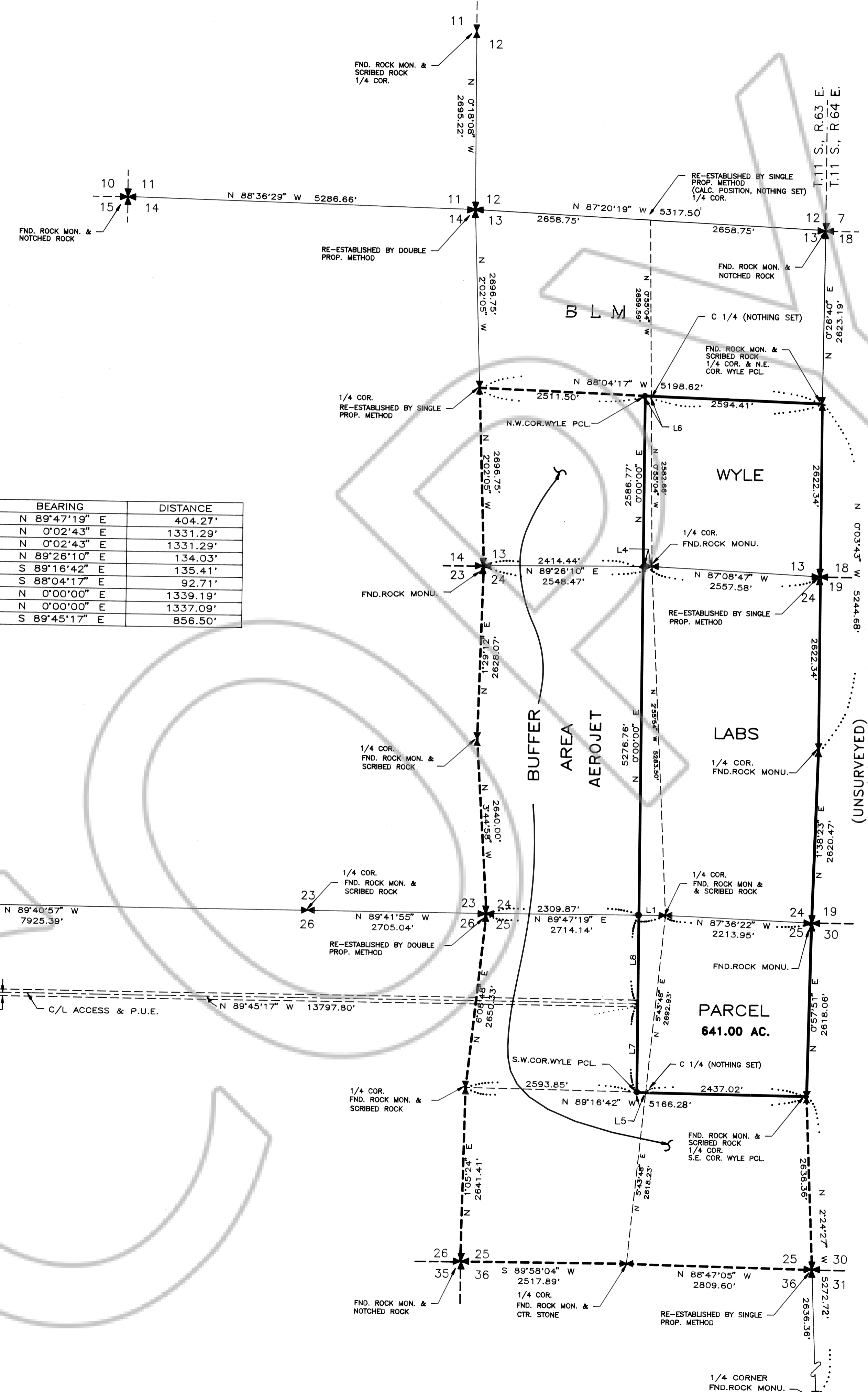


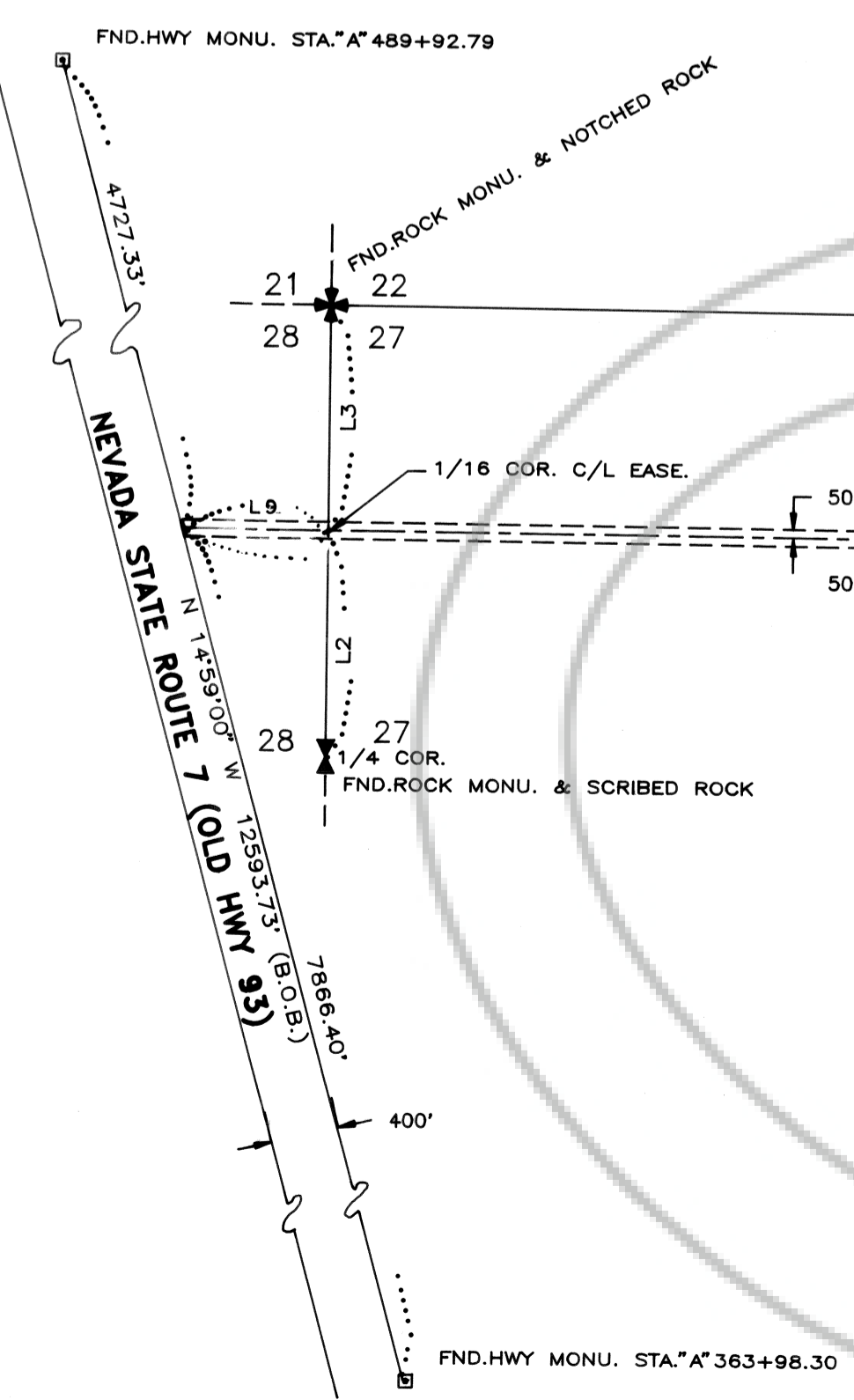
NORTH

Scale 1" = 1000'

RESOURCE CONCEPTS INC.
 340 North Minnesota Street, Carson City, Nevada 89701
 (702) 883 - 1600
ENGINEERING · SURVEYING
RESOURCE PLANNING



LINE	BEARING	DISTANCE
L1	N 89°47'19" E	404.27'
L2	N 0°02'43" E	1331.29'
L3	N 0°02'43" E	1331.29'
L4	N 89°26'10" E	134.03'
L5	S 89°16'42" E	135.41'
L6	S 88°04'17" E	92.71'
L7	N 0°00'00" E	1339.19'
L8	N 0°00'00" E	1337.09'
L9	S 89°45'17" E	856.50'



BASIS OF BEARING

THE EAST RIGHT OF WAY LINE OF NEVADA STATE ROUTE 7 PER N.D.O.T. R/W MAPS, SEC. A, F.L.P. NO. 6B. (N.14°59'00" W.)

NOTES:

1. ALL 1/4 COR. & SEC. COR. LOCATIONS SHOWN HEREON WERE PERPETUATED WITH A 5/8" REBAR & ALUMINUM CAP PLS NO. 3579 AND MARKED RESPECTIVELY UNLESS OTHERWISE NOTED.

LEGEND

- = SET 5/8" REBAR & ALUM. CAP PLS NO. 3579
- = 6" X 6" CONCRETE HWY MONU.

SURVEYOR'S CERTIFICATE

- I, BRUCE R. SCOTT, A PROFESSIONAL LAND SURVEYOR IN THE STATE OF NEVADA, CERTIFY THAT:
- THIS IS A TRUE AND ACCURATE REPRESENTATION OF THE LANDS SURVEYED UNDER MY SUPERVISION AT THE INSTANCE OF WYLE LABORATORIES, INC.
 - THE LANDS SURVEYED LIE WITHIN SECTIONS 13, 24 & 25 T. 11 S., R. 63 E., M.D.B.&M. AND THE SURVEY WAS COMPLETED ON JANUARY 18, 1991.
 - THIS PLAT COMPLIES WITH THE APPLICABLE STATE STATUTES AND ANY LOCAL ORDINANCES.
 - THE MONUMENTS ARE OF THE CHARACTER SHOWN AND OCCUPY THE POSITIONS INDICATED.

Bruce R. Scott
 BRUCE R. SCOTT, PROFESSIONAL LAND SURVEYOR NO. 3579
 2/11/91

RECORDER'S CERTIFICATE

FILED FOR RECORD THIS 22nd DAY OF February, 1991, AT 01 MINUTES PAST 1 O'CLOCK P.M., IN BOOK 11 PLAT, PAGE 334, OF THE OFFICIAL RECORDS OF LINCOLN COUNTY, NEVADA AT THE REQUEST OF WYLE LABORATORIES.

FILE NO. 95919
 FEE 10.00
 YURIKO SETZER
 RECORDER
Shonda Zher Deputy

RECORD OF SURVEY
 FOR
WYLE LABORATORIES
 WITHIN
 SECTIONS 13, 24, 25
 T.11 S., R.63 E., M.D.B.&M.
 LINCOLN COUNTY, NEVADA

