

T. Tomlinson

JANUARY 3, 1991

MCCROSKY BROTHERS PARCEL SALES (EAGLE VALLEY)

SW 1/4, SECT. # 35, T. 2 N., R. 69 E., M.D.B. & M

Buyers responsibility for access roadway maintenance,

1
2
3
4
5
6
7
8
9
10
11
12
13
14
15
16
17
18
19
20
21
22
23
24
25
26
27
28
29
30
31
32

Sellars agree to maintain access roads for a period of 1 year from the date of any parcel sale. Then it becomes the buyers responsibility to maintain his or her, their or theirs, percentage of access roads based on Parcels being serviced by the particular access road.

As the buyers buying frontage Parcels, they have the choice of having their own access road, or joining the access with the other buyers [adjoining the access right of way to their parcel]

"MAINTENANCE defined: road repairs for wear and tear, road repairs for washing from runoff, Does Not Include Snow Removal in winter, does not include blacktopping of the surface.

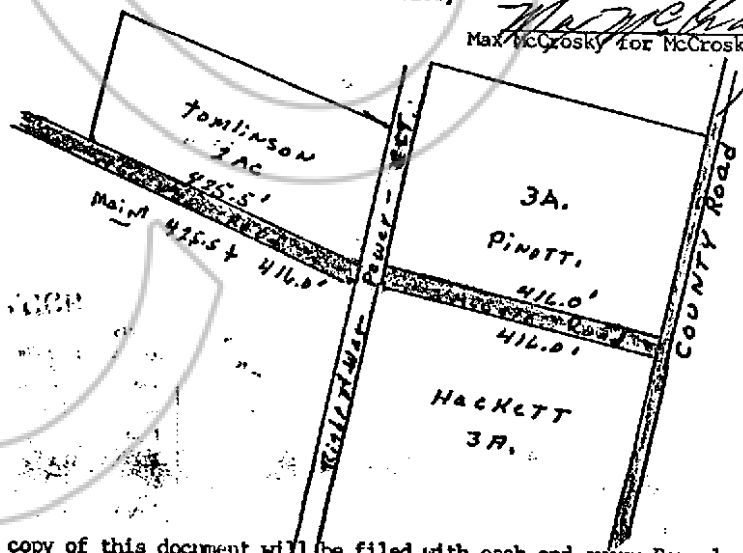
Access locations are defined on the Parcel Map filed with Lincoln County.

At the time all, or mostly all parcels are sold, the access roads can be turned over to the County. Then they become Public Access Roads, but will be maintained by the County as a county public access road. As most of the buyers do not want the access roads (Public Access) a decision by all buyers at that time will be made with majority ruling, to either place access roads with the County or to keep them as private access roads.

McCrosky Brothers assume no responsibility for said access roads after the time listed herein above, "for maintenance, or liability in any way".

PERCENTAGES OF MAINTENENCE: is figured by the number of Parcels using the access road to their parcel as follows," starting from the County Oiled Road, the first Parcels would be responsible for their share only to the top of their Parcel, Then the next Parcels would be responsible for the length of their Parcel plus their share of the first distance from the County Road, the next Parcels would be responsible for the length of their Parcel plus the distance of the previous two parcels to the County Road and so on to the most distance Parcels. Illustrated below,

Max McCrosky
Max McCrosky for McCrosky Brothers



A copy of this document will be filed with each and every Parcel sold.

COPY

095799

No.

FILED AND RECORDED AT THE REQUEST OF
Tonya Tomlinson

February 4, 1991

AT 55... OFFICIAL
... 94... OFFICIAL
... 348... LINCOLN
COUNTY, NEVADA.

YURIKO SETZER

COUNTY RECORDER

By *Spanda Zeller*
Deputy