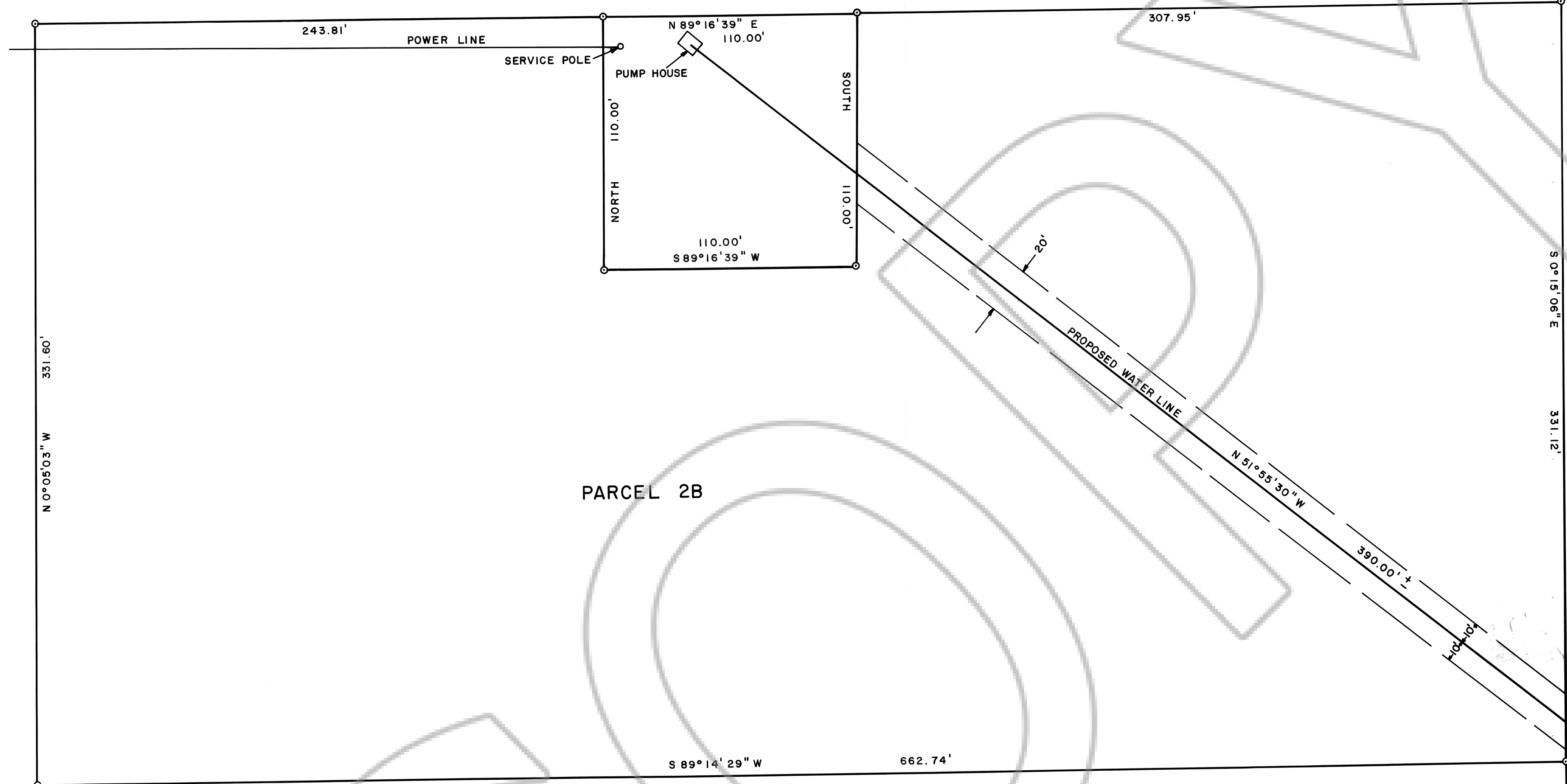


1/2 OF THE NE1/4 OF THE SE1/4 OF THE NE1/4,
SEC. 14, T1N, R67E, M.D.B. & M.

SURVEYOR'S CERTIFICATE

I, Frank C. Hulse, a duly Registered Land Surveyor in the State of Nevada, do hereby certify that this Record of Survey, consisting of one sheet correctly and accurately delineates a survey made by me at the request of Pioche Public Utilities. All monuments are of the character noted and occupy the positions shown hereon. This survey was completed the 25th day of March, 1989, and the survey conforms to the definitions and provisions of N.R.S. 278.010 thru 278.630 inclusive.

8/2/89
Frank C. Hulse
Frank C. Hulse, R.L.S. 6498



PARCEL 2B

PARCEL DESCRIPTIONS

Maintenance Area:

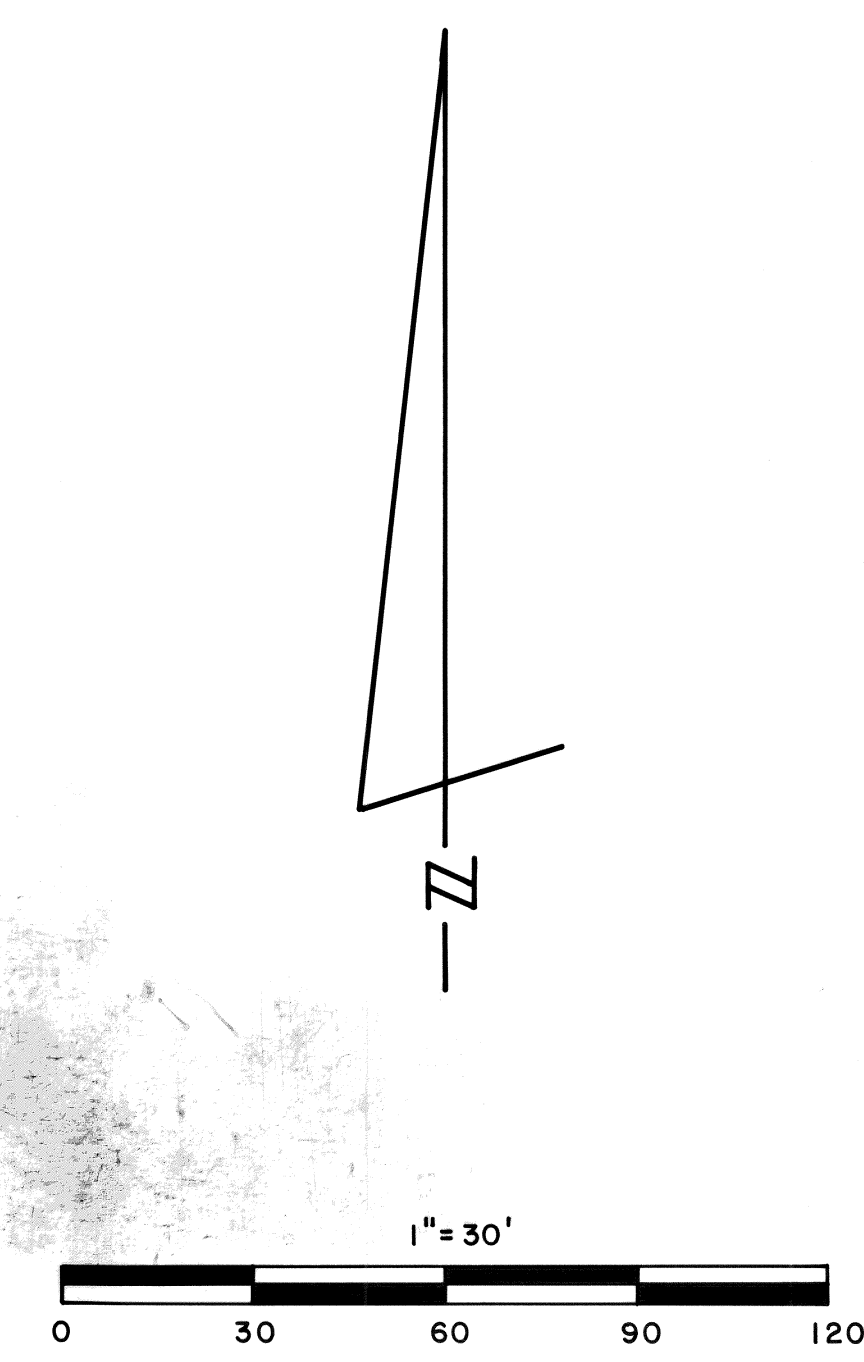
Beginning at the Northeast Corner of this parcel, from which the Northeast Corner of Parcel 2B bears N89°16'39"E a distance of 307.95 feet more or less; thence due South a distance of 110.00 feet more or less, to the Southeast Corner; thence S89°16'39"W a distance of 110.00 feet more or less, to the Southwest Corner; thence due North a distance of 110.00 feet more or less, to the Northwest Corner; thence N 89°16'39"E a distance of 110.00 feet more or less, to the Northeast Corner which is the point of beginning, containing .28 acres, more or less.

Pipeline Easement:

Beginning at a point from which the Northeast Corner of said Section 14 bears N0°15'06"W a distance of 1638.67 feet more or less; thence N51°55'30"W a distance of 397.70 feet more or less, to a point within the above described parcel; from which the Northeast Corner of said Section 14 bears N12°22'53"E a distance of 1426.57 feet more or less. Said pipeline easement is 20' in width, being 10' either side of described centerline, and contains .18 acres, more or less.

Total parcel and easement contain .46 acres, more or less.

CONCRETE MONUMENT
R.L.S. 3644
SEC. 14, T1N, R67E,
M.D.B. & M.



103206
103206
Pioche Public Utilities
March 20, 1989
P. 20
Plata 442
Yuriko Setzer
Deputy

RECORD OF SURVEY OF PARCEL AND EASEMENT WITHIN THE 1/2 OF THE NE1/4 OF THE SE1/4 OF THE NE1/4 OF SECTION 14, T1N, R67E, M.D.B. & M. PREPARED AT THE INSTANCE OF PIOCHE PUBLIC UTILITIES.

FRANK C. HULSE /s.f. JUNE 1989