

BN #62-#66, #75-#79
Lode Mining Claims

T 8 S, R 69 E, M.D.B.M.
Lincoln County, Nevada

Located by:

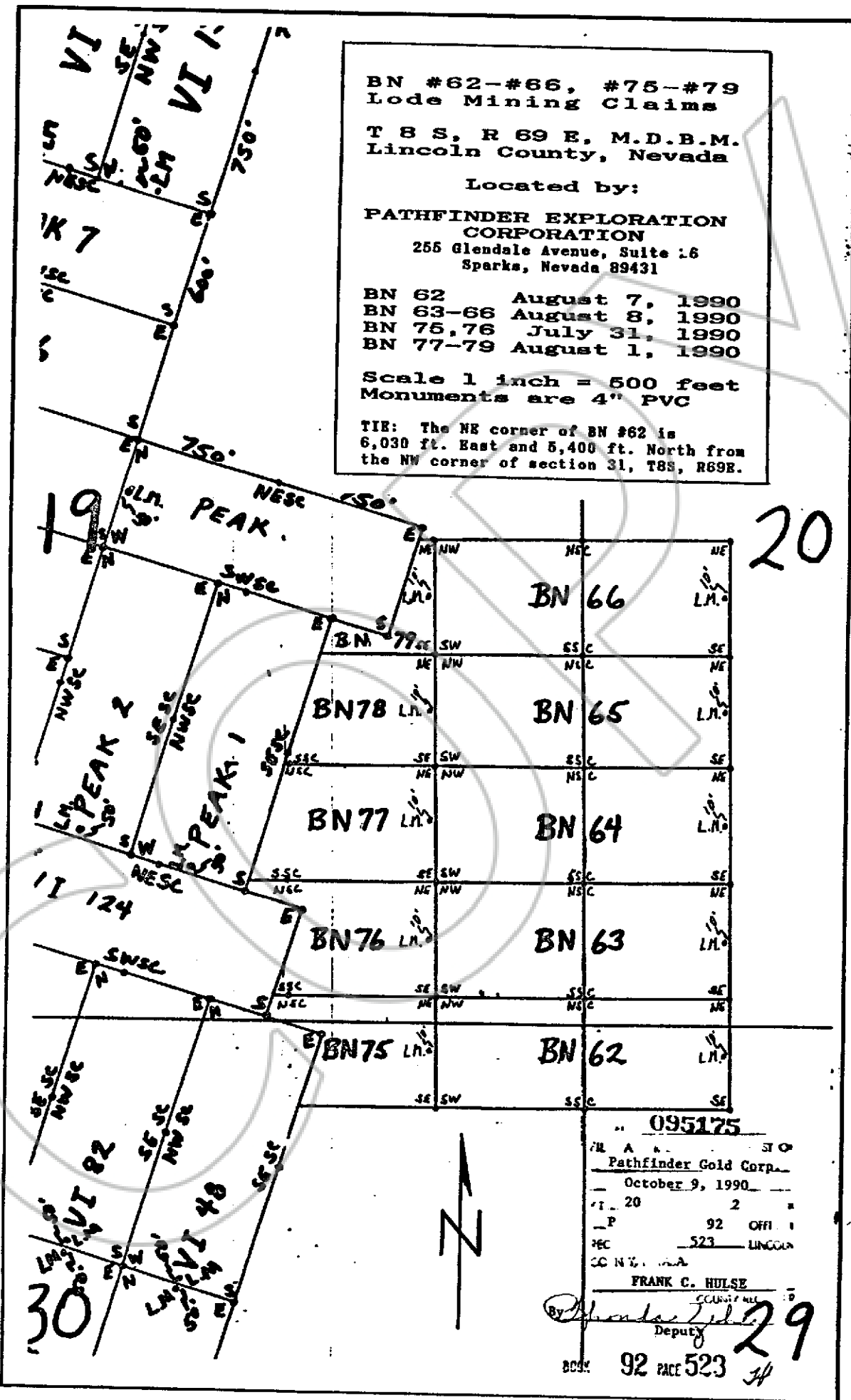
PATHFINDER EXPLORATION
CORPORATION

255 Glendale Avenue, Suite 16
Sparks, Nevada 89431

BN 62 August 7, 1990
BN 63-66 August 8, 1990
BN 75,76 July 31, 1990
BN 77-79 August 1, 1990

Scale 1 inch = 500 feet
Monuments are 4" PVC

TIB: The NE corner of BN #62 is
6,030 ft. East and 5,400 ft. North from
the NW corner of section 31, T8S, R69E.



20

30

095175

Pathfinder Gold Corp.
October 9, 1990
20 2
P 92 OFF. 1
PEC 523 LINCOLN
CC N.V. M.A.

FRANK C. HULSE

Deputy

Handwritten signature

Deputy

29