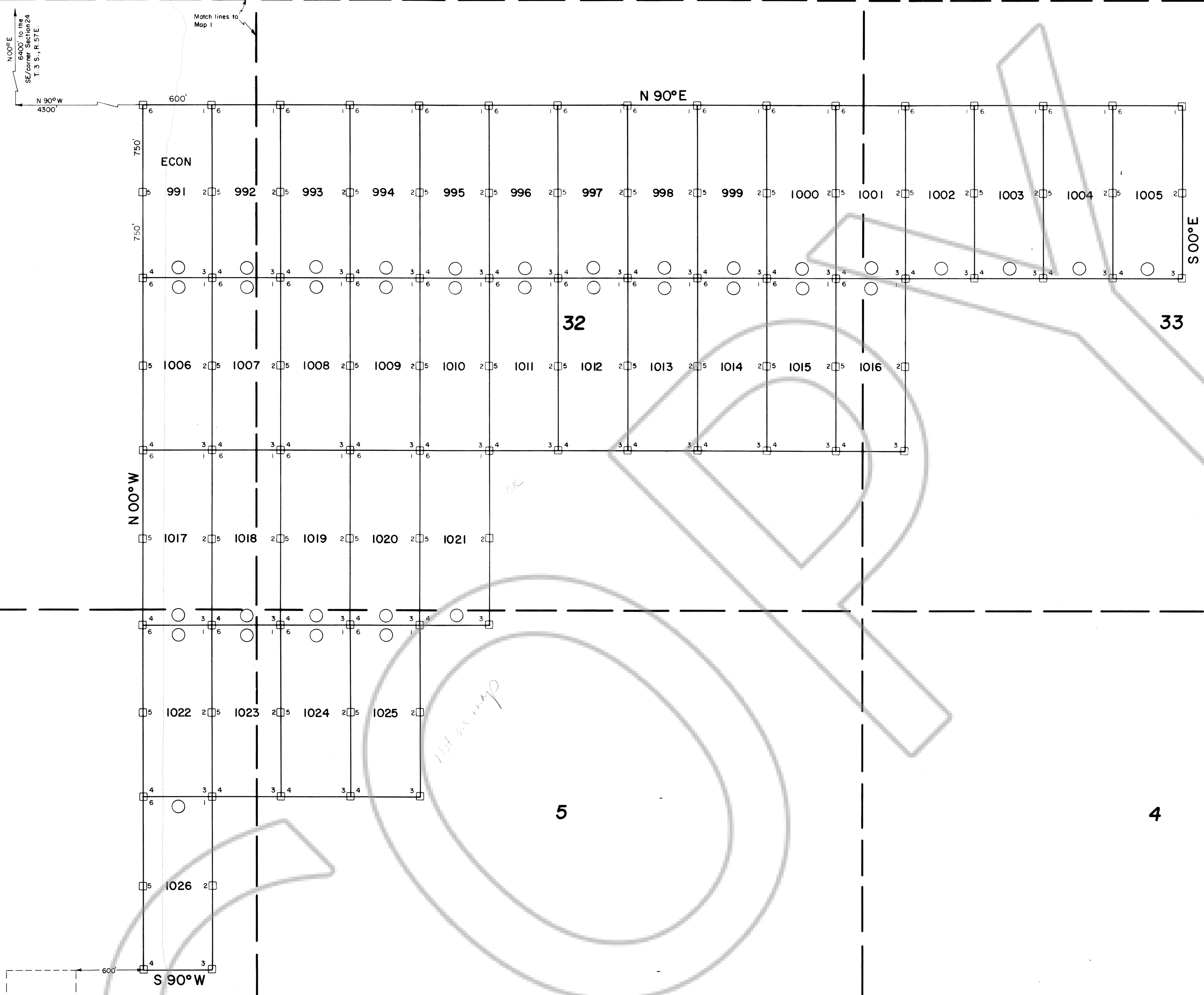


R. 58 E.



31

32

33

6

5

4

○ LOCATION MONUMENT
 ALL CLAIMS ARE 600' x 1500' UNLESS OTHERWISE NOTED.
 ALL LOCATION MONUMENTS ARE OFFSET 10' FROM END CENTERS UNLESS OTHERWISE NOTED.
 ALL LOCATION MONUMENTS, SIDE CENTERS AND CORNERS ARE MONUMENTED WITH 3" DIA. BY 5' W LENGTH PVC PIPE.
 BEARINGS SHOWN HEREON ARE TRUE BEARINGS.
 - - - PROTRACTED SECTION LINE

MAP
 OF
 LODE MINING CLAIMS
 WITHIN
 TOWNSHIPS 3 & 4 SOUTH, RANGES 57 & 58 EAST
 MOUNT DIABLO MERIDIAN
 LINCOLN COUNTY, NEVADA
 FOR
 ENVIRONMENTAL COMPANY OF NEVADA, L.P.
 P.O. BOX 10350
 RENO, NEVADA 89510

T. 3 S.
T. 4 S.

095120
 FILED IN RECORDS OF COUNTY CLERK
 Environmental Co. of N.V.
 1st day of Oct. 1990
 15
 92 OFFICE
 REC 468 LINCOLN
 CO. N.V., NEVADA
James C. Schulte
 COUNTY CLERK

ECON CLAIMS 171-200, 991-1050
 LOCATED - AUGUST 22-24, 1990

