

23

24

R. 57 E. | R. 58 E.

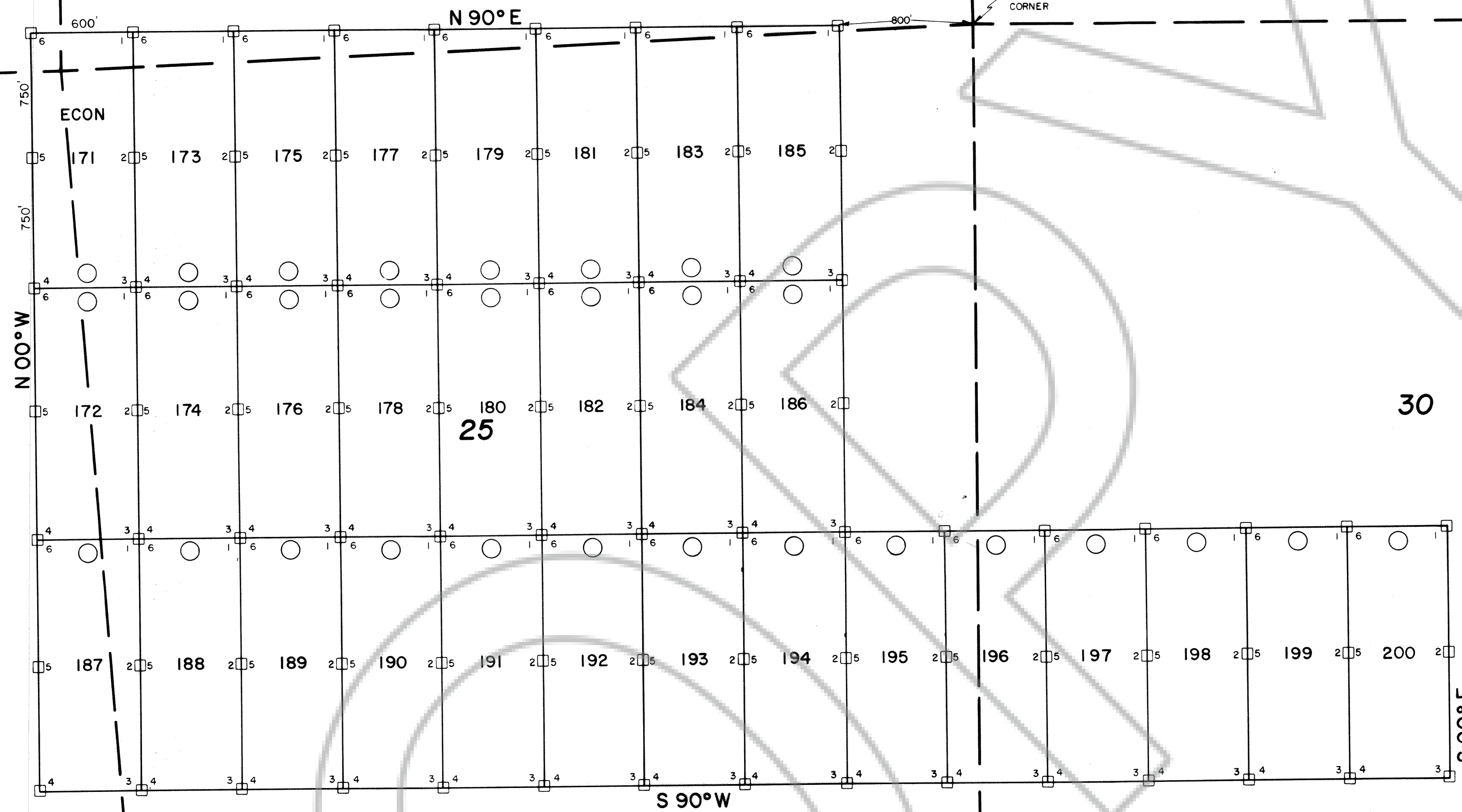
26

25

30

T.  
3  
S.

31



○ = LOCATION MONUMENT  
 ALL CLAIMS ARE 600' x 1500' UNLESS OTHERWISE NOTED.  
 ALL LOCATION MONUMENTS ARE OFFSET 10' FROM END CENTERS UNLESS OTHERWISE NOTED.  
 ALL LOCATION MONUMENTS, SIDE CENTERS AND CORNERS ARE MONUMENTED WITH 3" DIA. BY 5' IN LENGTH PVC PIPE.  
 BEARINGS SHOWN HEREON ARE TRUE BEARINGS.  
 - - - = PROTRACTED SECTION LINE

**MAP**  
 OF  
 LODE MINING CLAIMS  
 WITHIN  
 TOWNSHIPS 3 & 4 SOUTH, RANGES 57 & 58 EAST  
 MOUNT DIABLO MERIDIAN  
 LINCOLN COUNTY, NEVADA  
 FOR  
 ENVIRONMENTAL COMPANY OF NEVADA, L.P.  
 P.O. BOX 10350  
 RENO, NEVADA 89510

095119  
 RECORDED 37 OF  
 Environmental Co. of N.V.  
 1st day of Oct. 1990  
 15  
 92 OFFICE  
 467  
*Frank Hall*  
 COUNTY REC. CLERK

ECON CLAIMS 171-200, 991-1050  
 LOCATED - AUGUST 22-24, 1990

BOOK 92 PAGE 467

