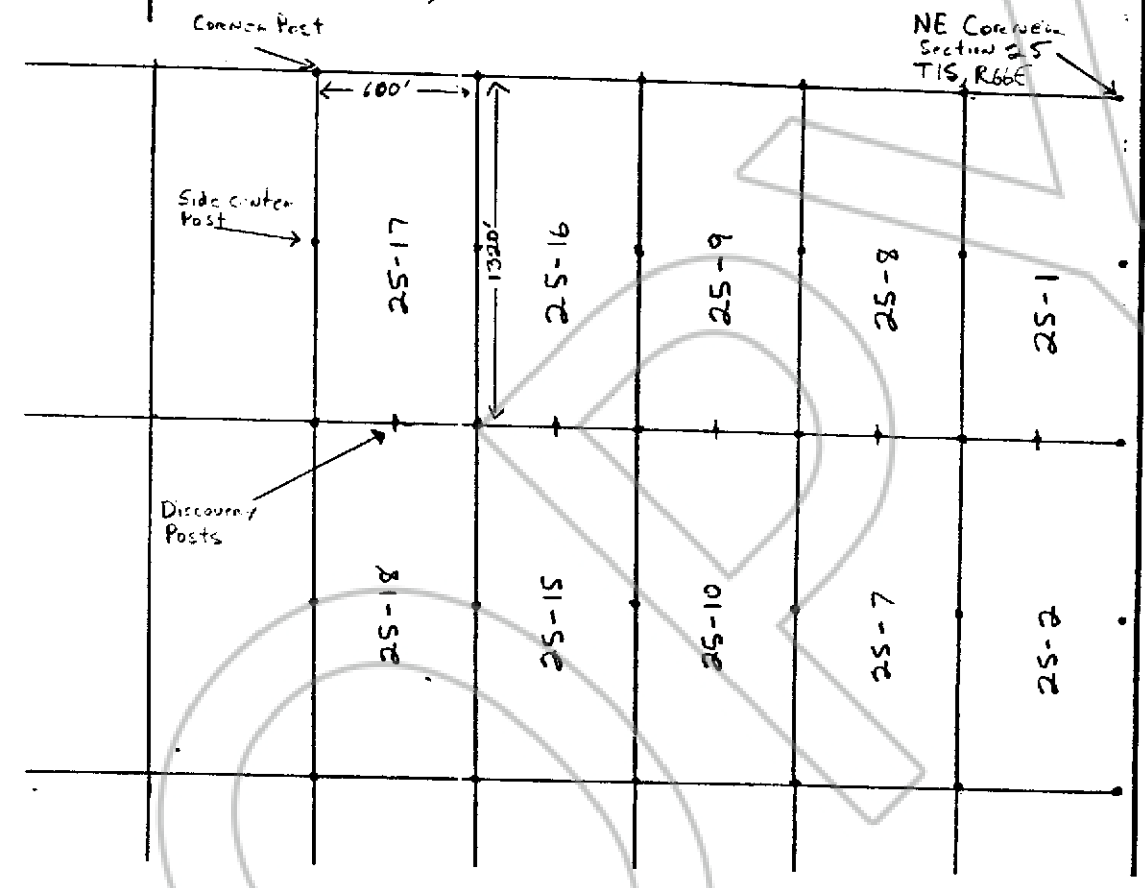


Bennet Pass Lode Claims

Scale 1" = 500'

Section 25, T1S, R66E Mt. Diablo Meridian
Lincoln County, Nevada



No. **094665**

Filed and Recorded at the request of
PETE LIEN & SONS, INC., this 26th day
July, 1990, at 15 minutes past 2 o'clock
P.M., in Book 91 of Official Records
Page 518 Lincoln County, Nevada.

Frank C. Hulse
FRANK C. HULSE - County Recorder

Prepared 7/26/90
Steve Monell
Steve Monell

SE Corner of
Section 25,
T1S, R66E
Mt. Diablo Meridian