

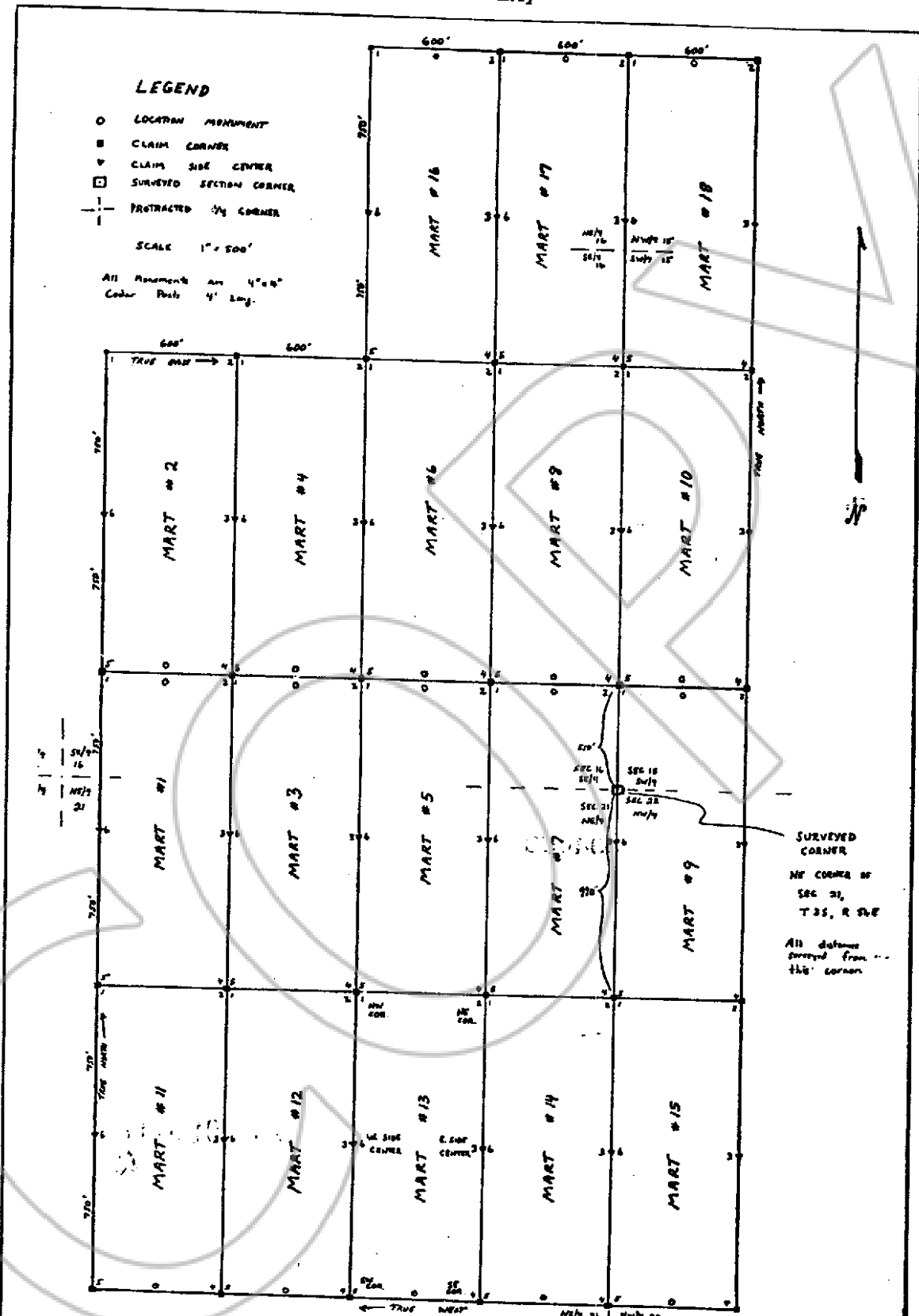
Lincoln County

LEGEND

- LOCATION MONUMENT
- CLAIM CORNER
- ▽ CLAIM SIDE CENTER
- SURVEYED SECTION CORNER
- ⊕ PROTRACTED 90° CORNER

SCALE 1" = 500'

All monuments are 4" x 4" Cedar Posts 4' Long.



MART LODE CLAIMS
LOCATED 5/30 - 6/1/90


SECTIONS 15, 16, 21, 22, T 35 R 56 E M.D.M.
LINCOLN COUNTY, NEVADA

JAMES E. LUMBCK
1993 South TENTH EAST
SHEPHERD CITY, UTAH
84105

COPIES

NO. 094453

Filed and Recorded at the request of
JAMES E. LUNBECK this 27th day of
June, 1990, at 15 minutes past 12
O'clock P.M., in Book 91 of
Official Records, Page 173
Lincoln County, Nevada.


FRANK C. HULSE - County Recorder

