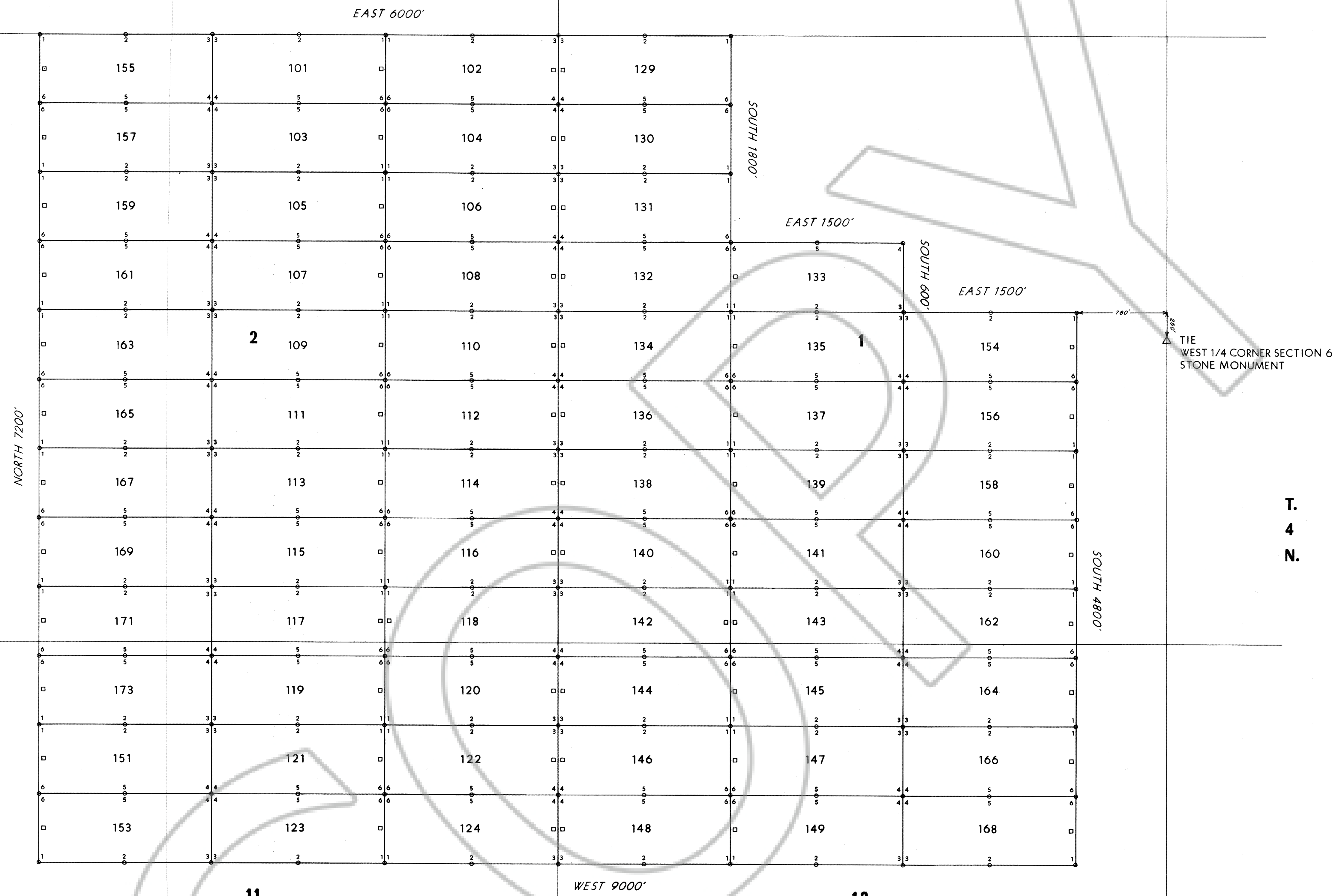
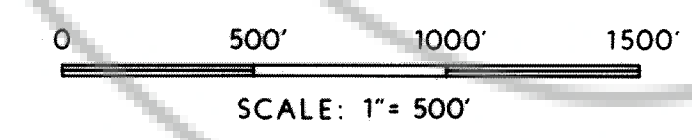


R. 58 E.



T. 4 N.

Note: All section lines are projected



All claims 600' x 1500'
 Discovery monuments 20' in from end centers
 Corners, side centers and discovery monuments marked with 3" dia. PVC pipe and aluminum tags denoting appropriate corners

EXPLANATION

CLAIMS	DATE LOCATED	CLAIMS	DATE LOCATED
C.I.M. 102 thru 136	May 9, 1990	C.I.M. 101 thru 123	May 13, 1990
C.I.M. 113 thru 148	May 10, 1990	C.I.M. 155 thru 165	May 16, 1990
C.I.M. 133 thru 149	May 11, 1990	C.I.M. 167 thru 153	May 17, 1990
C.I.M. 154 thru 168	May 12, 1990		

These claims are located by Freelance Geology Inc.
 An agent for BHP-Utah International Inc.

094205
 FILE A RECORD OF DEED
 BHP International
 6 June 1990
 AT 15 5 4
 R 90 OFF
 RECD LINCOLN
 CO. NV., LINCOLN COUNTY REC. DEPT.

BHP-UTAH International Inc
 WESTERN U.S. EXPLORATION

Map Title: C.I.M. Unpatented Lode Claims
 Project/Property: Logan Pass
 District: Pahrangat Date By: F.L.G. Inc.
 County: Lincoln Drafted By: C. Williams
 State: Nevada
 Scale: 1"=500'
 Contour Interval: Revised By:
 Reference:

BOOK 90 PAGE 586
 Xyo County