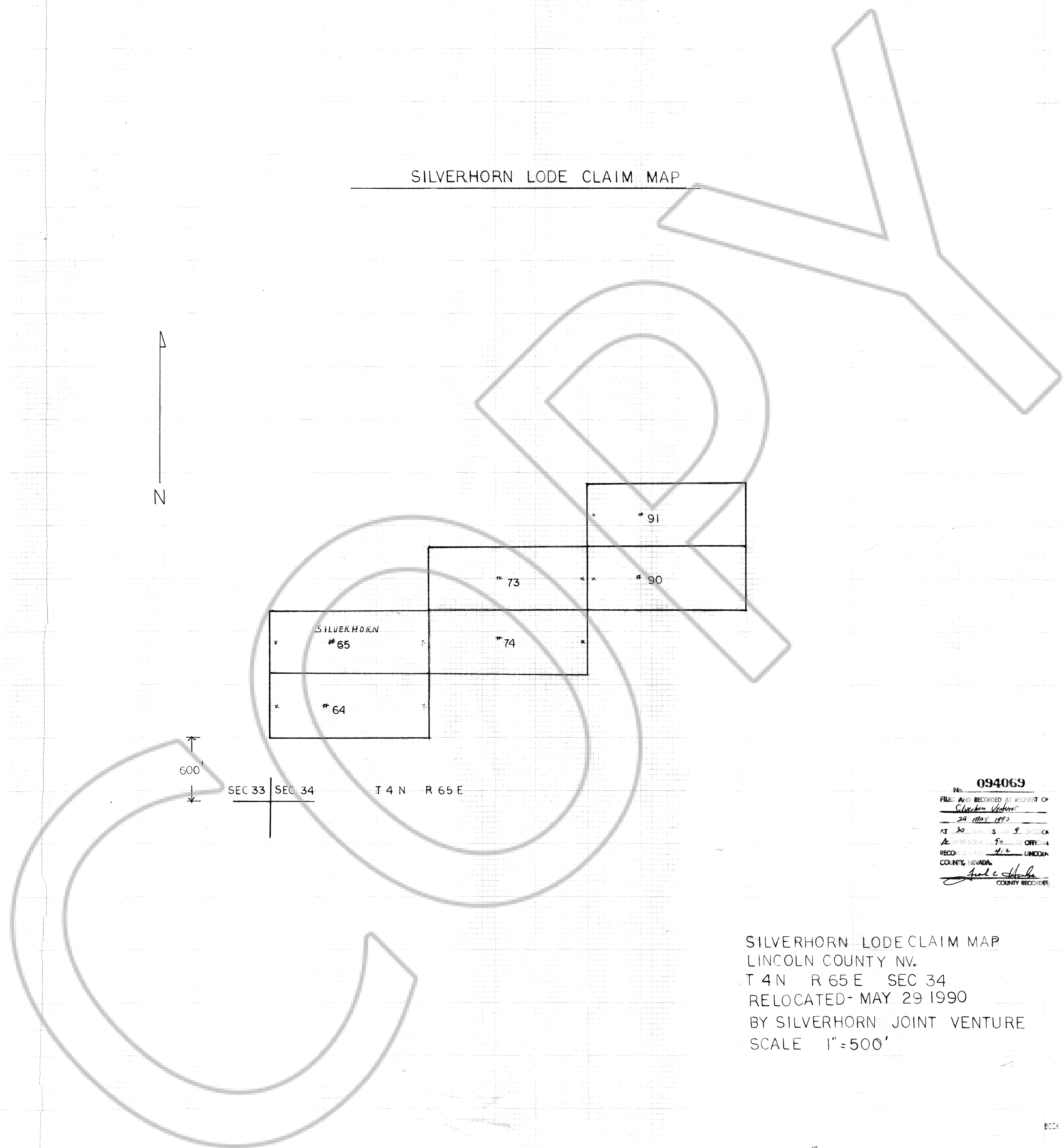


SILVERHORN LODE CLAIM MAP



NO. 094069
FILED AND RECORDED AT REQUEST OF
Silverhorn Ventures
29 May 1990
AT 30 MINUTES TO 9 O'CLOCK
A.M. BOOK 90 OFFICE
RECORDS DEPT. LINCOLN
COUNTY, NEVADA
Paul C. Hulse
COUNTY RECORDER

SILVERHORN LODE CLAIM MAP
LINCOLN COUNTY NV.
T 4 N R 65 E SEC 34
RELOCATED- MAY 29 1990
BY SILVERHORN JOINT VENTURE
SCALE 1"=500'