

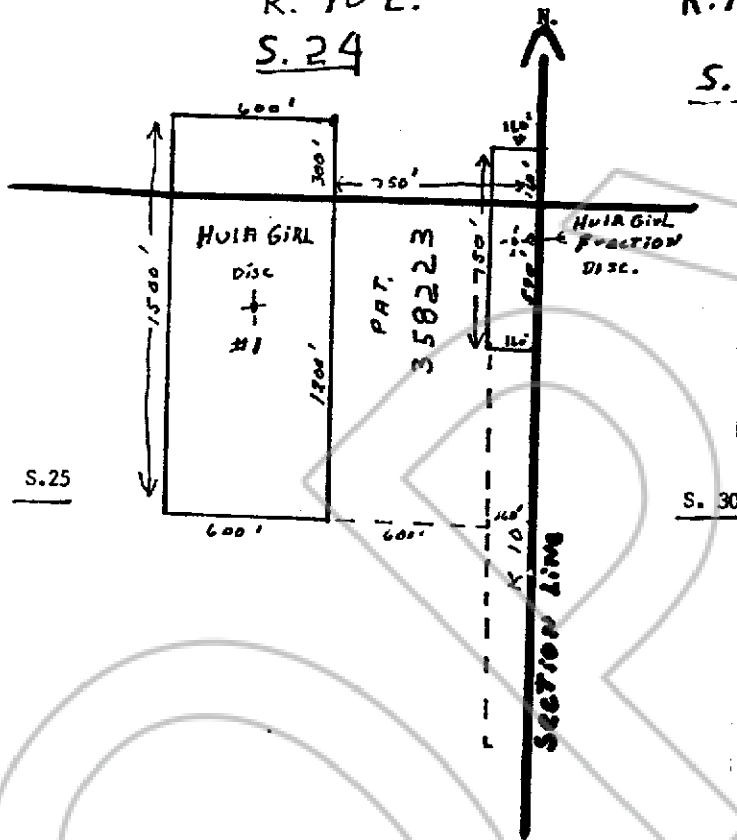
T. 1. N.

R. 70 E.

R. 71 E.

S. 24

S. 19



HULA GIRL # 1 - from sect cor 24-25-19-30- 750 ft west, thence 300 ft north to the N.E. corner.

HULA GIRL FRACTION - from Sect Cor. 24-25-19-30- 160 feet North to the N.E. corner.  
one inch = 500 feet

Describe here the position of the Claim Location Monument, if one is used.

HULA GIRL # 1-750 ft. south, thence 300 feet West from the N.E. corner

HULA GIRL Fraction- 400 Ft. South, thence 80 feet West from the N.E. corner.

Map of the HULA GIRL Mining Claim Group.

in Section 24 & 25 Township, 1 No. Range 70 East

in the DEER LODGE Mining District,

LINCOLN County, Nevada.

Located on the 26 th day of MARCH, 1990, by

LAVAR HOLLINGSHEAD PLOCHE NEVADA 89043

Locator name and address (please print)

MAX McCROSKY SR# 74 box 172 Ploche Nev. 89043

RECORDER'S STAMP

093589

FILE AND RECORDED AT THE OFFICE OF  
Shirley McCrosky  
March 28, 1990

AT 15 s 10 T 1 R 70 E  
89 OFFICE  
RECORDED 518 LINCOLN  
COUNTY, NEVADA

FRANK C. HULSE

COUNTY RECORDER

By Shirley McCrosky, Deputy