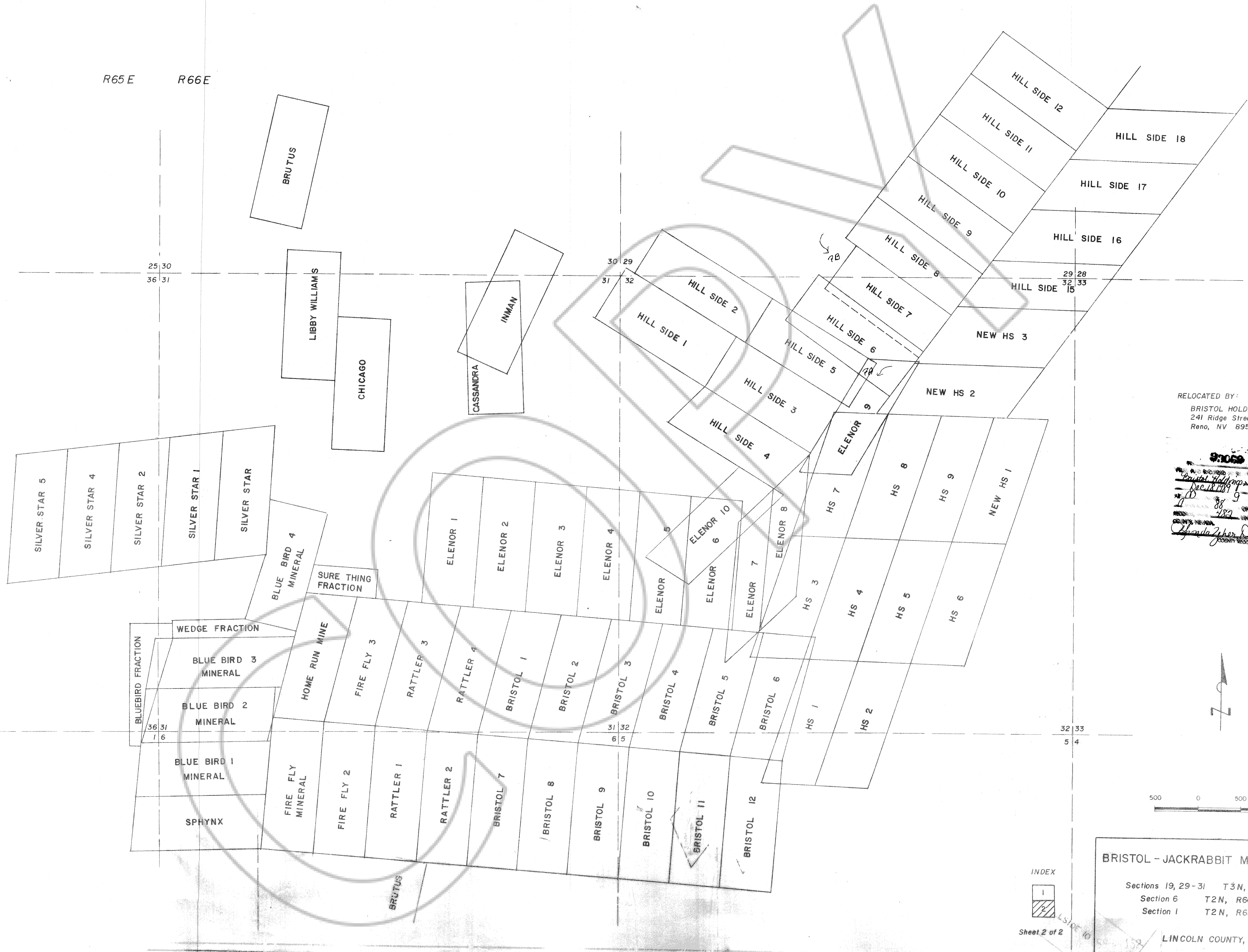


R65 E R66 E

T3 N
T2 N

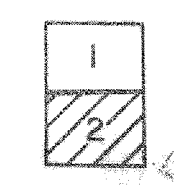


RELOCATED BY:
 BRISTOL HOLDINGS, INC
 241 Ridge Street, 4th Floor
 Reno, NV 89501

RECORDED
 Bristol Holdings, Inc
 Dec 18 1989
 1089 OFFICIAL
 COUNTY, NEVADA
 COUNTY RECORDER



INDEX



Sheet 2 of 2

BRISTOL - JACKRABBIT MINING DISTRICTS

Sections 19, 29-31 T3N, R66E M.D.M.
 Section 6 T2N, R66E M.D.M.
 Section 1 T2N, R65E M.D.M.

LINCOLN COUNTY, NEVADA

R 65E

R 66E

BRISTOL - JACKRABBIT MINING DISTRICTS

Sections 19, 29-31 T 3N, R66E M. D. M.
Section 6 T 2N, R66E M. D. M.
Section 1 T 2N, R65E M. D. M.

LINCOLN COUNTY, NEVADA

INDEX

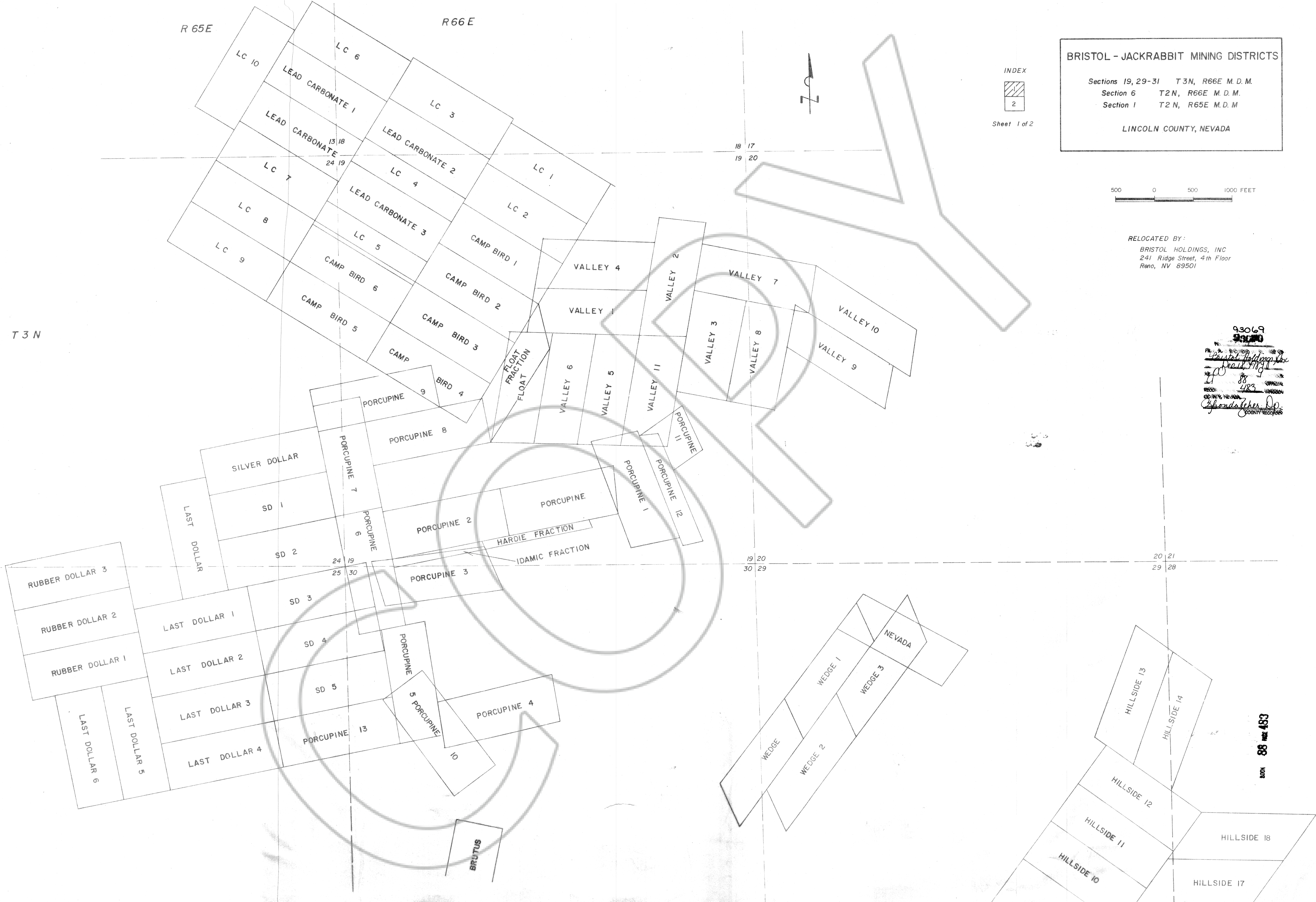


Sheet 1 of 2

500 0 500 1000 FEET

RELOCATED BY:
BRISTOL HOLDINGS, INC
241 Ridge Street, 4th Floor
Reno, NV 89501

T 3 N



93069
93070
Bristol Holdings, Inc
Dec 11, 1979
40 88
COUNTY RECORDER
Lincoln County, Nevada

BOOK 88 PAGE 483