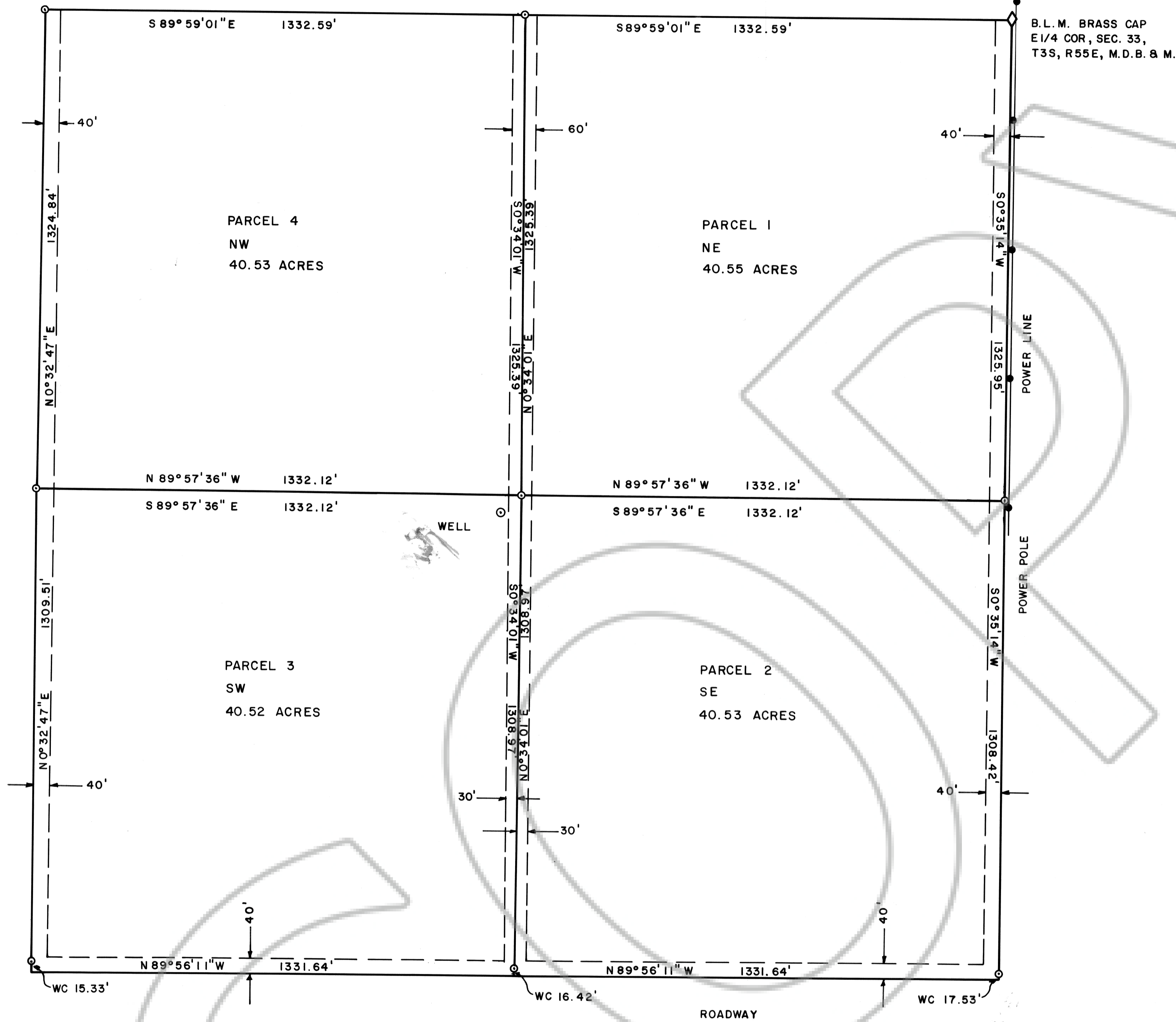


A DIVISION OF LAND INTO LARGE PARCELS
SE 1/4, SECTION 33, T3S, R55E, M.D.B. & M.

SURVEYOR'S CERTIFICATE

Frank C. Hulse states that he is a Registered Land Surveyor and Lincoln County Surveyor in the State of Nevada, that this Map of a Division of Land into Large Parcels consisting of one sheet accurately and completely delineates a survey made under his direct supervision and completed on February 25th, 1989. That it has been prepared at the instance of D.C. and Faye Day, owners. All monuments are of the character and occupy the positions shown, and are sufficient to enable the survey to be retraced. That this survey conforms with the definitions and provisions of the Nevada Revised Statutes 278.472 to 278.4725 inclusive.

Frank C. Hulse
Frank C. Hulse, Nevada No. 6498
Registered Land Surveyor



OWNER'S CERTIFICATE

We, D.C. and Faye Day, do hereby certify that we are the owners of the land shown hereon, that we consent to the preparation and recordation of this Map of a Division of Land into Large Parcels and that it conforms to the provisions on Nevada Revised Statutes 278.472 to 278.4725 inclusive. We also offer for Dedication the roads and multiple use easements as shown hereon for public usage by Lincoln County, it's heirs and assigns and the various utility companies as necessary.

D.C. Day
Faye Day
Owners

ACKNOWLEDGEMENT

STATE OF NEVADA
COUNTY OF LINCOLN ss

On this 23 day of MARCH, 1989, D.C. and Faye Day appeared before me, a Notary Public, and they acknowledged to me that they executed the above instrument.

Maria L. Corrie
Notary Public

My appointment expires 8-22-92

APPROVALS

This is to certify that the Director of Zoning and Comprehensive Planning, Lincoln County, Nevada, on this 10th day of August, 1989, did approve for purposes of land division and accept in behalf of the public this map and any parcels of land offered for dedication for public use in conformity with the terms of the offer of dedication per N.R.S. 278.010 thru 278.630.

Stacy Walker
Director

- LEGEND —
- SET 5/8" REBAR
- WC WITNESS CORNER

APPROVALS

Approved this 21st day of August, 1989, by the Lincoln County Commissioners as a Map of a Division of Land into Large Parcels.

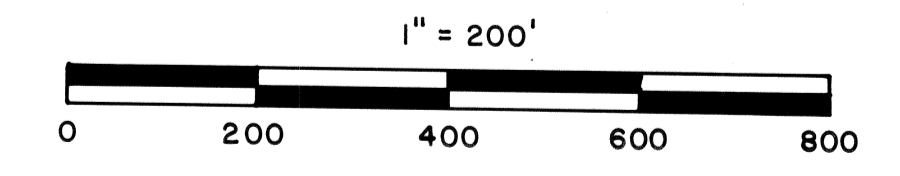
Kathy L. Hulse
Chairman

Attest: *Corrie Walker*
Clerk

92078
FILED AND RECORDED AT REQUEST OF
Faye Day
August 24, 1989
AT 4:50 PM '89
BY *FRANK C. HULSE*
COUNTY CLERK
PLAT "A"
PAGE 304
By *Kyonda J. Gher*, Deputy

BASIS OF BEARING: SOLAR OBSERVATION

BOOK 86 PAGE 545



FINAL MAP OF A DIVISION OF LAND INTO LARGE PARCELS, SE 1/4, SECTION 33, T3S, R55E, M.D.B. & M. PREPARED AT THE INSTANCE OF D.C. AND FAYE DAY.

FRANK C. HULSE/s f MARCH 1989