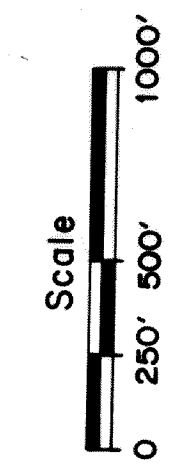
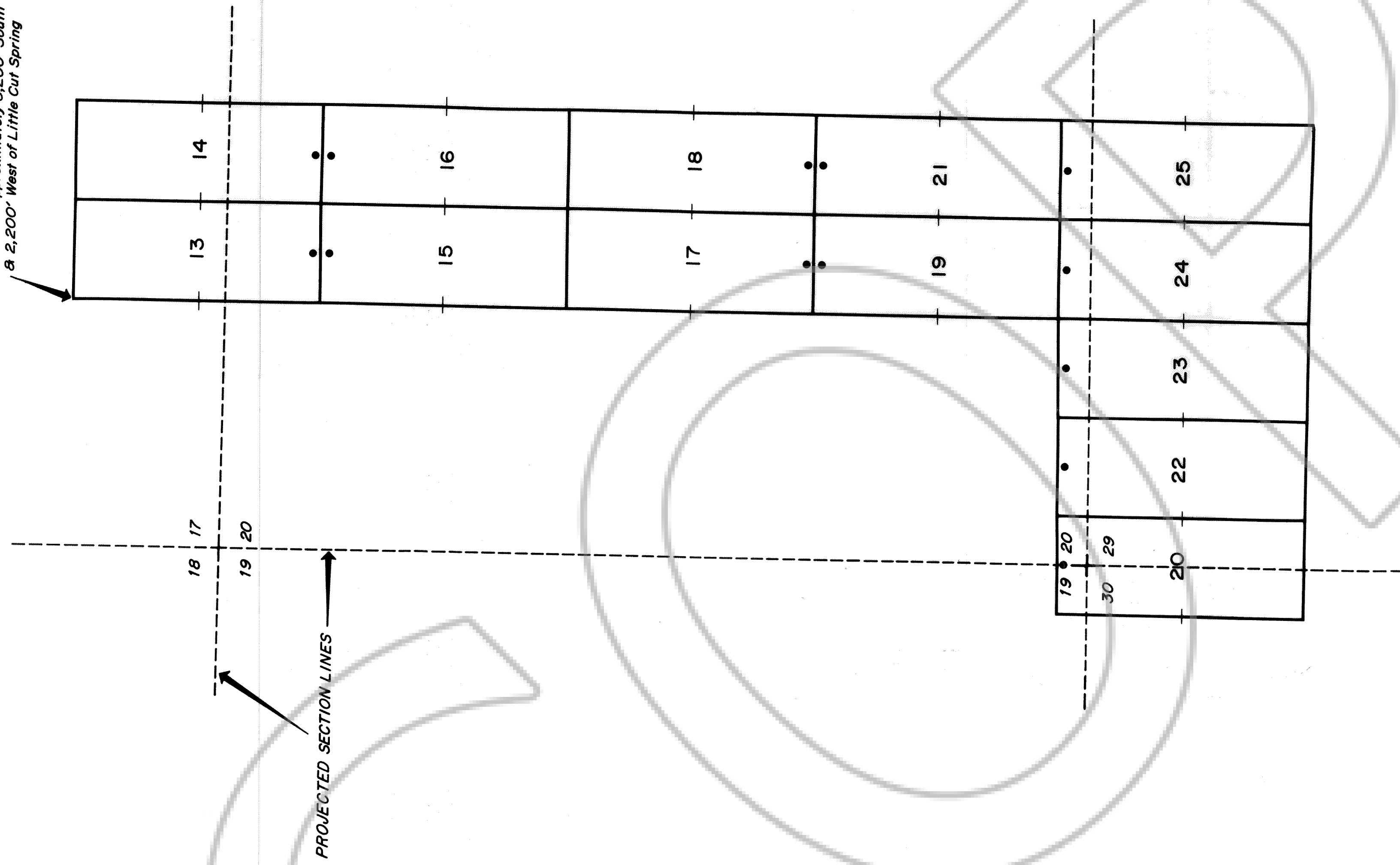
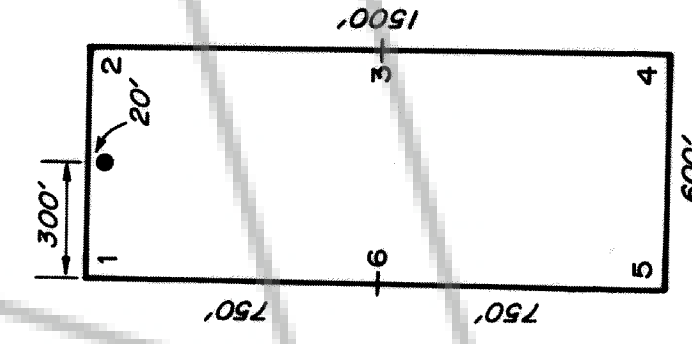


Corner is approximately 5,200' South & 2,200' West of Little Cut Spring



92051
FILED AND RECORDED AT REQUEST OF
ECM, Inc.
August 18, 1989
Page 30 of 30
Book 86 of Official
Records Page 512 LINCOLN
COUNTY, NEVADA
FRANK C. HULSE
COUNTY RECORDER
Mara Conner / Deputy

BOOK 86 PAGE 512



TYPICAL CLAIMS
All claims are 1500'x600'

- EXPLANATION
- Location monument - 20' inside End Line
 - Claim Boundary

SOUTH PAW CLAIMS
13-25
Unsurveyed T3S-R59E
LINCOLN COUNTY, NEVADA

WITNESS CORNER
S.E. corner South Paw #18 witnessed 298' West

Located by: ECM, Inc.