

SEC. 35

SEC. 36

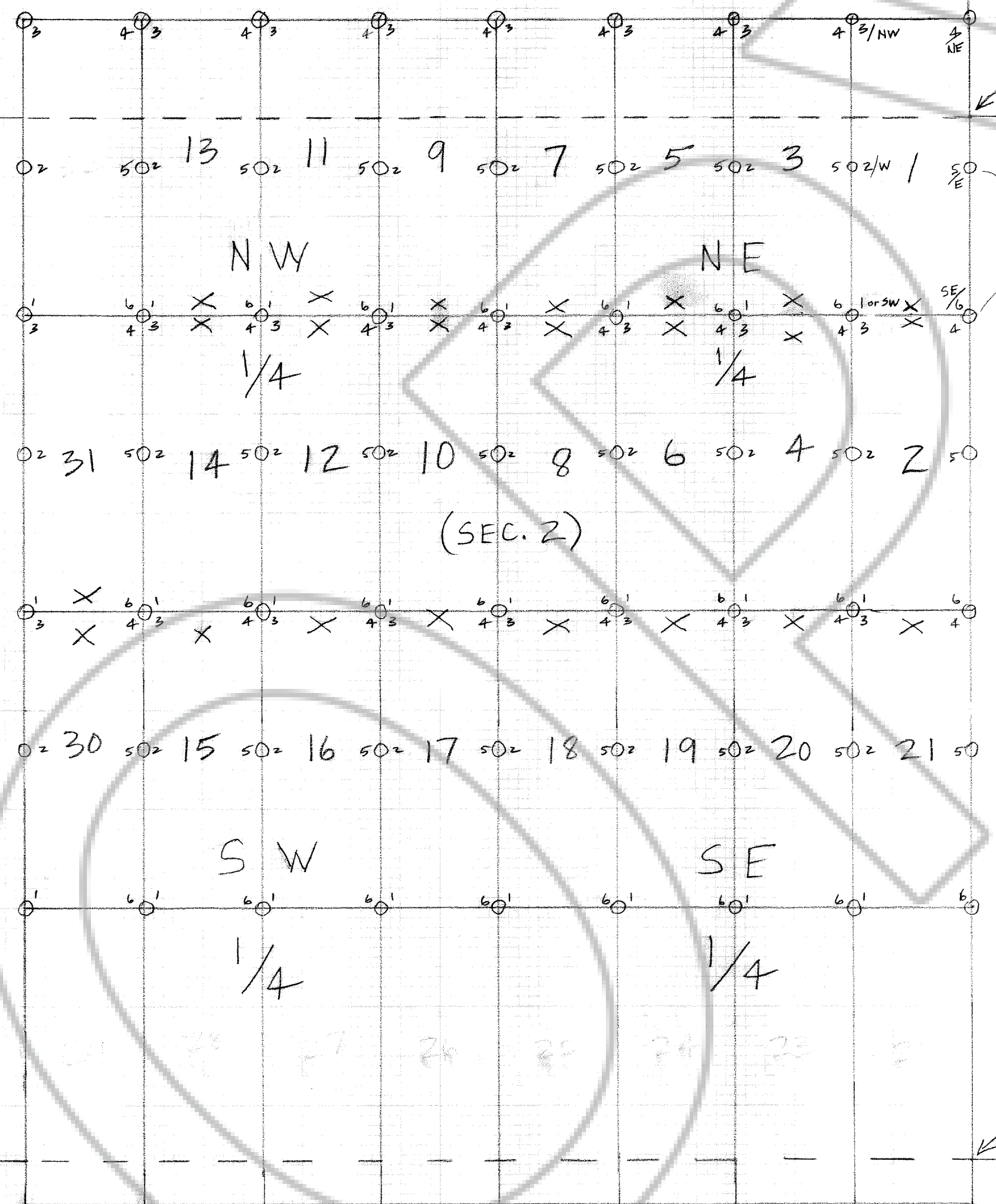
R 70 E

T6S  
T7S

T6S  
T7S

SECTION CORNER

SECTION CORNER  
35 | 36  
2 | 1



ALL BOUNDARY MONUMENTS ARE MARKED BY CEDAR POST FLAGGED WITH ORANGE OR RED SURVEYORS TAPE AND WITH IDENTIFICATION MAP AFFIXED TO POST IN PLASTIC BAG. BOUNDARY MONUMENTS ARE IDENTIFIED BY DIRECTIONAL REFERENCES SUCH AS :

SW CORNER NO. 1
SE " " 3
NW " " 2
NE " " 4

SEC. 1

R 70 E

SECTION CORNER

SECTION CORNER

SEC. 11

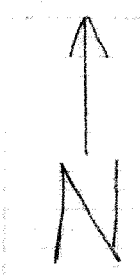
SEC. 12

91927  
 FILED AND RECORDED AT THE OFFICE OF  
 CLERK & COUNTY RECORDER  
 3 August 1989  
 AT 15 84 U  
 RECORDS FILE 321 LINCOLN  
 COUNTY, NEVADA  
 J. L. Huber  
 COUNTY RECORDER

R 70 E

X = LOCATION MONUMENTS  
O = BOUNDARY "

SCALE: 1" = 500'



MAP OF GOSAN GROUP OF LOBE CLAIMS  
 R 70 E, T6S and T7S  
 MT. DIABLO BASE & MERIDIAN, LINCOLN CO., NEVADA