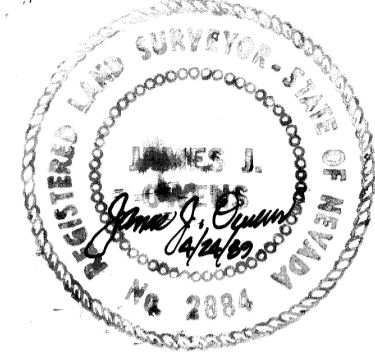


SURVEYOR'S CERTIFICATE

I, James J. Owens, a duly registered Land Surveyor in the state of Nevada, as agent for The Owens Surveying Outfit, do hereby certify that this Record of Survey, consisting of one sheet, accurately and completely delineates a survey made by me or under my direct supervision, at the instance of Stan T. Gaffin, all monuments are of the character and occupy the positions shown and are sufficient to enable the survey to be retraced; this survey conforms with the definitions and provisions of the Nevada Revised Statutes 278.010 to 278.630, inclusive. This survey was completed on April 19, 1989.



James J. Owens
Registered Land Surveyor
Nevada Certificate No. 2884

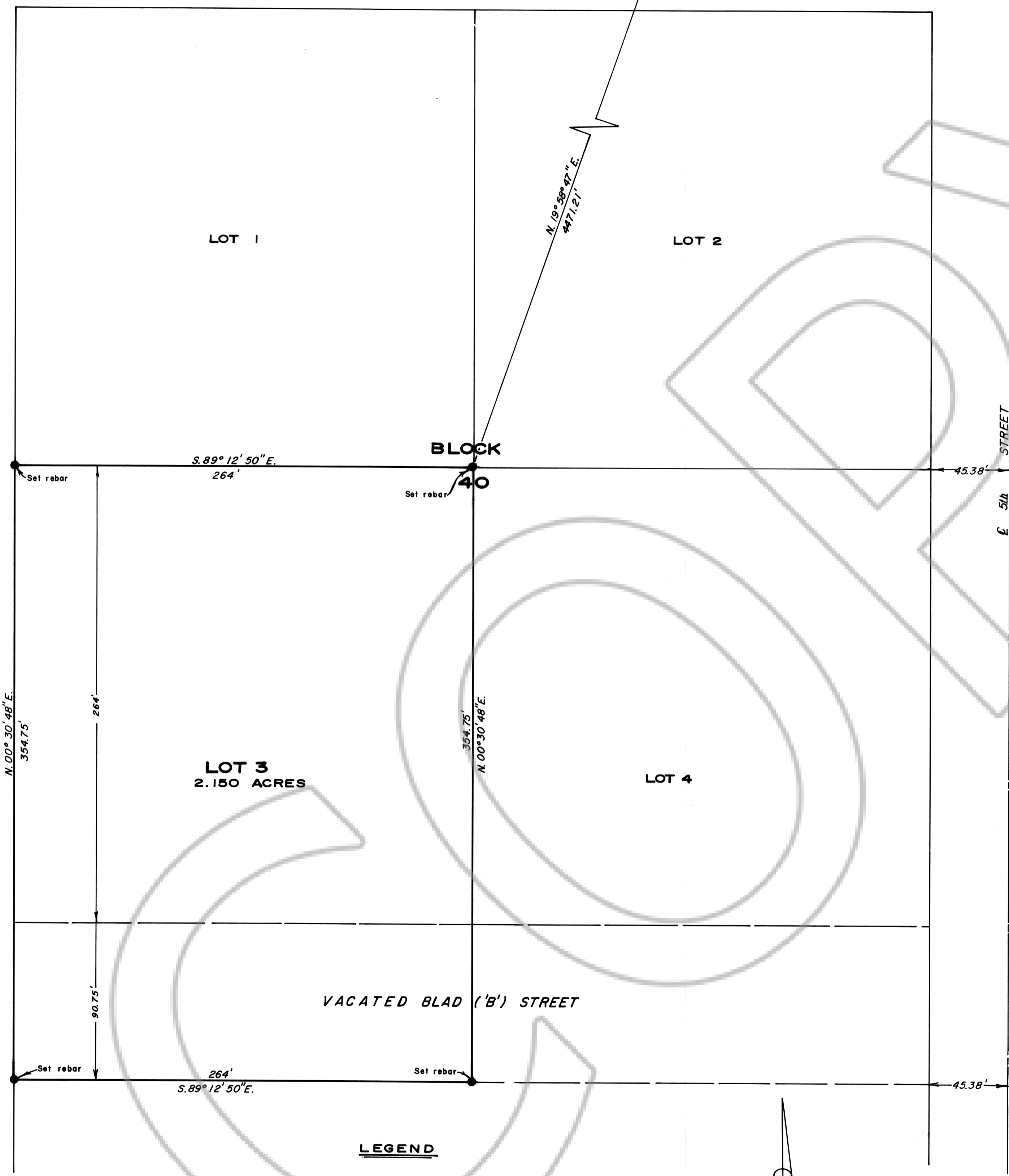
BASIS OF BEARINGS

The basis of bearings is the Panaca Grid Coordinate System established by Frank C. Hulse, R.L.S. 6498, by solar observation from the northwest corner of section 4 to the north quarter corner of section 4, Township 2 South, Range 68 East, Mount Diablo Base and Meridian, with a bearing of N. 89° 45' 15" E.

REFERENCE DOCUMENTS

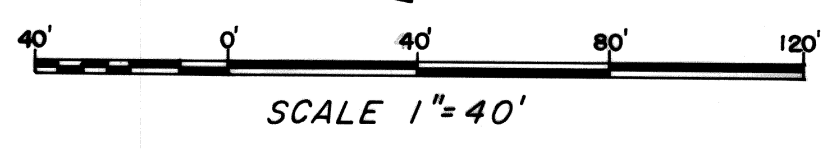
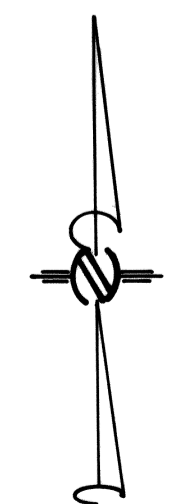
1- Map of Panaca City by Frank Walker, County Surveyor, dated March 6, 1922.

VACATED 4th STREET



LEGEND

- Set 3/4" rebar with cap marked RLS 2884
- ⊠ Quarter Corner
- ⊕ Section Corner



C. H. Griffith 4/24/89

RECORD OF SURVEY

FOR
STAN T. GAFFIN

SHOWING
Lot No. 3, Block 40 and that portion of vacated Blad ('B') Street,
Panaca City, Lincoln County, Nevada

No. 91230
Filed at the request of
STANLEY J. GAFFIN
Date MAY 16 1989 AT 10:55 A.M.
File PLA A Page 301
of Survey Maps



THE OWENS SURVEYING OUTFIT
Project Mineral, Land Surveying throughout the west

P.O. Box 1330
Mesquite, Nevada 89024

Official Records Book No. PLA A

Frank C. Hulse, Recorder