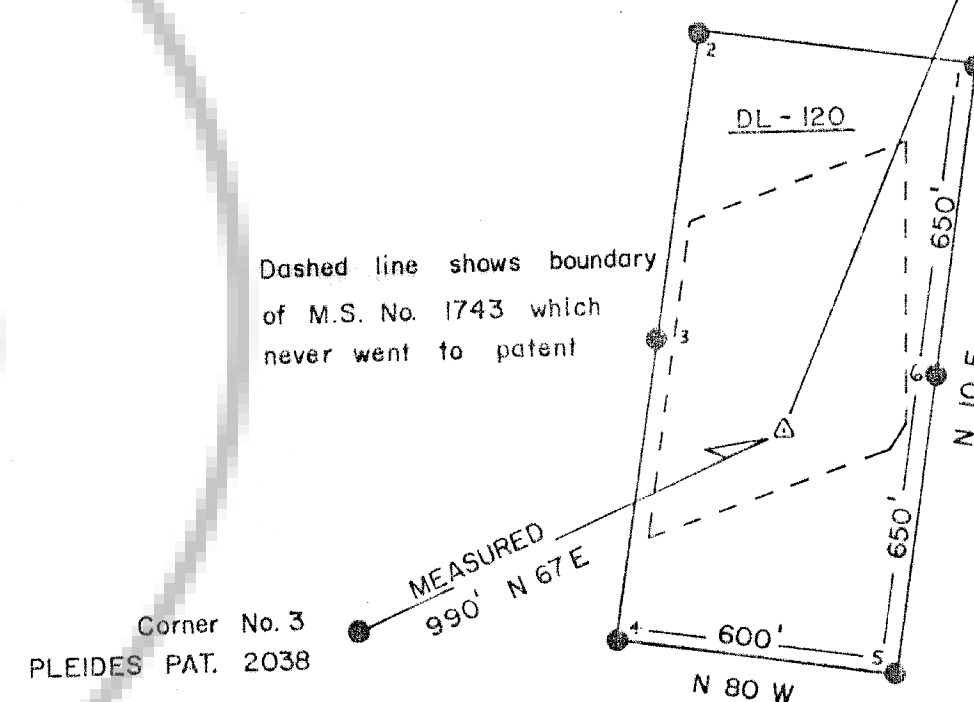


SEC 26 SEC 25
SEC 35 SEC 36

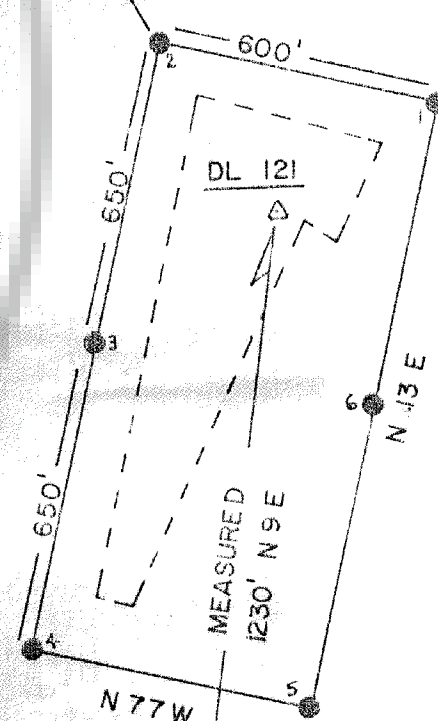
T 5 S SEC 35 SEC 36
T 6 S SEC 2 SEC 1

R 64 E
R 65 E



Dashed line shows boundary of M.S. No. 1743 which never went to patent

Corner No. 3
PLEIDES PAT. 2038



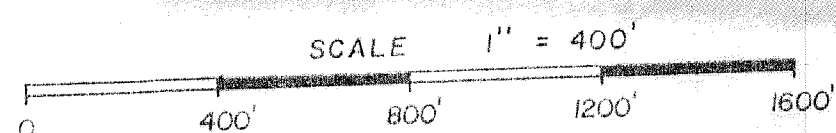
Dashed line shows boundary of M.S. No. 2071 which never went to patent

Corner No. 4
MISER'S DREAM PAT. 2089

MAP of the DL-120 and DL-121 LODE MINING CLAIMS
Sec 36 of T5S, R64E and Sec 1 of T6S, R64E, MDM
LINCOLN CO., NEVADA FERGUSON (DELAMAR) MINING DISTRICT

LOCATOR: FISCHER-WATT GOLD CO.
114 TUCKER ST., STE. 7
KINGMAN, ARIZ. 86401

- △ LOCATION MONUMENT
- CORNER or SIDE CENTER



No. 91183
FILED AND RECORDED AT REGISTER'S OFFICE
Peter D. Huber
9 MAR 1989
A 30 MINUTES PAST 1 O'CLOCK
P M IN BOOK 25 OF OFFICIAL
RECORDS, PAGE 25525 LINCOLN
COUNTY, NEVADA.
John Huber
COUNTY RECORDER

