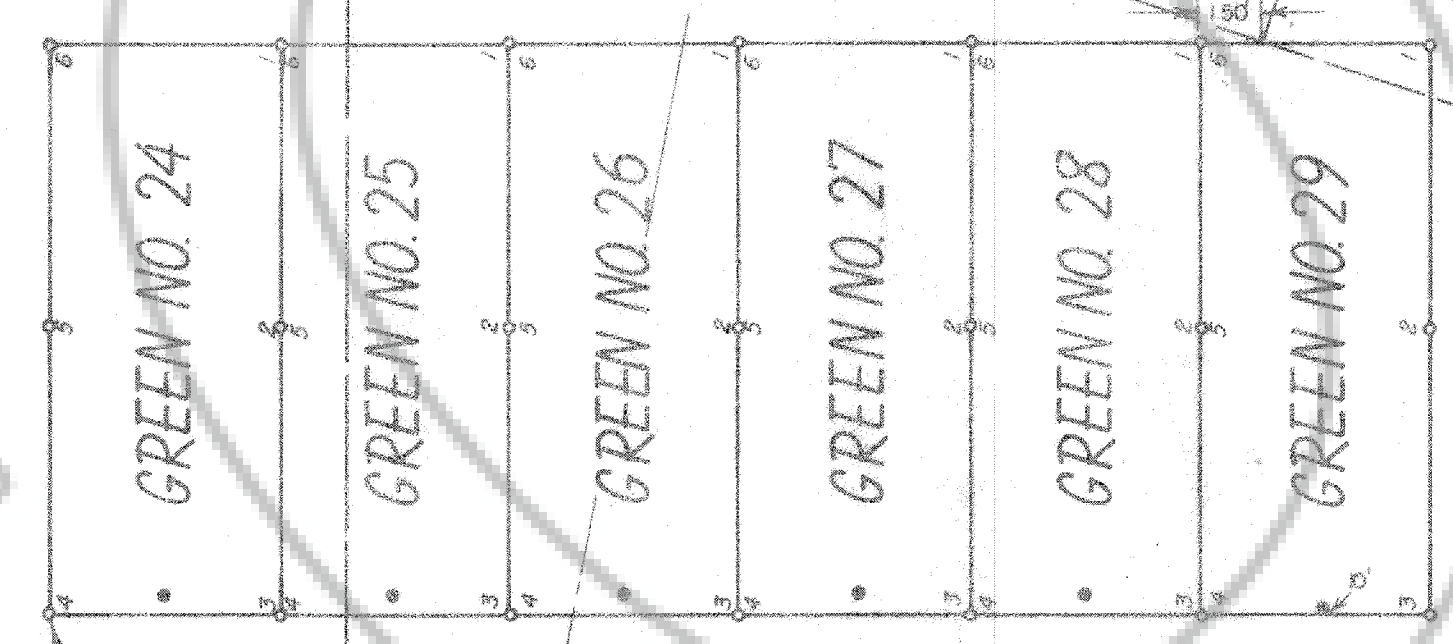
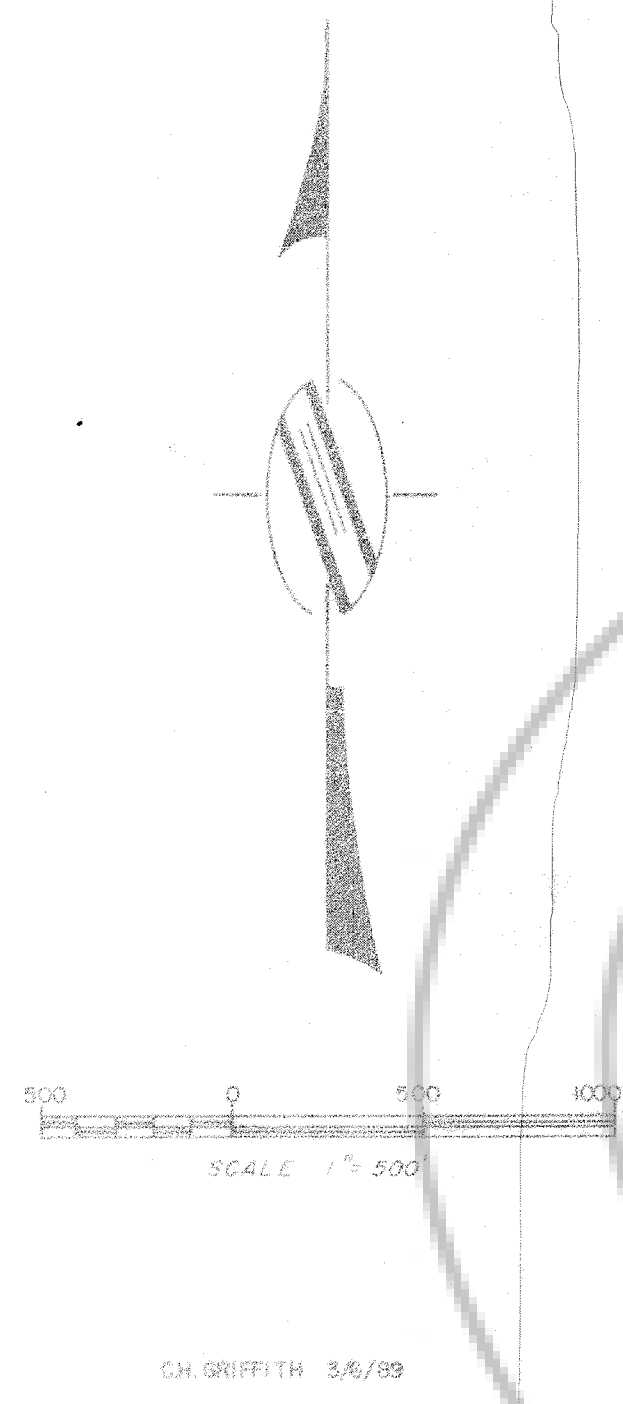
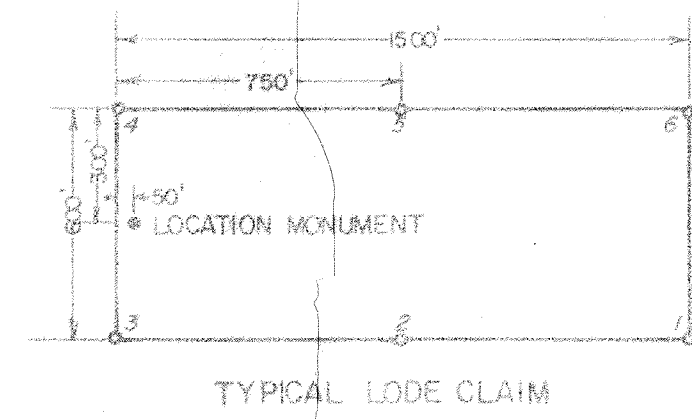


T. 8 S., R. 68 E., M.D.B. & M.



NOTES:

- 1- Green numbers 24, 25 & 26 were located on Jan. 2, 1989.
- 2- Green numbers 27 & 28 were located on Jan. 27, 1989.
- 3- Green number 29 was located on Feb. 25, 1989.
- 4- All location monuments (*) are 50' from end centers, unless otherwise noted.

No. 90860
 REPT. AND R. LOCATED AT REQUEST OF
 DAVE SCHMUTZ
 MARCH 15, 1989
 A. L. HULLS, COUNTY CLERK
 COUNTY OF LINCOLN
 COUNTY, NEVADA
 FRANK C. HULSE
 COUNTY REGISTER
 Mary Corrie Deputy

BOOK 84 PAGE 265

MAP OF LODGE CLAIMS
GREEN Nos. 24 - 29

LOCATED IN SECTIONS 26 & 27 OF UNSURVEYED
 AREA IN T. 8 S., R. 68 E., MOUNT DIABLO BASELINE
 AND MERIDIAN
 LINCOLN COUNTY, NEVADA

LOCATED BY:
 CLIFFORD PHILLIPS - 1295 N. HIGHWAY 18, ST. GEORGE, UTAH
 DAVE SCHMUTZ - 811 N. 1700 E., ST. GEORGE, UTAH
 DEE BURGESS - BERYL, UTAH
 RICK BURGESS - BERYL, UTAH

