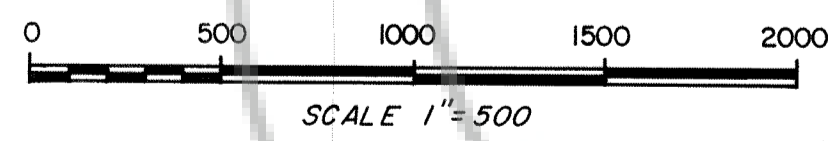
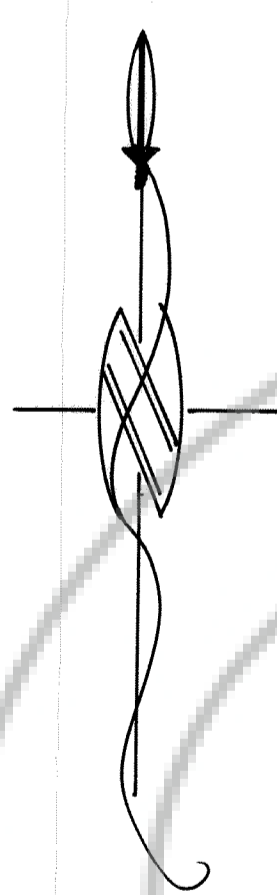
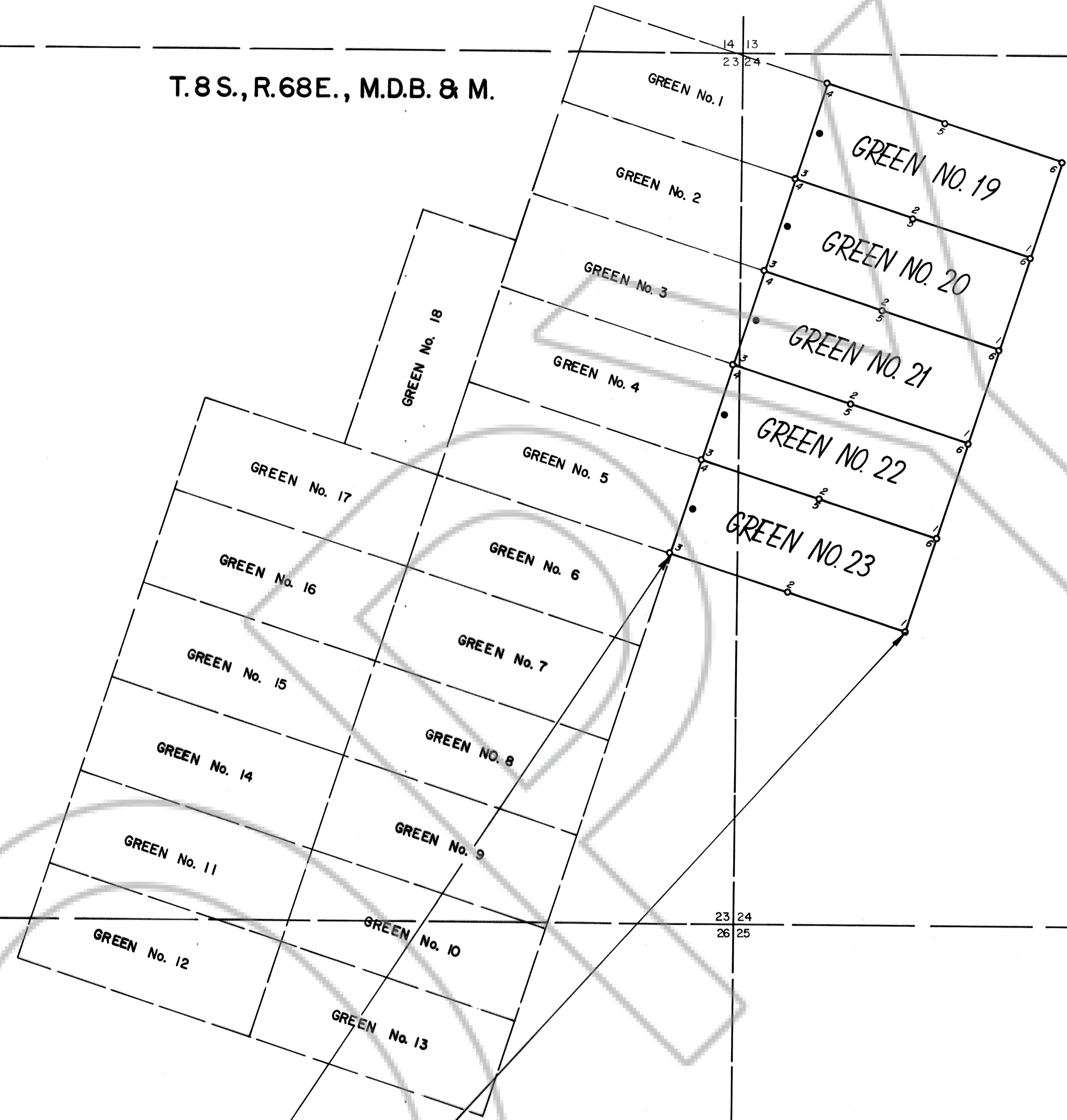
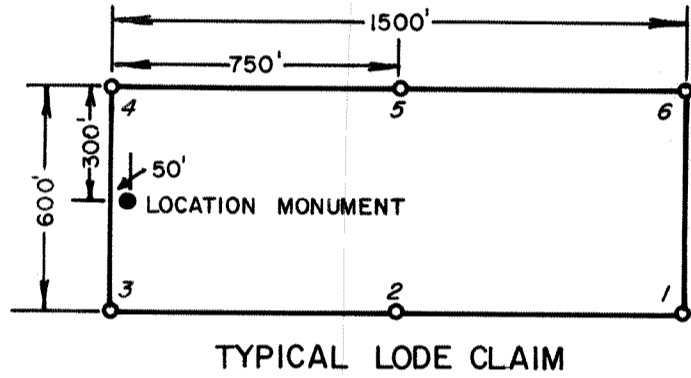


T. 8 S., R. 68 E., M.D.B. & M.

R. 68 E. R. 69 E.



APPROX. N. 42° 30' E. 900'
 APPROX. N. 42° 15' E. 9470'

NOTES:

- 1 - GREEN Nos. 19, 20, 21, 22 & 23 WERE LOCATED ON NOV. 29, 1988
- 2 - ALL LOCATION MONUMENTS (•) ARE 50' FROM END CENTERS

90703
 CLIFFORD PHILLIPS
 FEBRUARY 13, 1989
 A. 40
 P. 84
 67
 FRANK C. HUNCE
 Mara Condie Heston
 BOOK 84 PAGE 67

**MAP OF LODGE CLAIMS
 GREEN Nos. 19-23**

LOCATED IN SECTIONS 23 & 24 OF UNSURVEYED
 AREA IN TOWNSHIP 8 SOUTH, RANGE 68 EAST, MOUNT
 DIABLO BASELINE & MERIDIAN
 Lincoln County, Nevada

LOCATED BY:
 CLIFFORD PHILLIPS - 1295 N. HIGHWAY 18 - ST. GEORGE, UTAH
 DAVE SCHMUTZ - 811 N. 1700E., ST. GEORGE, UTAH
 DEE BURGESS - BERYL, UTAH
 RICK BURGESS - BERYL, UTAH