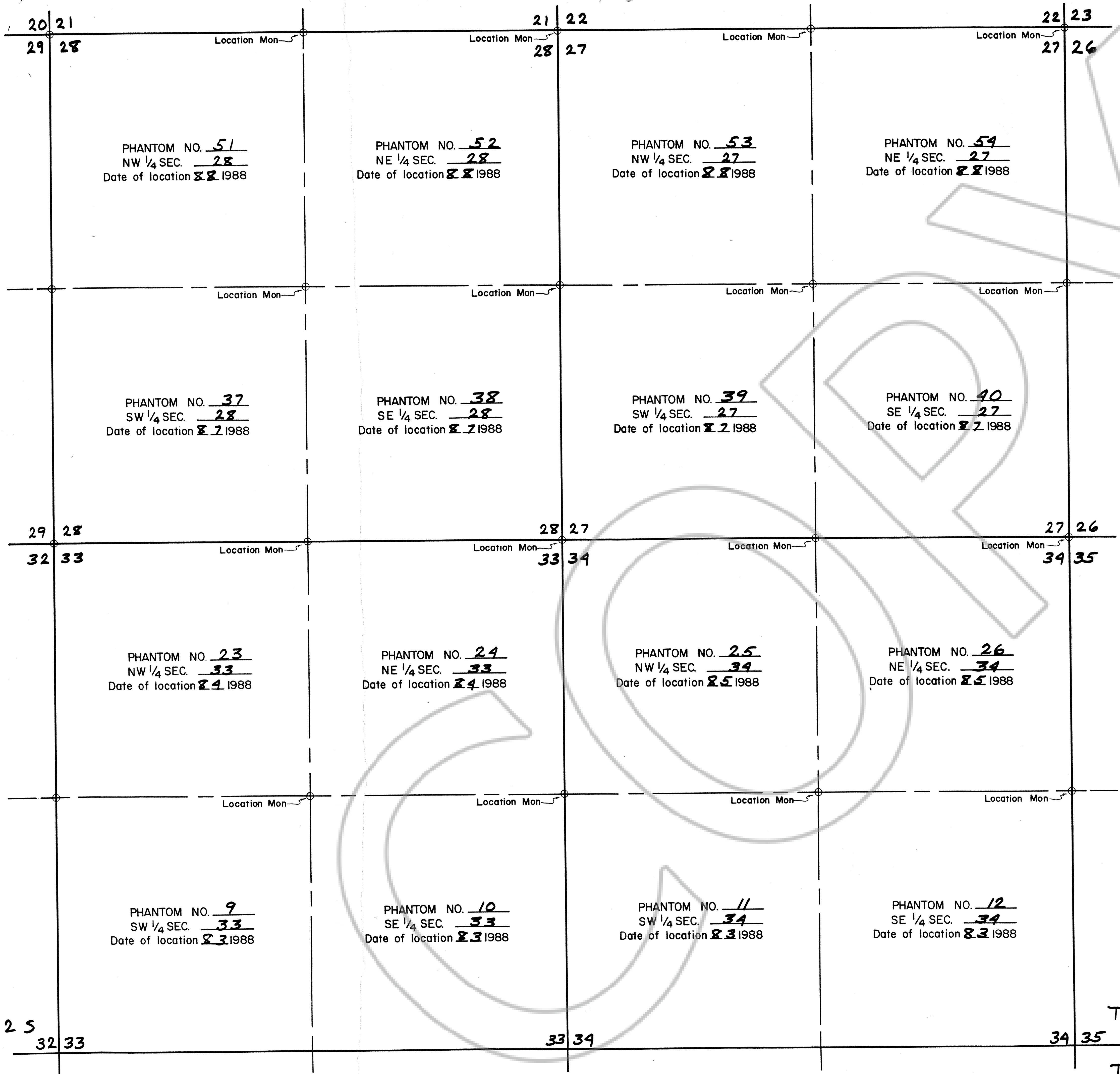
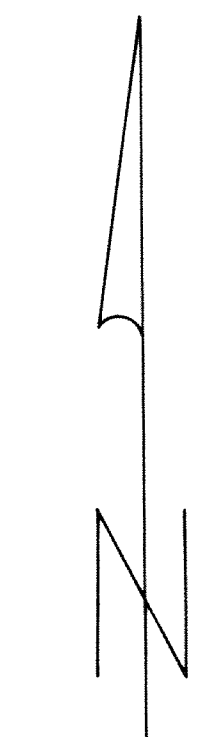


70E



**NOTES:** All are 160 acres, association claims taken by legal subdivision.  
 All location monuments are 3" plastic pipe at least 5' long and sunk at least 1' into the ground, situated at the NE corner of each claim.



TRUE NORTH  
 SCALE 1" = 500'

**MAP**

Showing a portion of the Phantom group of placer claims situated in the Unknown Mining District Lincoln County, Nevada.

**Located by:**

- George D. Fehr \_\_\_\_\_ 10 Exchange Place, Suite 610  
Salt Lake City, Utah 84111
- Eloise M. Fehr \_\_\_\_\_ 2127 St. Mary's Drive  
Salt Lake City, Utah 84108
- Janet N. Davison \_\_\_\_\_ 10 Exchange Place, Suite 610  
Salt Lake City, Utah 84111
- Joe Lyon, Jr. \_\_\_\_\_ 600 East Capitol Street  
Salt Lake City, Utah 84103
- Hal Nichols \_\_\_\_\_ 230 South Decatur, Suite 224  
Las Vegas, Nevada 89107
- Teresa Nichols \_\_\_\_\_ c/o Hal Nichols, 230 South Decatur,  
Suite 224, Las Vegas, Nevada 89107
- Doug Nichols \_\_\_\_\_ c/o Hal Nichols, 230 South Decatur,  
Suite 224, Las Vegas, Nevada 89107
- Donald J. Fehr \_\_\_\_\_ 3001 East Millcreek Road  
Salt Lake City, Utah 84104

90199  
 T OF  
 George D. Fehr  
 NOVEMBER 1, 1988  
 A S 11 K  
 A 83 L  
 T 42 DEN  
 C  
 FRANK C. HULSE  
 ER  
 Max Cordis Deputy

T 12 S  
 32 33  
 T 13 S

T 12 S  
 34 35  
 T 13 S