

A MAP OF THE ROZ LODGE CLAIMS

T. 7 N., R. 68 E., M.D.M.

LINCOLN COUNTY, NEVADA

114	214	314								
113	213	313								
112	212	312								
111	211	311								
110	210	310								
109	209	309								
108	208	308								
107	207	307								
106	206	306								
105	205	305								
104	204	304								
103	203	303								
102	202	302								
101	201	301								
100	200	300								

TIE CORNER

28

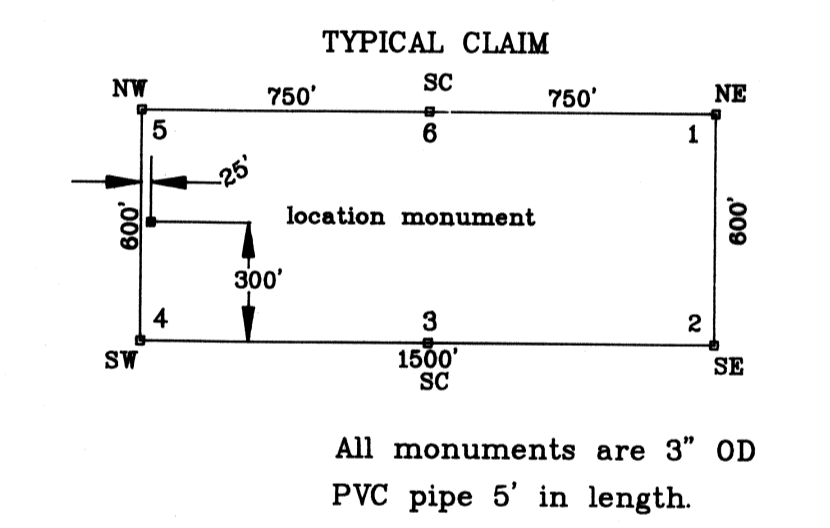
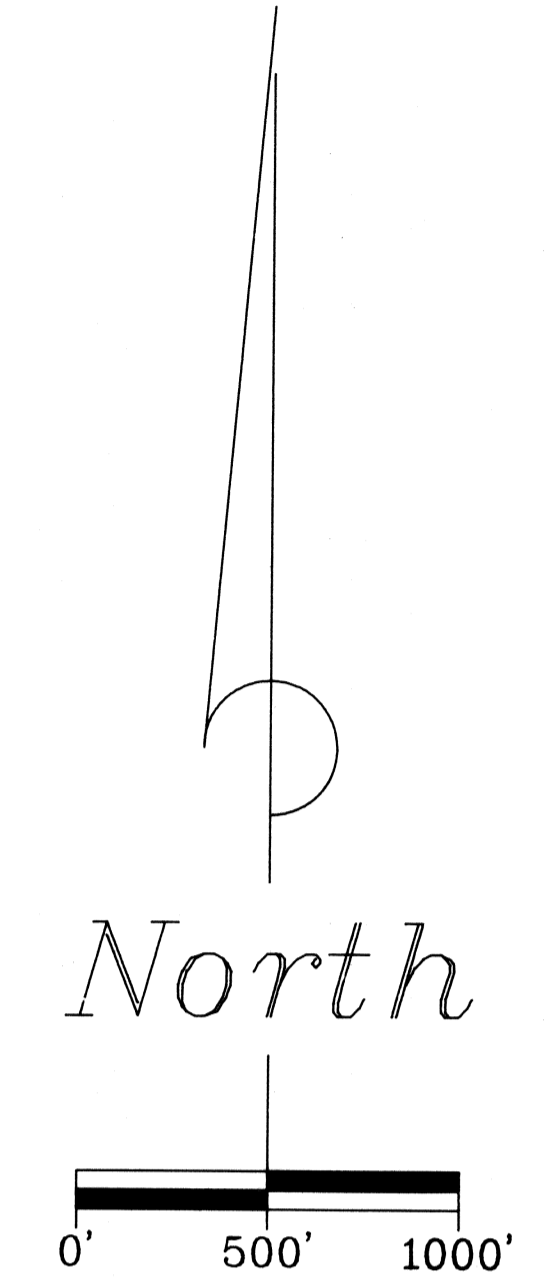
27

26

33

34

35



DATE OF LOCATION:
 ROZ 100 to 114 on June 28, 1988.
 ROZ 200 to 214 and 300 to 314 on June 29, 1988.
 ROZ 400 to 412 and 500 to 512 on June 30, 1988.
 ROZ 600 to 612 and 700 and 712 on July 1, 1988.

TIE: The Northeast corner of ROZ 314 is North 9000 feet and East 3000 feet of the North 1/4 corner Section 4, T. 6 N., R. 68 E., M.D.M.

NOTE: All section lines are projected.

BASIS OF BEARING:
 The north line of the NW 1/4 of Section 4, T. 6 N., R. 68 E. M.D.M. is assumed to bear East and West.

58483
 FILED AND RECORDED AT REQUEST OF
 RODNEY D. SCHEETZ
 AUGUST 11, 1988
 AT THE OFFICE OF THE COUNTY CLERK
 LINCOLN COUNTY, NEVADA
 FRANK C. HULSE
 COUNTY RECORDER
Maria Corina Miquely

BOOK 81 PAGE 456

RODNEY D. SCHEETZ	
361 PALMER DELTA, COLORADO 81416	
R.S.	
D.H.	1"=500'
J8848D1A	1 OF 2