

T4S R55E 2 11 12

# SANDY LODGE CLAIMS

# 220-222, 229-231, 13-20, 22, 24, 26, 57, 58

Location: Sections 11, 12, 13, 14, 23, & 24 T4S, R56E MDBM  
Templute Mining District, Lincoln Co., Nevada

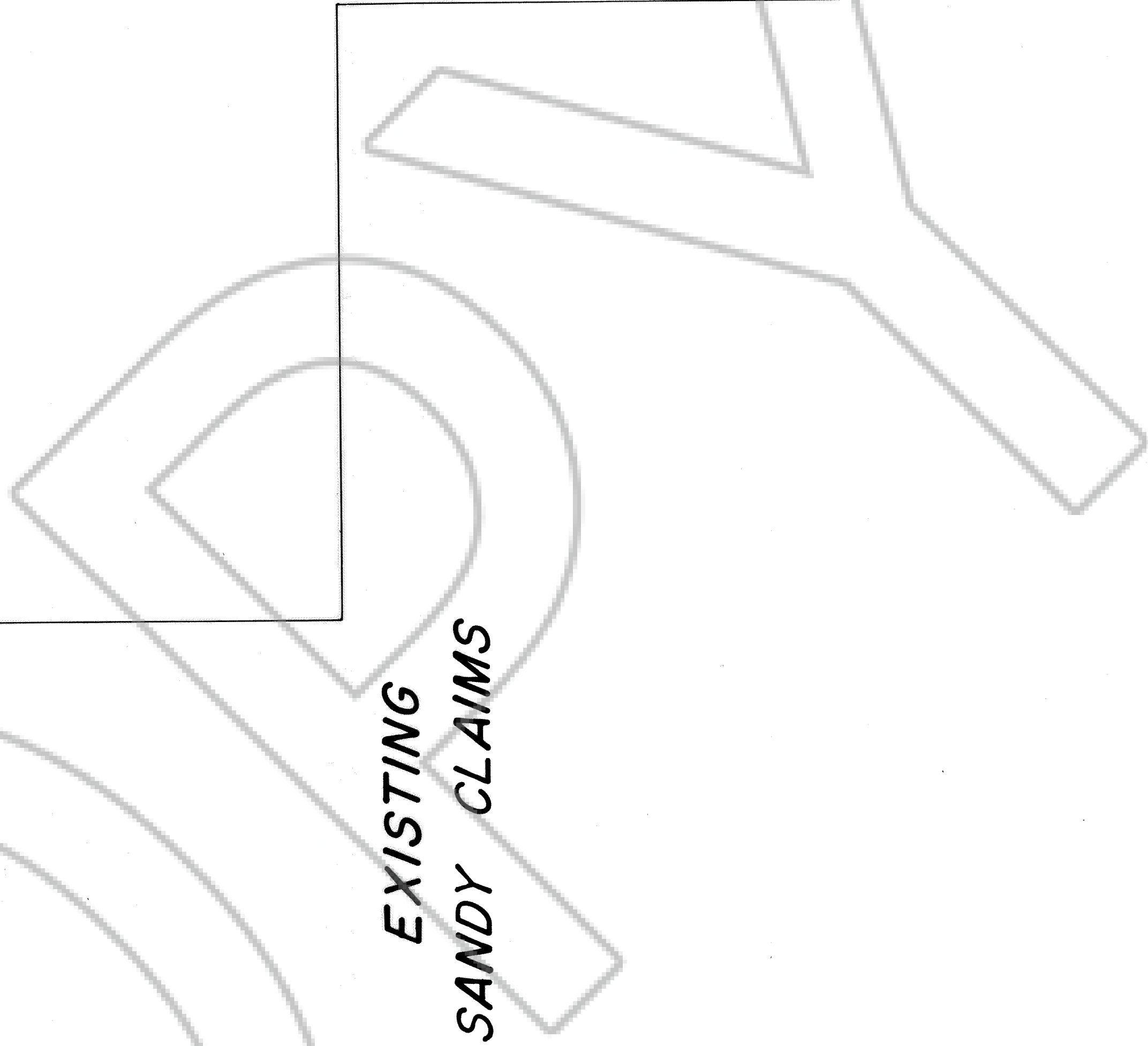
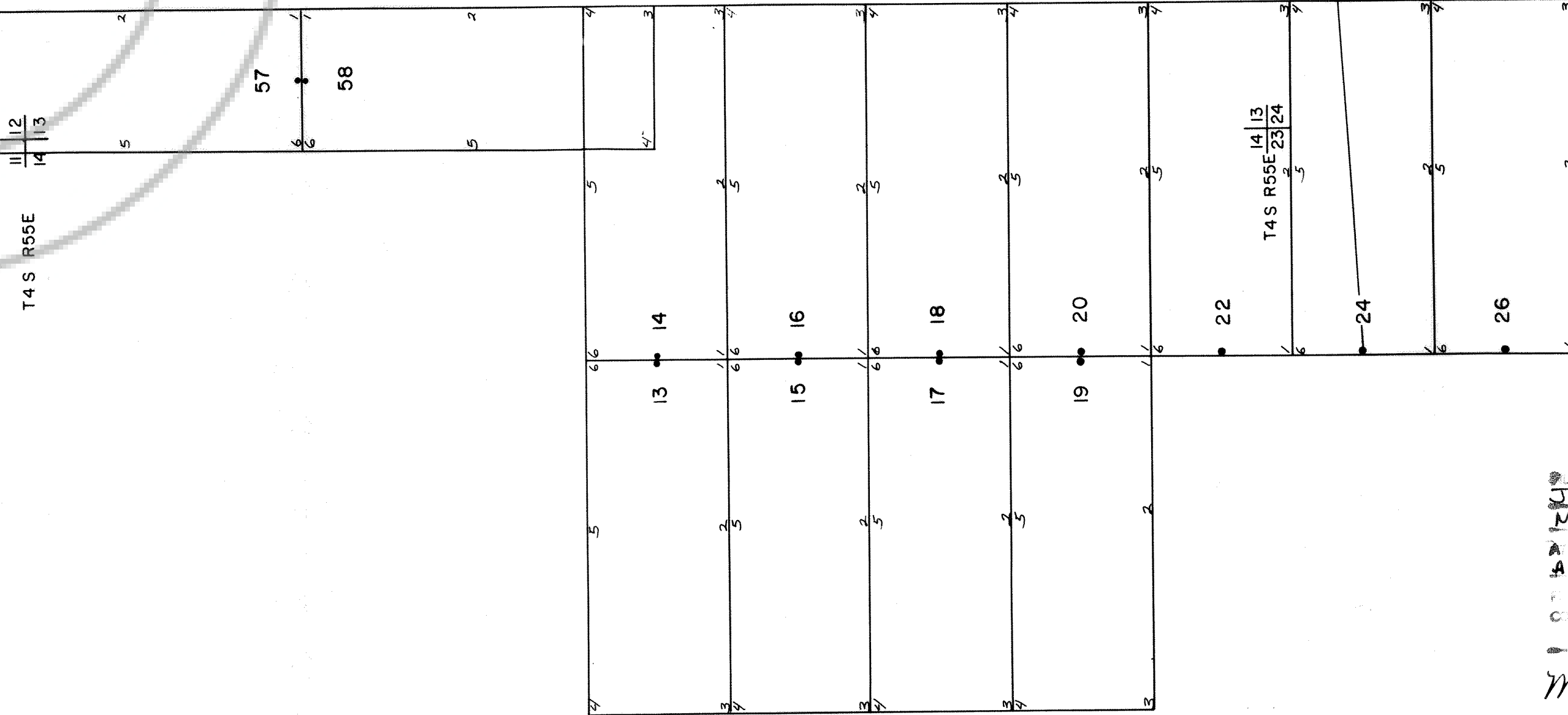
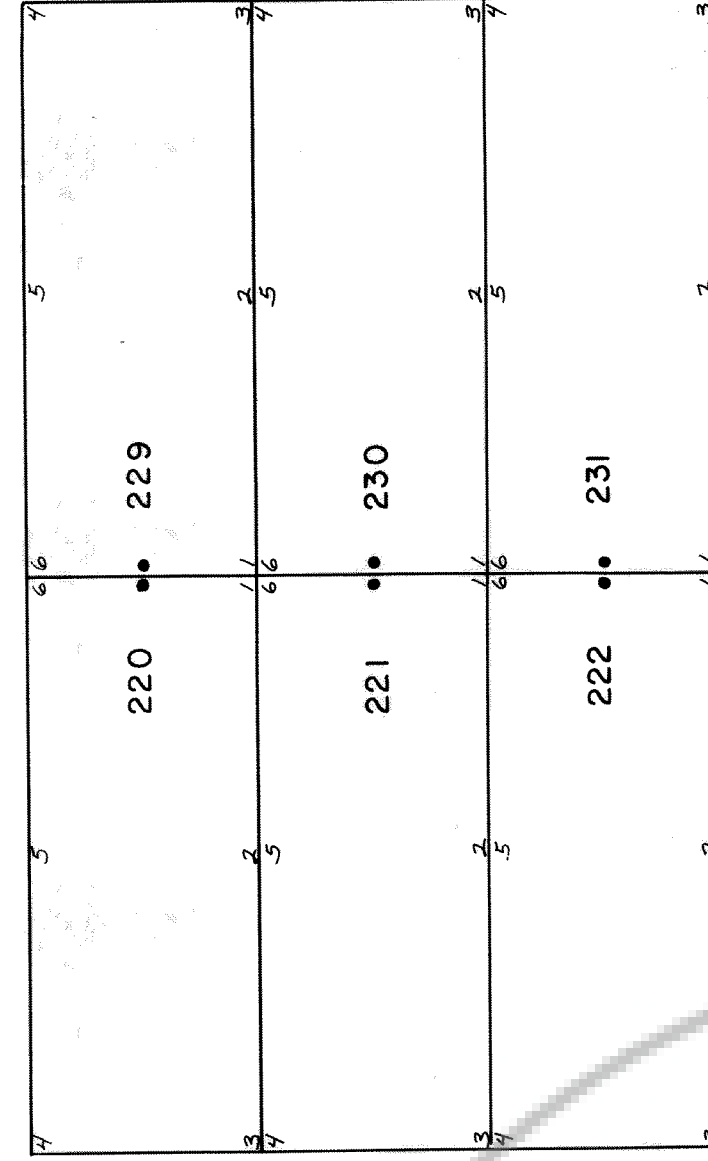
Locator: E. Proebstler & Co.  
127 Cheney St.  
Reno, Nevada 89501

Location date: All Sandy claims March 30, 1933

Title: The discovery monument of Sandy #24 is located 6260' S361/4' from the common corner of sections 13 & 24 T4S, R56E and sections 18 & 30 T4S, R56E MDBM

- The discovery monuments of Sandy #220-222, 229-231 are located 20' from the end lines.
- The discovery monuments of Sandy #13-20, 22, 24, 26, 57, & 58 are located 10' from the end lines.

All claims measure 500' X 1500'



T4S R55E 13 18 24 30 T4S R56E MDBM

6260' S86 1/4° W

No. 88741  
 AS EXHIBIT TO THE DEED OF  
 J. PROBSTLER & CO.  
 MAY 9, 1933  
 A 55  
 A 54  
 A 54  
 COUNTY, NEVADA  
 FRANK C. HULSE  
 COUNTY CLERK  
 M. Condit / Deputy