

LOCATION MAP

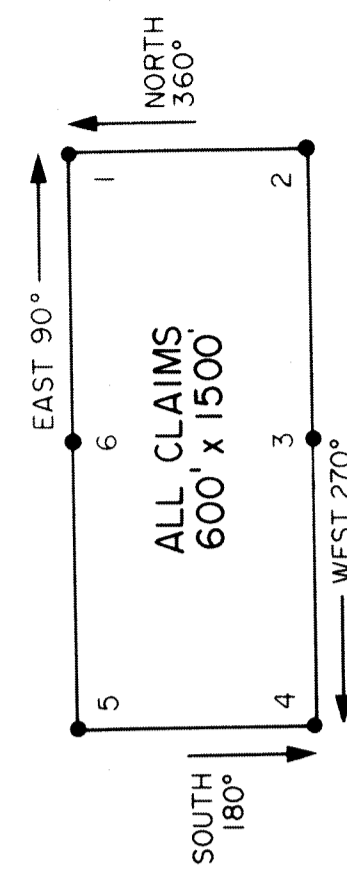
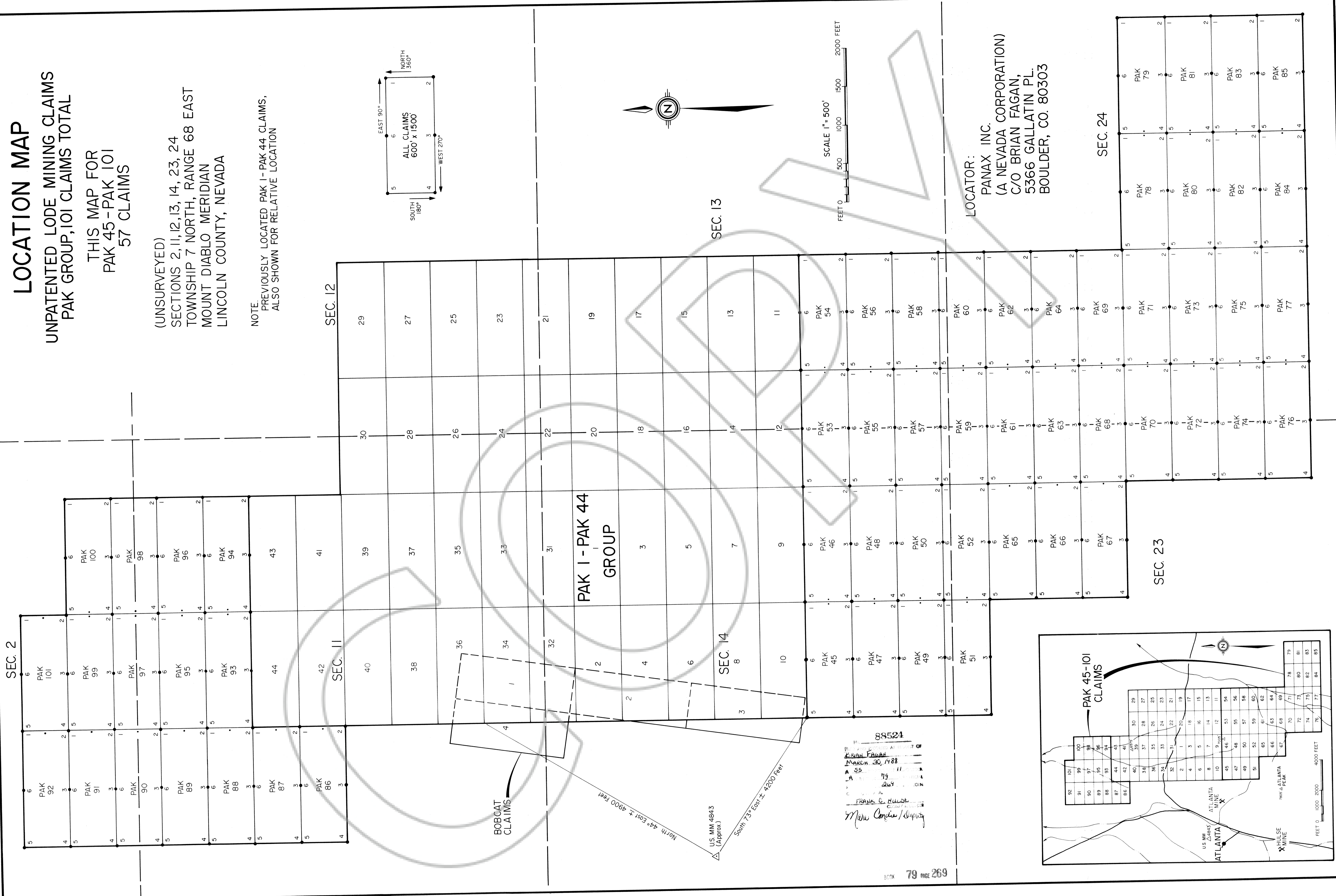
UNPATENTED LODE MINING CLAIMS
PAK GROUP, 101 CLAIMS TOTAL

THIS MAP FOR
PAK 45-PAK 101
57 CLAIMS

(UNSURVEYED)

SECTIONS 2, 11, 12, 13, 14, 23, 24
TOWNSHIP 7 NORTH, RANGE 68 EAST
MOUNT DIABLO MERIDIAN
LINCOLN COUNTY, NEVADA

NOTE:
PREVIOUSLY LOCATED PAK 1-PAK 44 CLAIMS,
ALSO SHOWN FOR RELATIVE LOCATION



North 44° East ± 4900 Feet
South 73° East ± 4200 Feet
U.S. MM 4843 (Approx.)

88524
SEARCHED
INDEXED
SERIALIZED
MAR 30 1988
FBI - DENVER
FRANK C. HUBB
Maurice Combs/Deputy

LOCATOR:
PANAX INC.
(A NEVADA CORPORATION)
C/O BRIAN FAGAN,
5366 GALLATIN PL.
BOULDER, CO. 80303

