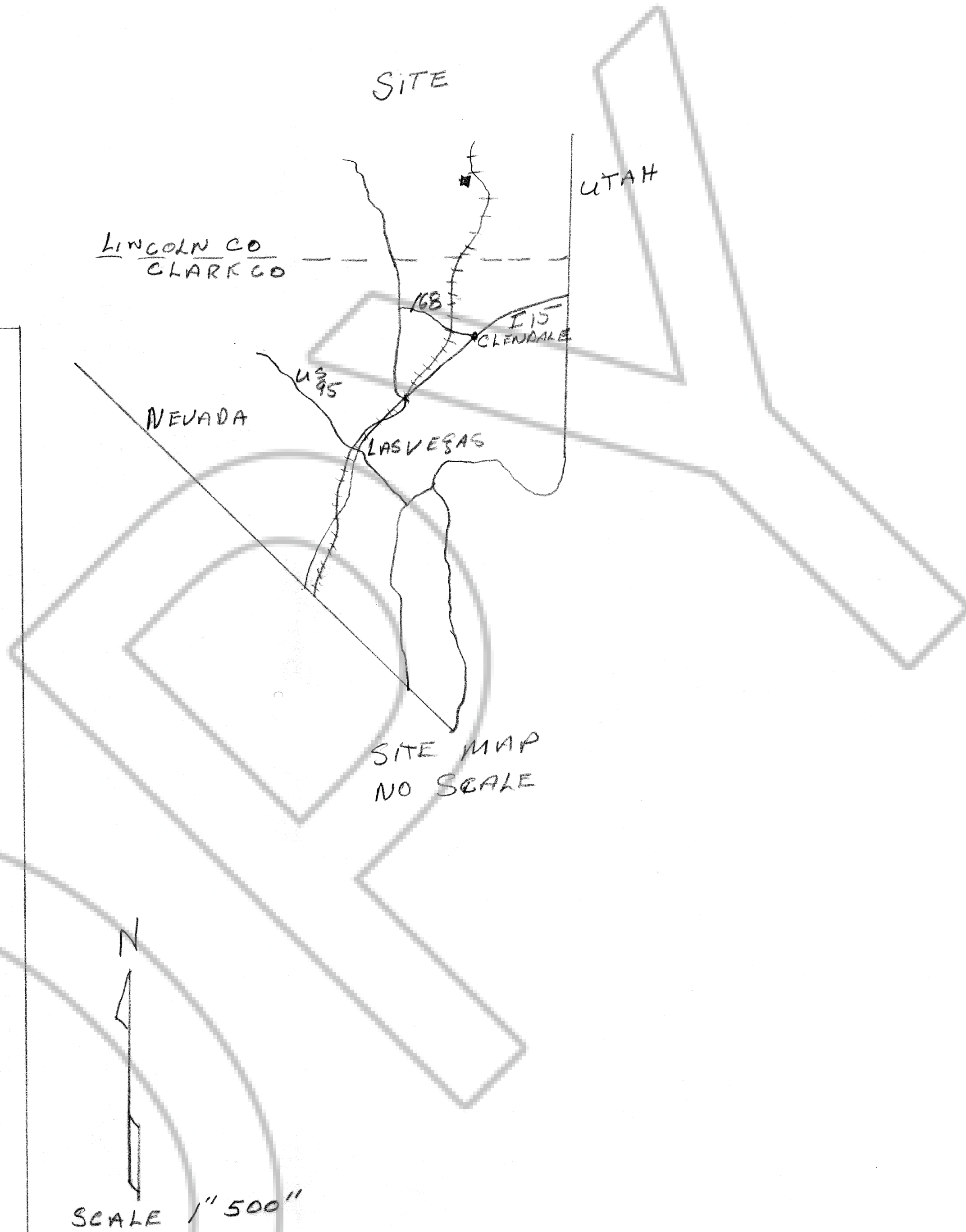


SECTION 12 T12S R65E MDB+M

LINCOLN COUNTY NEVADA

PEM # 25 SW 1/4 NW 1/4	PEM # 26 SE 1/4 NW 1/4
PEM # 23 40 ACRE NW 1/4 SW 1/4	PEM # 24 40 ACRE NE 1/4 SW 1/4



PHILIP FRANKLIN / 1918 ROSEDALE AV
LAS CRUCES NM 88001
EDWARD AND MARY ELLEN WILLARD
305 FALCON LN LAS VEGAS NV 89107

RECORDERS STAMP
No. 87067
FILED AND RECORDED AT REQUEST OF
PHILIP FRANKLIN
JUNE 2, 1987
AT 15 MINUTES PAST 1 O'CLOCK
P.M. IN BOOK 75 OF OFFICIAL
RECORDS, PAGE 446 LINCOLN
COUNTY, NEVADA
FRANK C. HULSE
COUNTY RECORDER
Mara Condie Deputy