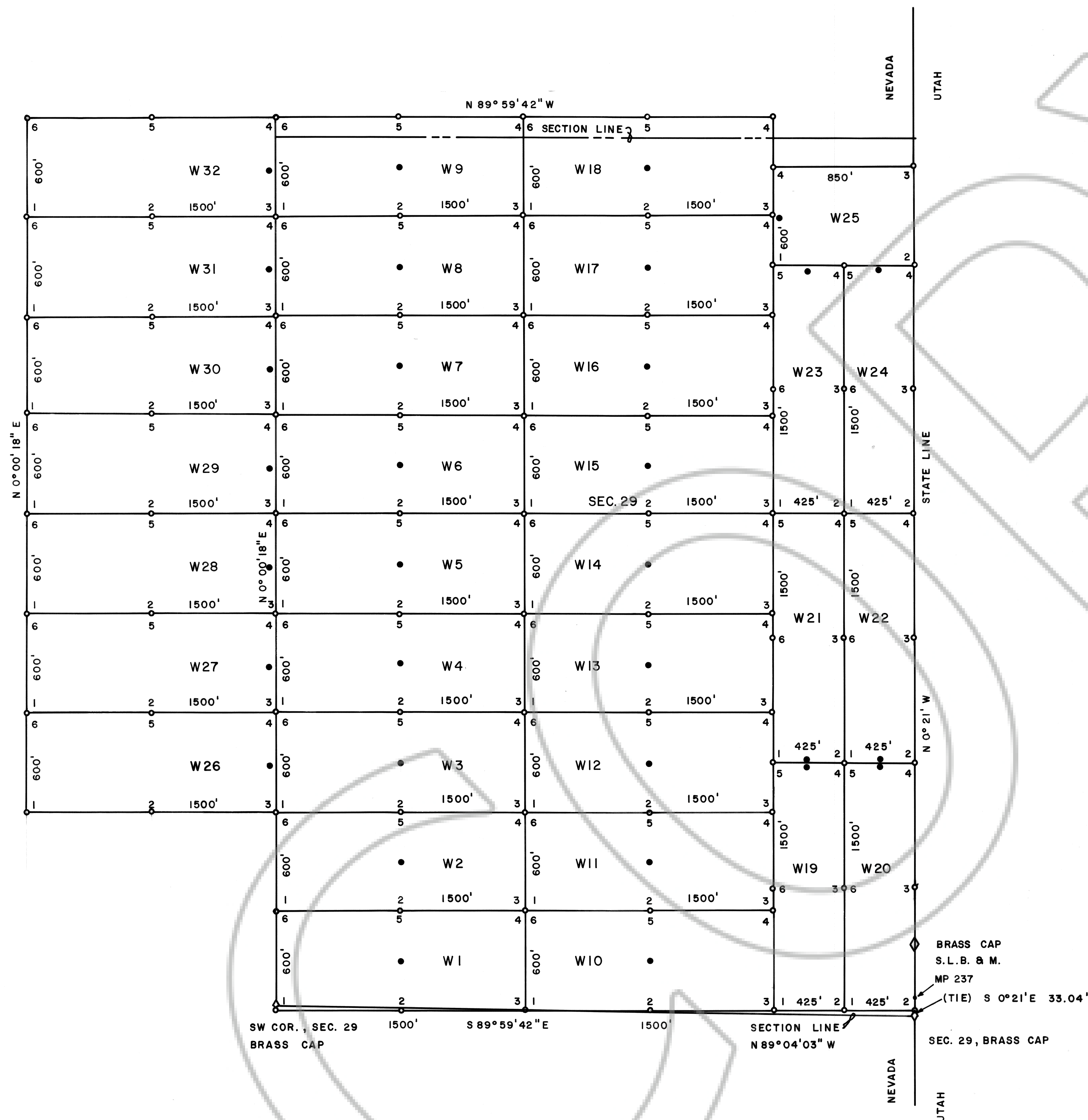


SECTION 29, T1N, R71E, M.D.B. & M.

Map showing location of the W claims located in Section 29, T1N, R71E, M.D.B. & M. Ties and a field check were performed by Frank C. Hulse, R.L.S. 6498, of Hulse Engineering Inc.

Frank C. Hulse
 Frank C. Hulse
 R.L.S. 6498
 6/1/87

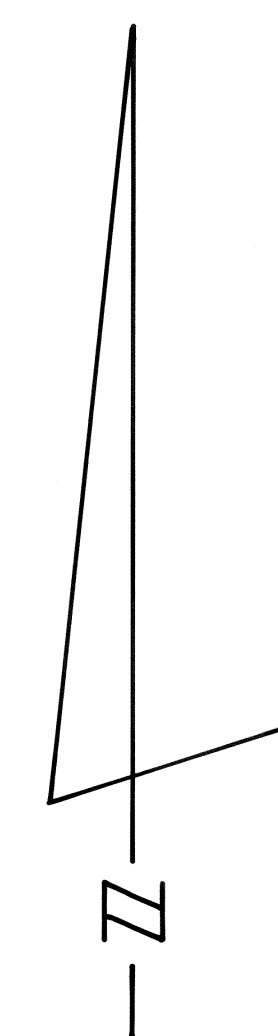


- Location Monuments
- Corner Posts and Side Centers

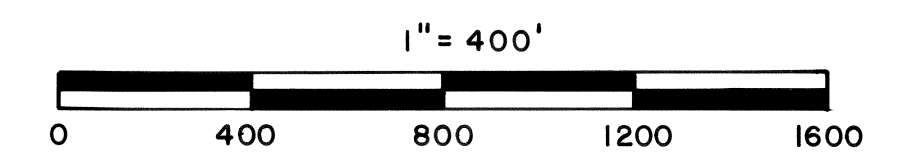
W 1-18 Located April 26, 1987.
 Filed with Lincoln County Recorder April 28, 1987.
 W 19-25 Located May 2, 1987.
 Filed with Lincoln County Recorder June 1, 1987.
 W 26-32 Located May 29, 1987.
 Filed with Lincoln County Recorder June 1, 1987.

LOCATORS: Ervin Peterson
 Nolan Walker
 Larry Walker

Beaver, UT



BASIS OF BEARING : SOLAR OBSERVATION



No. 87045
 FILED AND RECORDED AT REQUEST OF
 Ervin Peterson
 Line 1187
 AT 30 MINUTES PAST 9 O'CLOCK
 4 PM IN BOOK 75 OF OFFICIAL
 RECORDS, PAGE 420 LINCOLN
 COUNTY, NEVADA.
Frank C. Hulse
 COUNTY RECORDER

MAP OF W LODE CLAIMS WITHIN
 SECTION 29, T1N, R71E, M.D.B. & M.