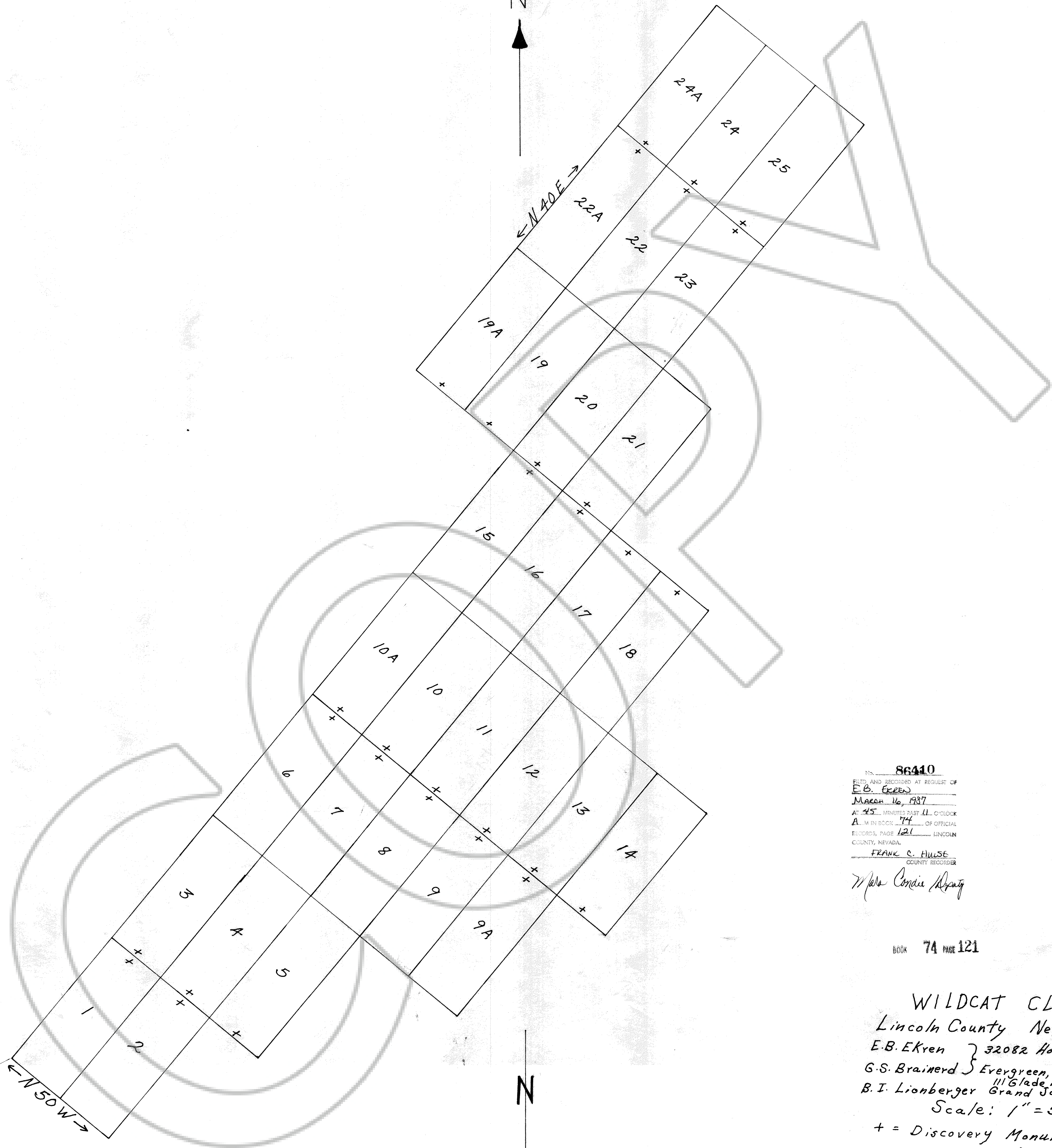


564° W 27,400'
to NE corner Sec. 1, T11S, R63E

← N 50 W →

N

N



No. 86410
RECORD AND RECORDED AT REQUEST OF
E.B. EKREN
MARCH 16, 1937
AT 45 MINUTES PAST 11 O'CLOCK
A.M. IN BOOK 74 OF OFFICIAL
RECORDS, PAGE 121 LINCOLN
COUNTY, NEVADA.
FRANK C. HULSE
COUNTY RECORDER
Maria Cordis Murphy

BOOK 74 PAGE 121

WILDCAT CLAIMS
Lincoln County Nevada
E.B. EKREN } 32082 Horseshoe Drive
G.S. Brainerd } Evergreen, Co. 80439
B.I. Lionberger } 1116 Glade Park Rd.
Grand Jct., Co. 81503
Scale: 1" = 500'
+ = Discovery Monument
UNKNOWN Mining District