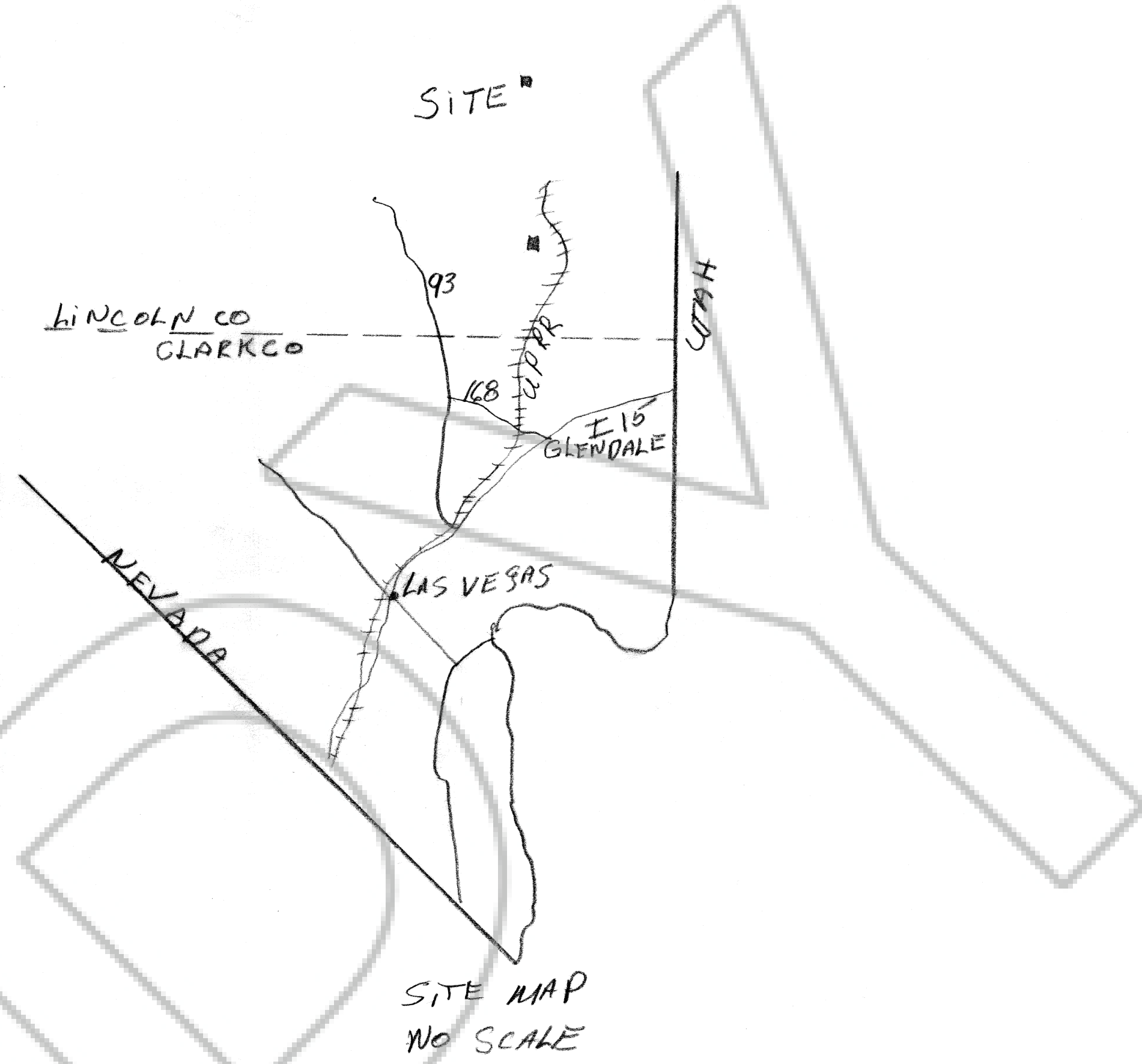
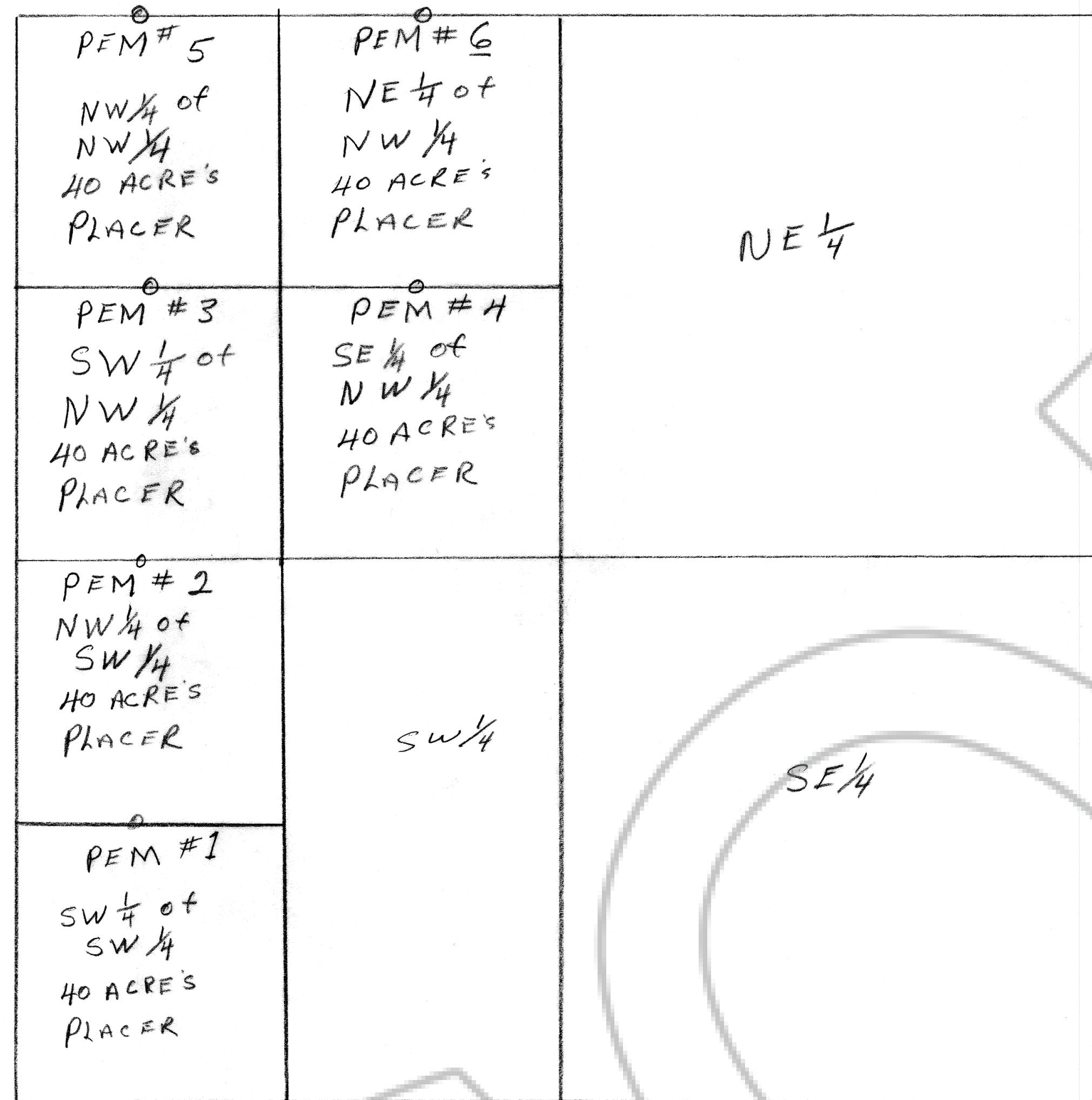


SECTION ONE TOWNSHIP 12S RANGE 65E MDB+M

LINCOLN COUNTY NEVADA



N

SCALE 1" = 500'

LEGEND
O 3" PVC PIPE

PHILIP FRANKLIN / 1918 ROSEDALE AV
 LAS CRUCES NM - 88001
 EDWARD AND MARY ELLEN WILLARD
 305 FALCON LANE LAS VEGAS NV 89107
 JAN 7th 1987

RECORDER STAMP

No. 86103

FILED AND RECORDED AT REQUEST OF
 ARTHUR C. LOHR
 JAN. 7 1987
 AT 55 MINUTES PAST 1 O'CLOCK
 P.M. IN BOOK 73 OF OFFICIAL
 RECORDS, PAGE 314 LINCOLN
 COUNTY, NEVADA

FRANK HULSE
 COUNTY RECORDER

Mona Conner Deputy