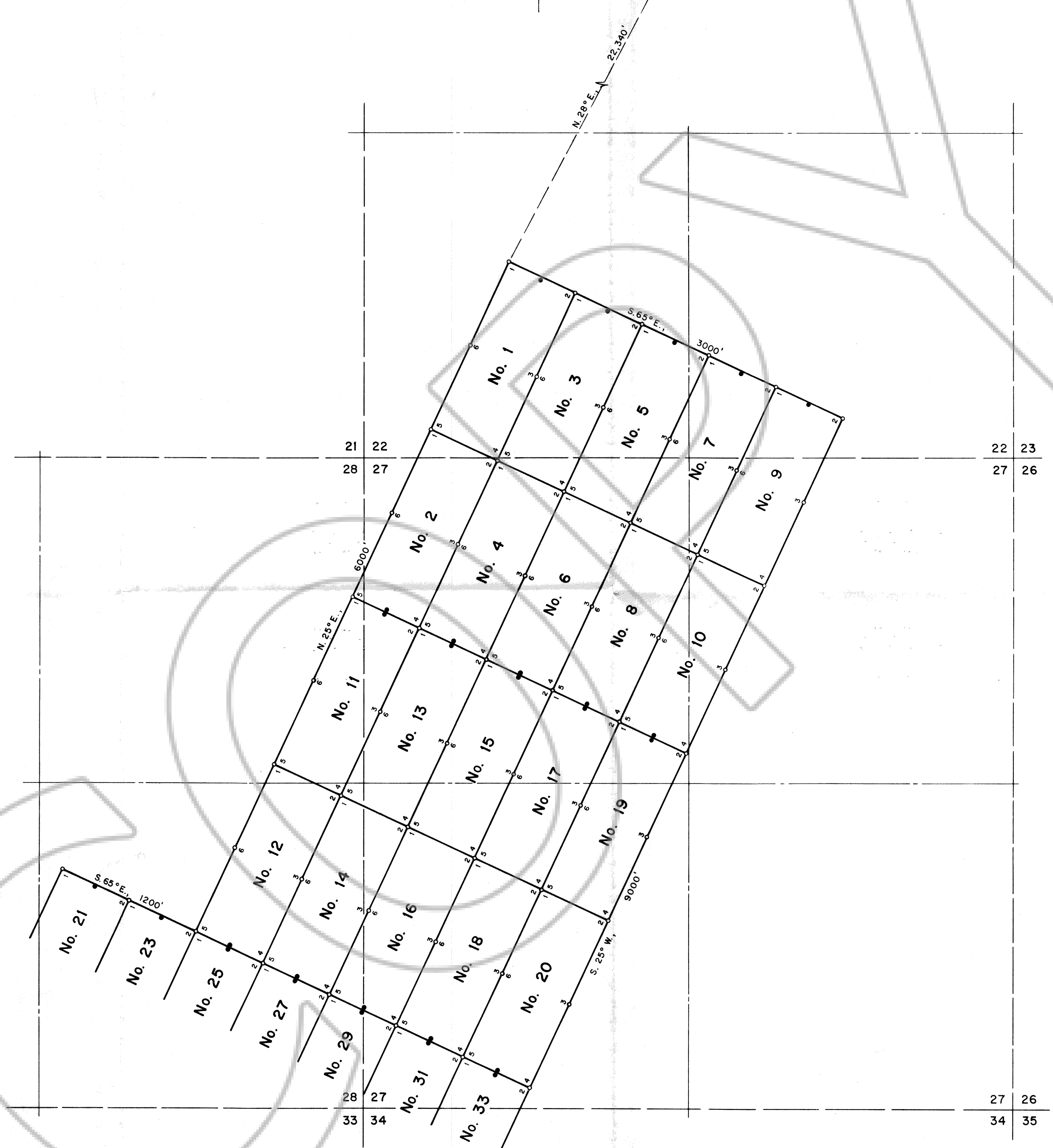


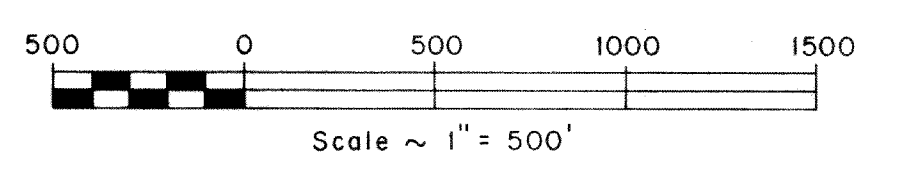
R. 65 E.

N 89°59' W 1099.56' 35 36 T. 8 S.  
2 1 T. 9 S.



- NOTES:
- All claims are 600' wide x 1500' long with Discovery Monuments 10' from end lines, except as shown and noted.
  - At all Corners, Side Centers and Discovery Monuments are 4" diameter x 4 1/2' long posts with aluminum tags denoting the appropriate corners.
  - = Corner and Side Center posts.  
● = Discovery Monuments
  - These claims are located by: Hecla Mining Company  
9769 West 119th Drive, Suite 34  
Broomfield, Colorado 80020
  - VAN No's 1, 3, 5, 7 and 9 located on November 8, 1985.  
VAN No's 2 and 11 located on November 9, 1985.  
VAN No's 4, 6, 8, 10, 13, 15, 17 and 19 located on November 10, 1985.  
VAN No's 22 and 35 located on November 11, 1985.  
VAN No's 24, 26, 28, 30, 32, 34, 37, 39, 41, 43 and 45 located on November 13, 1985.  
VAN No's 12, 14, 16, 18, 20, 21, 23, 25, 27, 29, 31 and 33 located on November 14, 1985.  
VAN No's 36, 38, 40, 42, 44, 46 thru 57, and 59 thru 63 located on November 15, 1985.  
VAN No's 58 and 64 located on November 16, 1985.
  - There is a total of 64 claims.

No. 84481  
FILED AND RECORDED AT REQUEST OF  
BOUNDY & FORMAN, INC.  
JAN 8 1985  
AT 1 MINUTES PAST 1 O'CLOCK  
1 IN BOOK 69 OF OFFICIAL  
RECORDS, PAGE 374 LINCOLN  
COUNTY, NEVADA  
YUKINA SEITZ  
COUNTY RECORDER  
*Maria Conner Deputy*



SHEET 1 OF 2 SHEETS

T. 9 S., R. 65 E., M.D.B. & M. (Uns.)

SURVEYED & MAPPED  
BY  
BOUNDY & FORMAN, INC.  
ELY, NEVADA  
NOV. & DEC., 1985

MAP SHOWING  
VAN LODGE MINING CLAIMS  
IN  
T. 9 & 10 S., R. 65 E., M.D.B. & M.  
LINCOLN COUNTY, NEVADA  
FOR  
HECLA MINING COMPANY