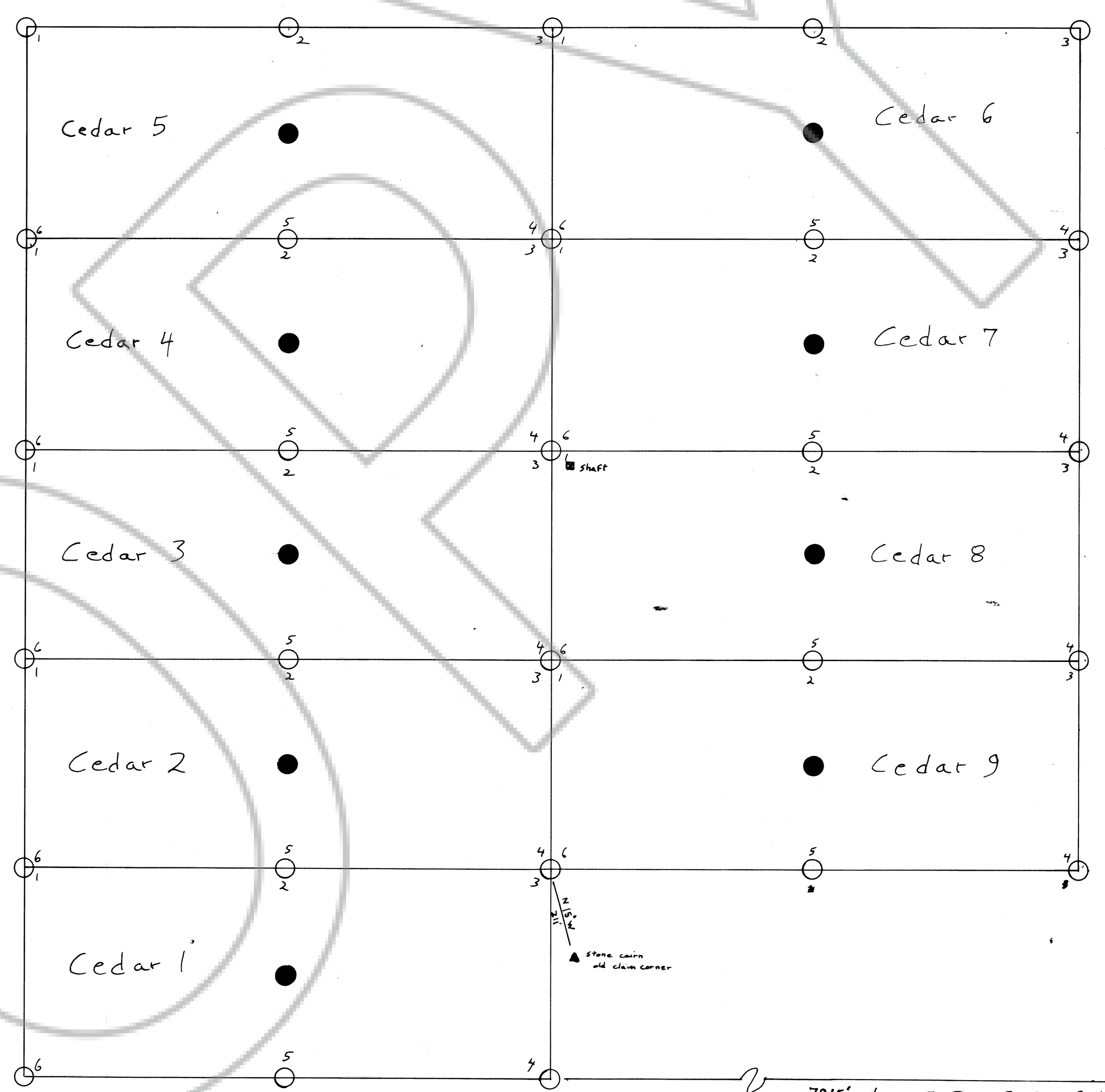




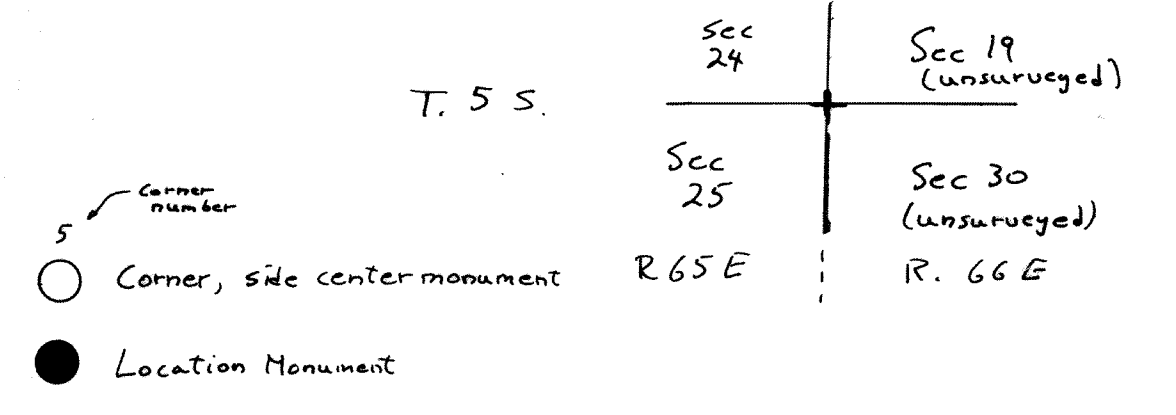
250' 250'  
500'  
Scale: 1" = 250'



Cedar 1-9 claims  
Delamar Mining District  
Lincoln County, Nevada  
December 1985

Located by: Great Basin Consolidated  
Box 2116  
Fallon, NV 89406  
J.F. Leising, agent, on 14 September, 1985  
Claims in: Section 23, T. 5 S. R. 64 E, M.D.M.

Tie: the Southeast Corner Cedar #1  
is 7915 Feet west (bearing 270°) from  
the section corner 24 & 25, T. 5 S. R. 65 E,  
& 19, 30 T. 5 S. R. 66 E



7915' due east from SE Cor Cedar 9  
to section corner

24	19	T. 5 S.
25	30	
R. 65 E	R. 66 E	

84330  
FILED AND INDEXED AT REQUEST OF  
J.F. Leising  
Dec. 11, 1985  
A. 1 MINUTES PAST 1 O'CLOCK  
P. M. IN BOOK 49 OF OFFICIAL  
RECORDS, PAGE 119 LINCOLN  
COUNTY, NEVADA  
MURRIMO SETTEE  
COUNTY RECORDER  
Mara Corrae Deputy