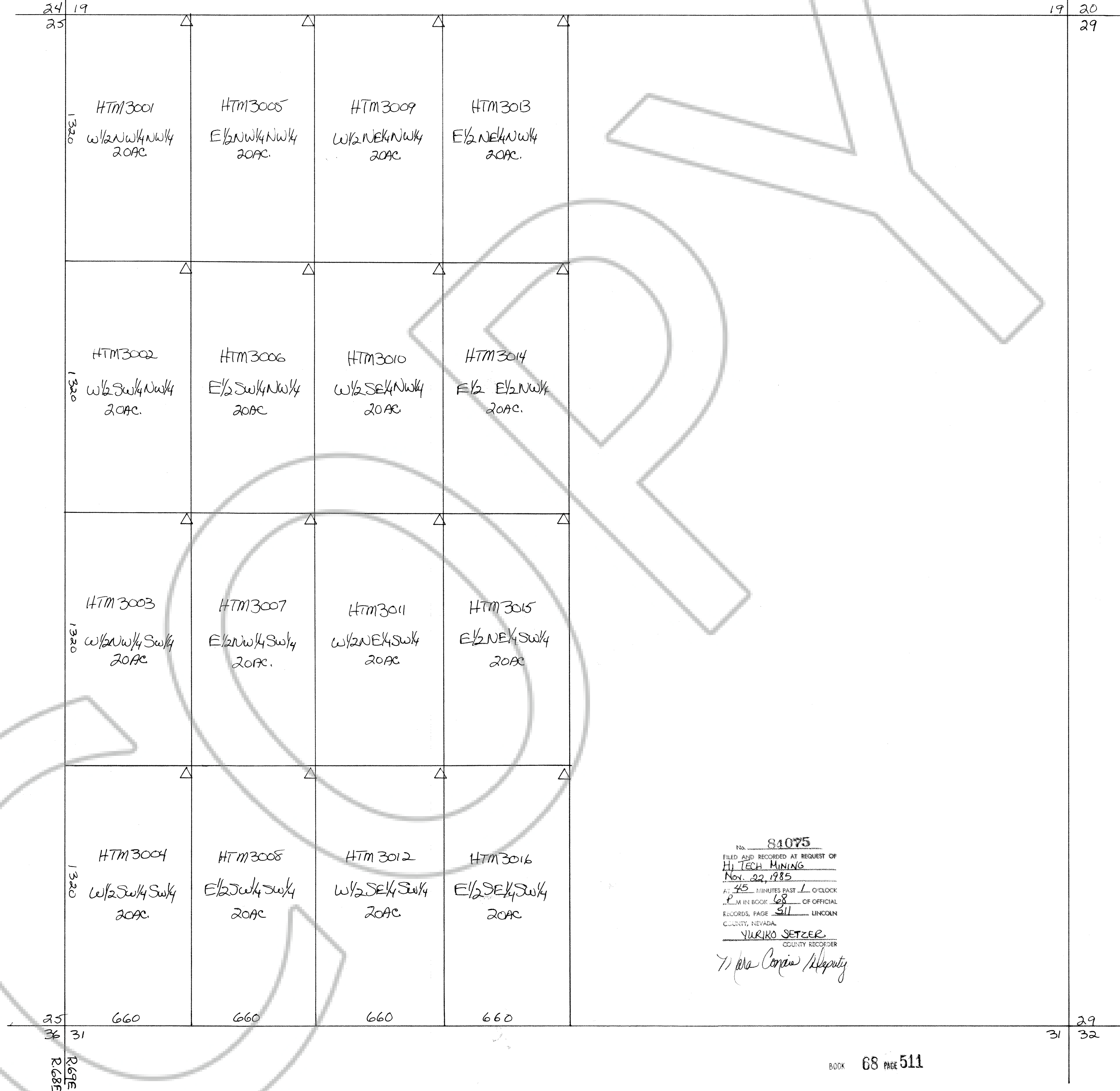
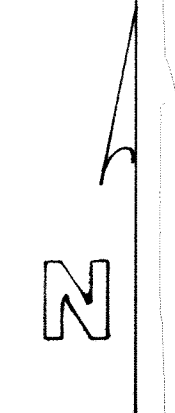


MAP OF HTM PLACER CLAIMS 3001-16 LOCATED 11-21-85 by Ron Schreiber For Hi-Tech Mining
 LOCATED IN SECTION 30 T2S R69E MDN 320 ACRES P.O. BOX 275 MOAPA NV. 89025

LINCOLN COUNTY, NEVADA
 SCALE (APPROX) 1" = 300'

△ = LOCATION MARKER 4"X4"X5' WOOD POST



No. 84075
 FILED AND RECORDED AT REQUEST OF
 HI TECH MINING
 Nov. 22, 1985
 AT 3:45 MINUTES PAST 1 O'CLOCK
 P.M. IN BOOK 68 OF OFFICIAL
 RECORDS, PAGE 511 LINCOLN
 COUNTY, NEVADA.
 YURIKO SETZER
 COUNTY RECORDER
 T. Ma Conroy Deputy