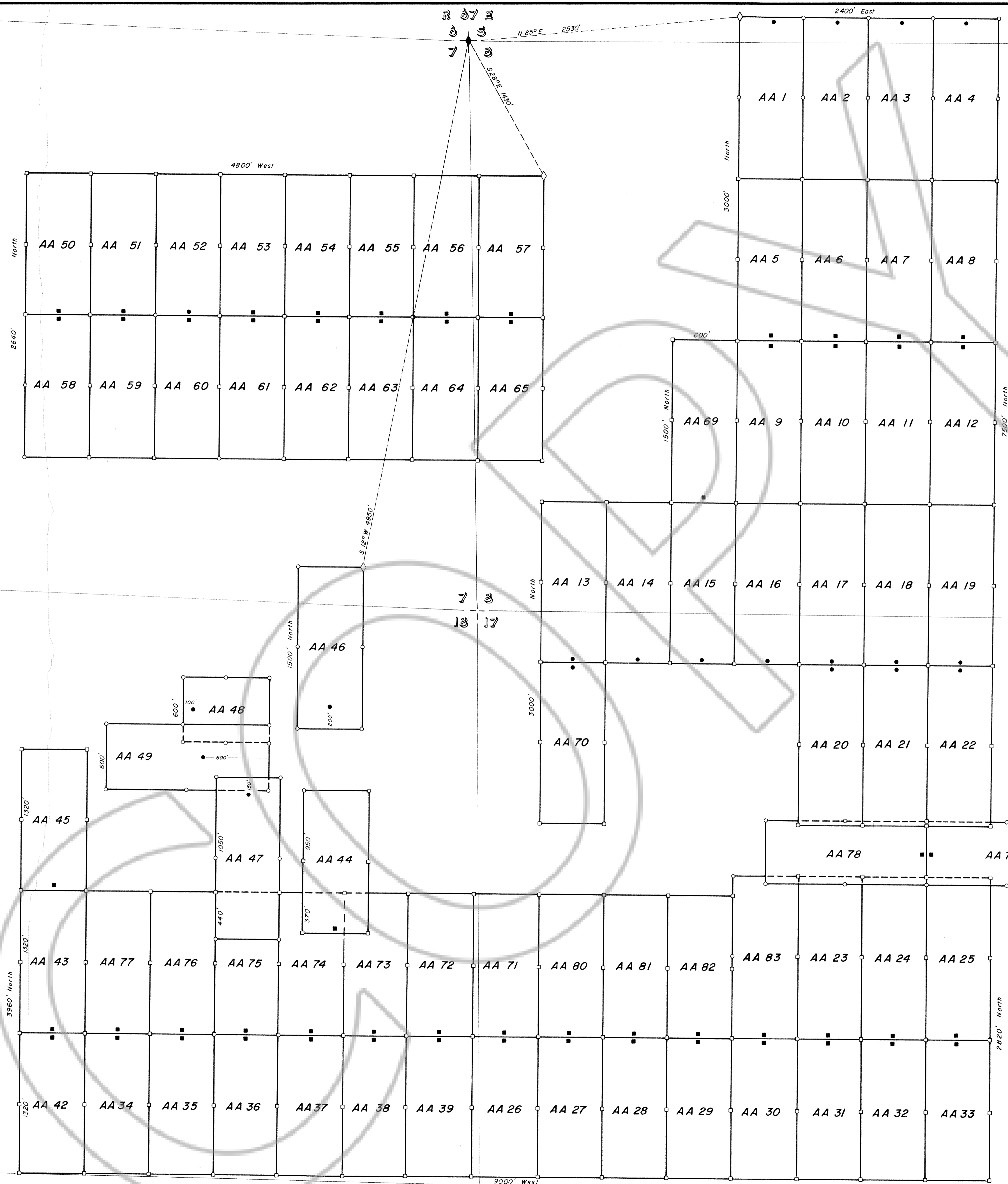
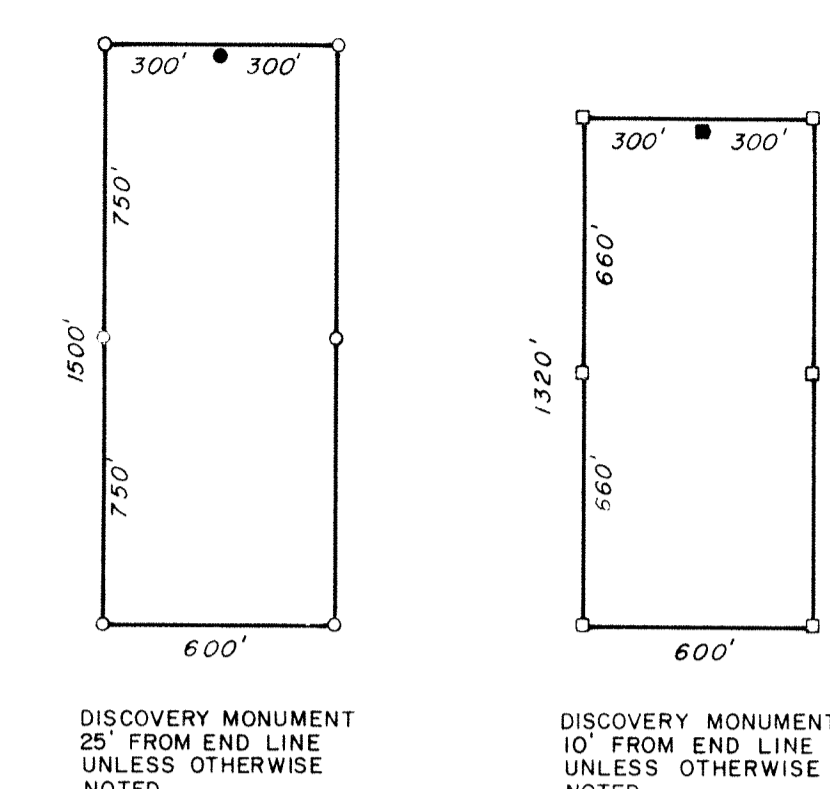




T 3 S



TYPICAL LODE CLAIMS



- WOODEN 4x4 POSTS
 - END AND CENTER CORNERS
 - DISCOVERY MONUMENT
- METAL 3x2 PIPE
 - END AND CENTER CORNERS
 - DISCOVERY MONUMENT
- ★ FOUND SECTION CORNER
- ◇ TIE CORNERS

LOCATED BY
 STEVE D. OLMORE
 DONALD G. MAC KERROW

Agents for
 HOMESTAKE MINING COMPANY
 P O BOX 10628
 RENO, NEVADA 89510

LOCATION DATES:

SEPT 21, 1985	AA 1 thru AA 12, AA 69
SEPT 22, 1985	AA 13 thru AA 22, AA 44, AA 46 thru AA 49, AA 70
SEPT 23, 1985	AA 23 thru AA 33, AA 39, AA 71, AA 72, AA 74, AA 80 thru AA 83
SEPT 24, 1985	AA 34 thru AA 38, AA 42, AA 43, AA 45, AA 50 thru AA 65, AA 73, AA 75 thru AA 79

No. 81058
 FILED AND RECORDED AT REQUEST OF
 HOMESTAKE MINING Co.
 Nov. 21, 1985
 25 MINUTES PAST 4 O'CLOCK
 P.M. IN BOOK 68 OF OFFICIAL
 RECORDS, PAGE 494 LINCOLN
 COUNTY, NEVADA.
 JURADO SETZER
 COUNTY RECORDER
 Maria Connie Henry

LODE CLAIM MAP
SHOWING
AA CLAIMS 1 thru 39, 42 thru 65,
and 69 thru 83

T. 3 S. / R. 67 E. MDBM
 CHIEF MINING DISTRICT
 LINCOLN COUNTY, NEVADA