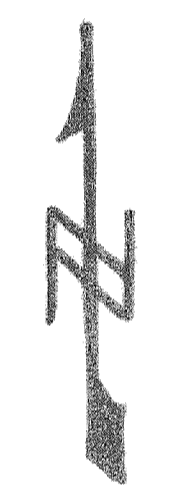


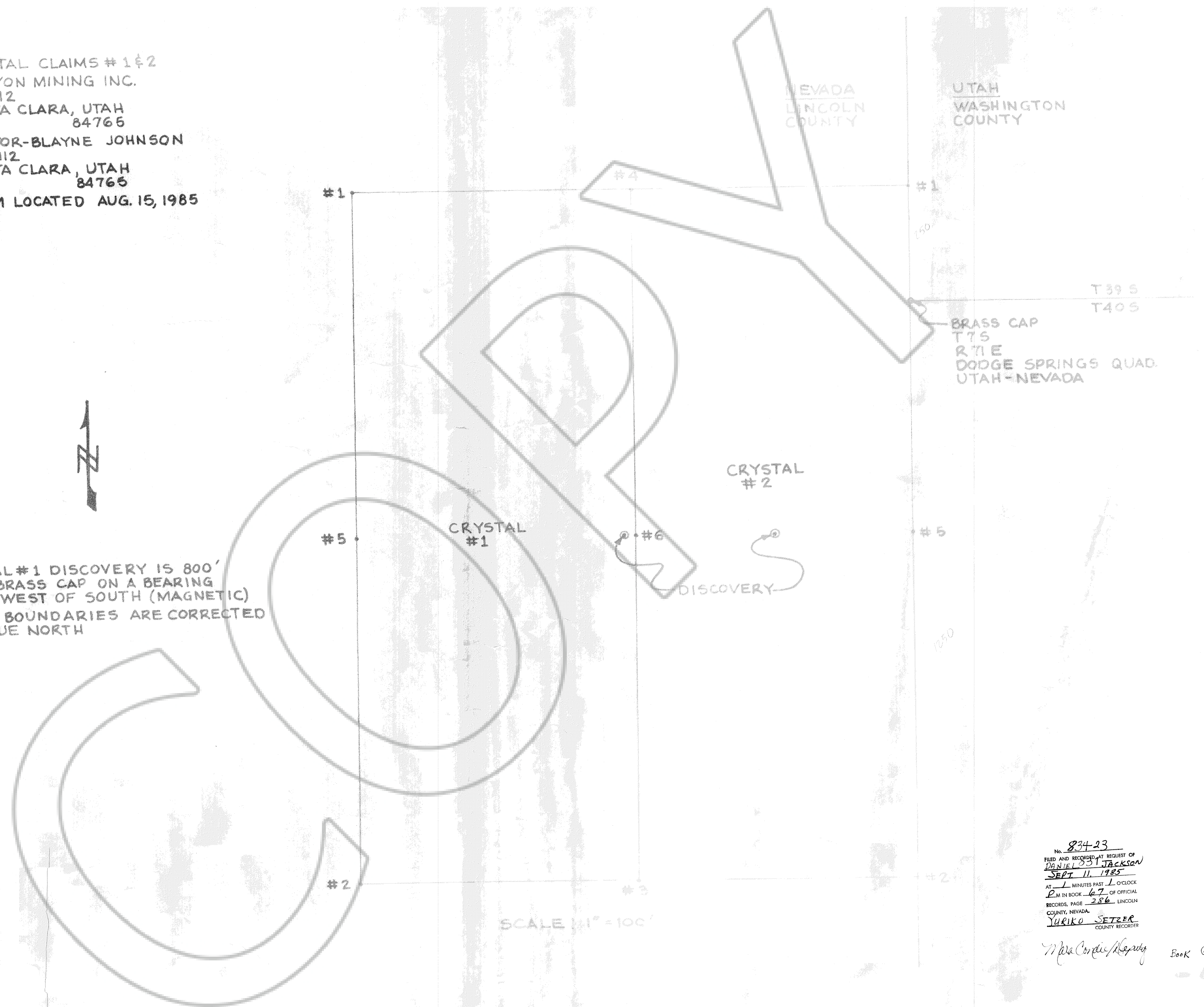
- 1) CRYSTAL CLAIMS # 1 & 2
- 2) CANYON MINING INC.
BOX 112
SANTA CLARA, UTAH
84766
- 3) LOCATOR-BLAYNE JOHNSON
BOX 112
SANTA CLARA, UTAH
84766
- 4) CLAIM LOCATED AUG. 15, 1985

NEVADA
LINCOLN
COUNTY

UTAH
WASHINGTON
COUNTY



CRYSTAL #1 DISCOVERY IS 800'
FROM BRASS CAP ON A BEARING
OF 35° WEST OF SOUTH (MAGNETIC)
CLAIM BOUNDARIES ARE CORRECTED
TO TRUE NORTH



No. 834-23
FILED AND RECORDED AT REQUEST OF
DANIEL B. JACKSON
SEPT 11, 1985
AT 1 MINUTES PAST 1 O'CLOCK
P.M. IN BOOK 67 OF OFFICIAL
RECORDS, PAGE 286 LINCOLN
COUNTY, NEVADA.
YURIKO SETZER
COUNTY RECORDER

Mara Cordie/Keparty

SCALE 1" = 100'