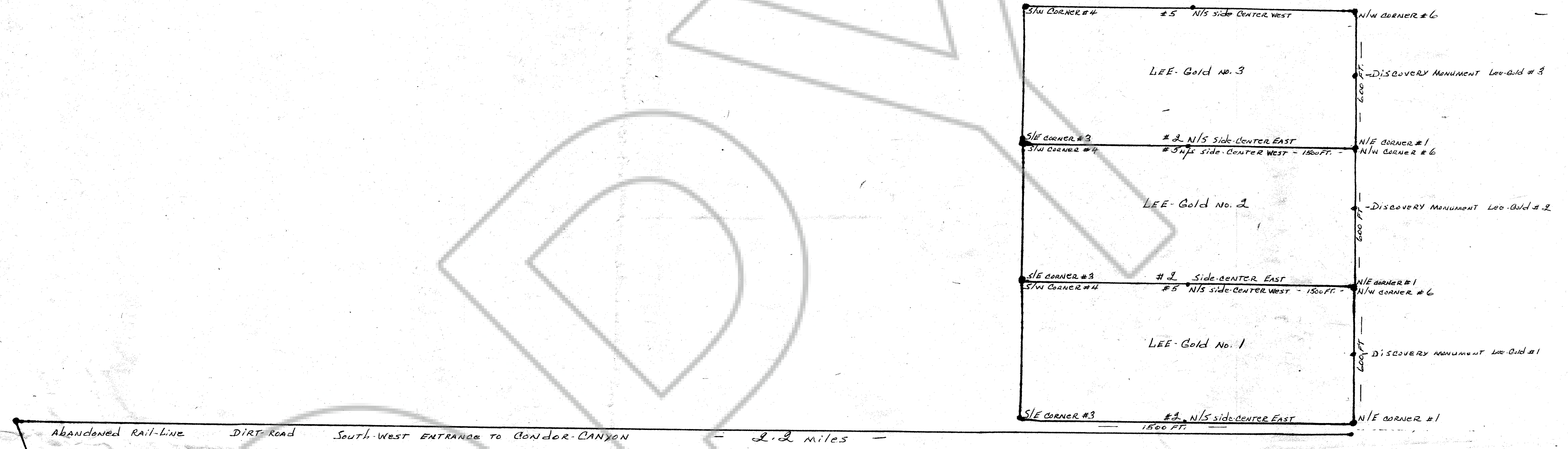
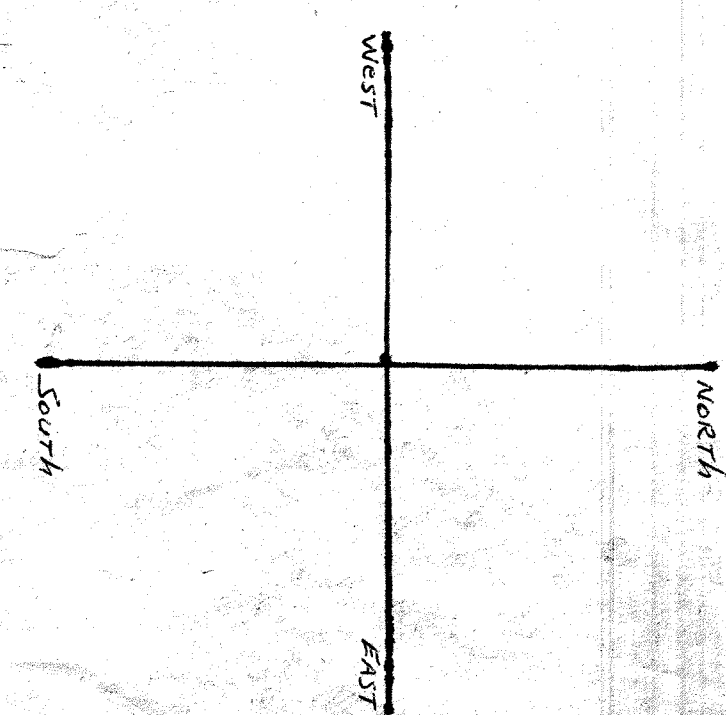


Lee - Gold Lode MINING CLAIMS IN SECTION 23, TOWNSHIP 1 S. RANGE 68 IN THE Pioche MINING DISTRICT, IN LINCOLN COUNTY, IN THE STATE OF NEVADA

LOCATED AUGUST 14, 1985  
 E. GLENN LEE  
 P.O. BOX 75  
 PANACA, NEV. 89042



NOTE: ALL MONUMENTS ARE 4"x4" WOODEN POSTS 6" LONG



No. 83162  
 FILED AND RECORDED, AT REQUEST OF  
E. GLENN LEE  
AUGUST 14, 1985  
 AT 45 MINUTES PAST 2 O'CLOCK  
 P.M. IN BOOK 600 OF OFFICIAL  
 RECORDS, PAGE 611 LINCOLN  
 COUNTY, NEVADA.  
YURIKO SETZER  
 COUNTY RECORDER  
*Mara Louise Murphy*