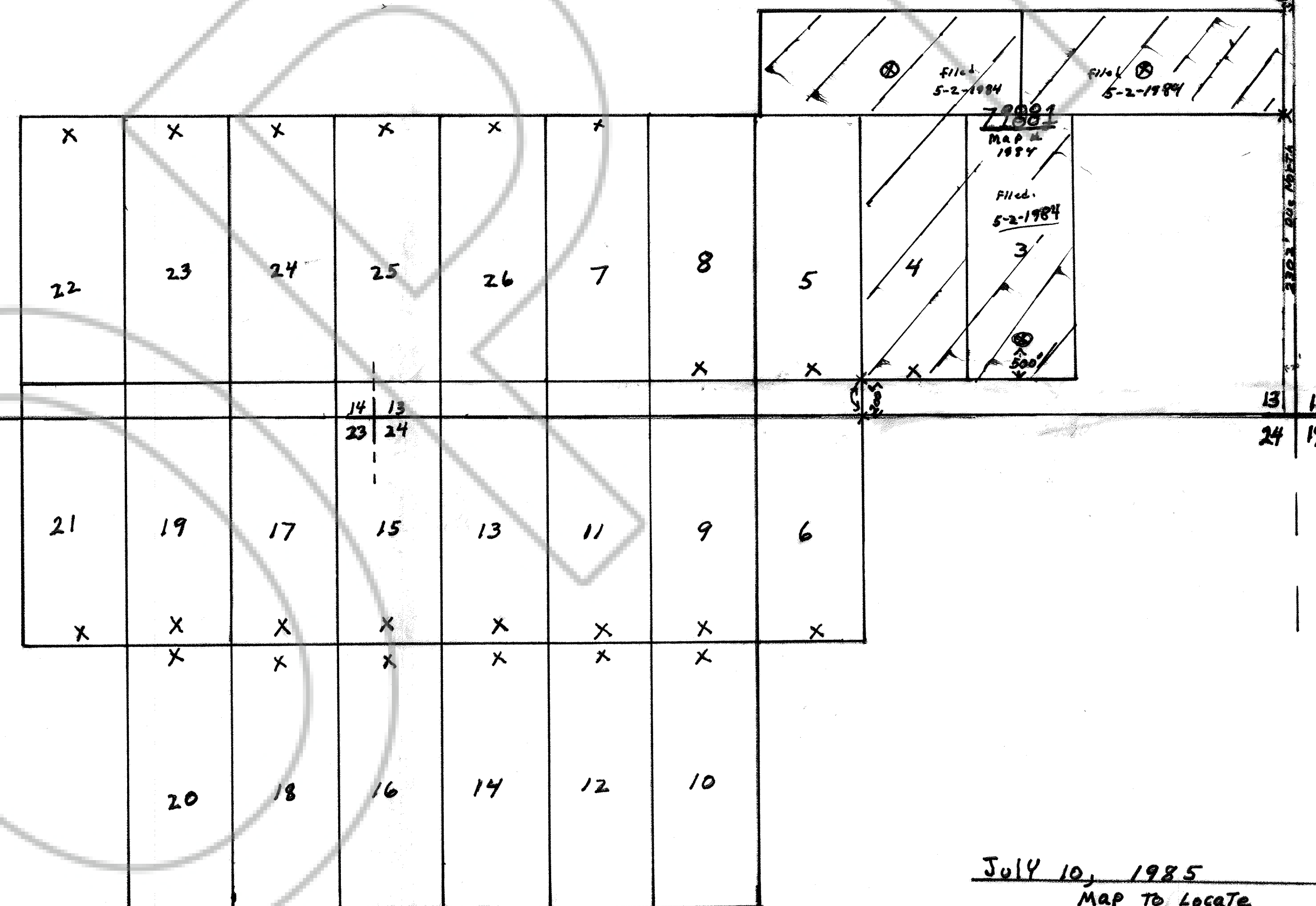


14/13  
Range 70 E.

13/18

70'

TNSP. 15.



July 10, 1985  
MAP TO LOCATE

H.P.ache Lode Claims 4 Thru 26

T.15. R.70E. Sec. 13-14-23-24

Klondike Mining DIST.

LINCOLN COUNTY Nevada

Cochise Mining Company

SR#89063 Box 172 Pioche Nevada 89063

83038  
 FILED AND RECORDED AT REQUEST OF  
 COCHISE MINING Co.  
 July 31, 1985  
 AT 3:55 MINUTES PAST 11 O'CLOCK  
 A.M. IN BOOK 66 OF OFFICIAL  
 RECORDS, PAGE 352 LINCOLN  
 COUNTY, NEVADA.  
*Yuriko Setzer*  
 COUNTY CLERK