

31

32

T. 1 N.
T. 1 S.

LINCOLN COUNTY, NEVADA
IRON COUNTY, UTAH

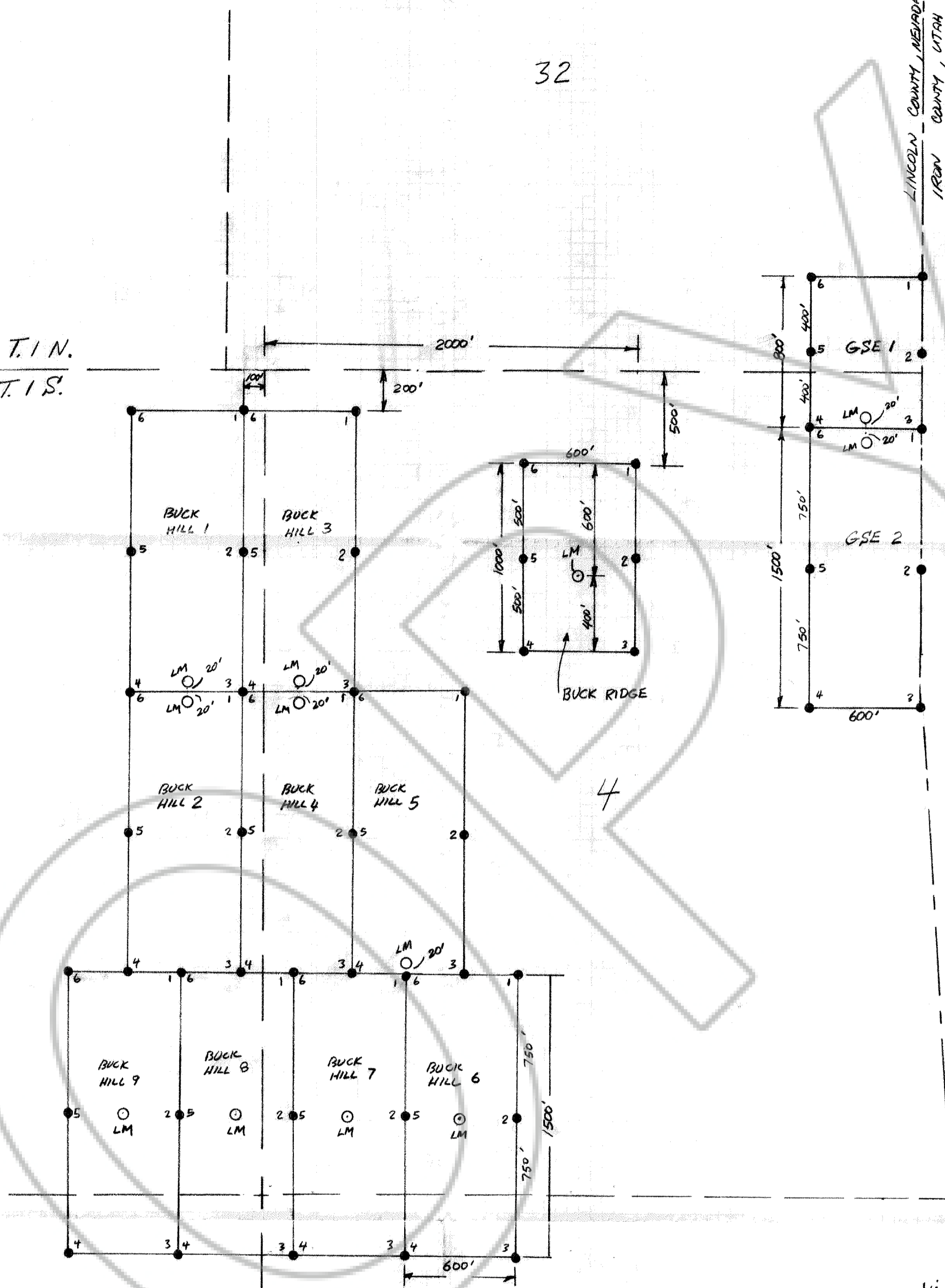


5

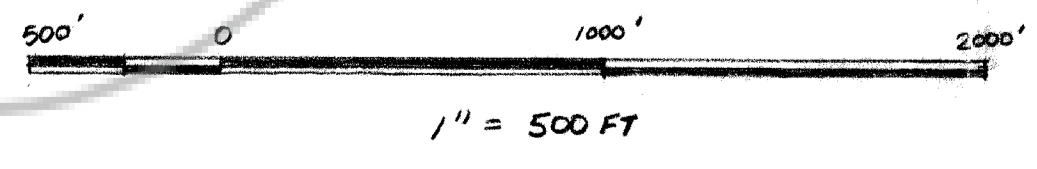
4

8

9



- NOTE**
1. ALL CLAIMS 600' X 1500', UNLESS OTHERWISE NOTED
 2. ALL LOCATION MONUMENTS ARE OFFSET 20' FROM END CENTERS UNLESS OTHERWISE NOTED.
 3. ALL LOCATION MONUMENTS, SIDE CENTERS AND CORNERS ARE MONUMENTED WITH 4" DIA BY 5' LONG PVC PIPE OR 4" DIA BLAZED TREES.
 4. BUCK HILL 1-9, BUCK RIDGE AND GSE 1 & 2 CLAIMS LOCATED SEPT 1, 1984.



R. 71 E.

No. 81427
 FILED AND RECORDED, AT REQUEST OF
ENERGEX RES. INC.
OCT 22, 1984
 AT 25 MINUTES PAST 1 O'CLOCK
 P.M. IN BOOK 62 OF OFFICIAL
 RECORDS, PAGE 500 LINCOLN
 COUNTY, NEVADA.
James Setzer
 COUNTY RECORDER

LEGEND

- LOCATION MONUMENT
- CORNER & SIDE CENTERS
- SECTION LINE
- NEV/UTAH BOUNDARY

MAP OF
 LODE MINING CLAIMS WITHIN
 TOWNSHIP 1 NORTH E 1 SOUTH, RANGE 71 EAST
 MOUNT DIARLO MERIDIAN
 LINCOLN COUNTY, NEVADA
 FOR
ENERGEX RESOURCES INC.
 1210 KLEPPE LANE, SPARKS, NEVADA
 89431
 by
DAVID R. DEERING, AGENT
David R. Deering

BOOK 62 PAGE 488