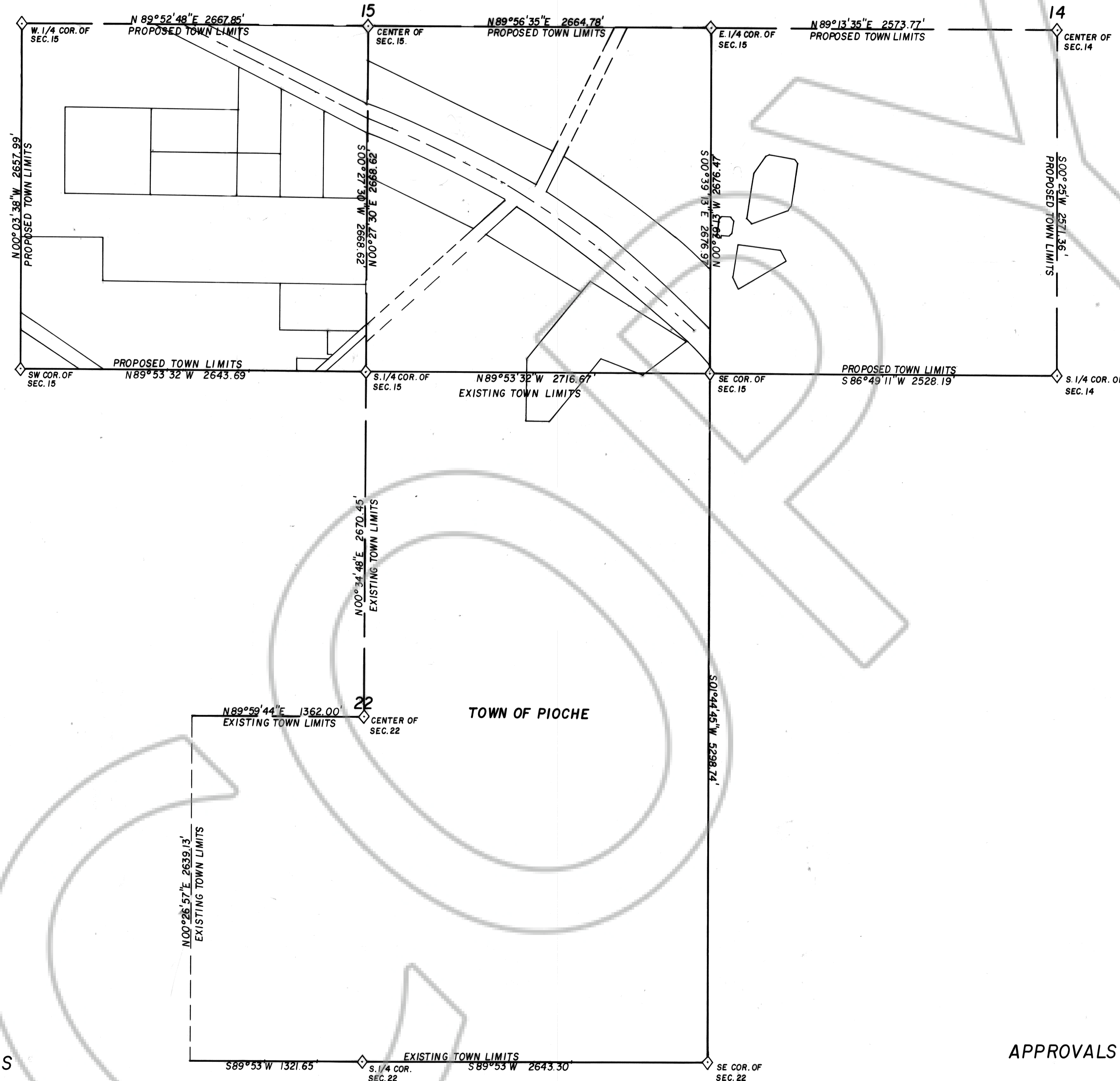


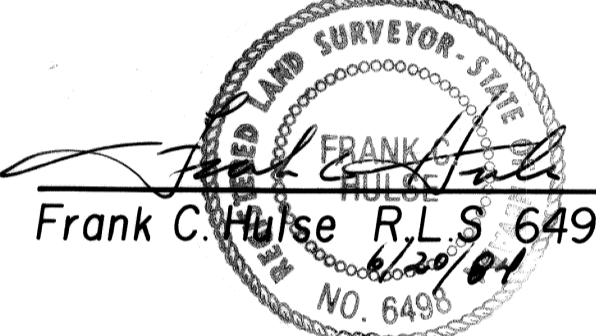
T. 1N, R. 67E, M.D.B. & M.



**SURVEYOR'S STATEMENT**

STATE OF NEVADA  
COUNTY OF LINCOLN ss


Frank C. Hulse states he is a Registered Land Surveyor in the State of Nevada. And that he was employed by the Lincoln County Commission to make the survey of the Pioche Town limits as described and as shown on this map; That the survey of said works was made under his direct supervision, and that such survey is accurately represented on this map.

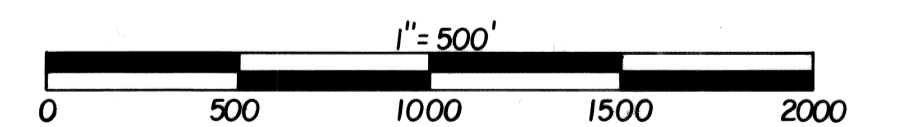
  
 Frank C. Hulse R.L.S. 6498  
 6/29/84

**APPROVALS**

This is to certify that the Director of Zoning and Comprehensive Planning, Lincoln County, Nev., on this 20 day of July, 1984, did approve for purposes of land division and accept in behalf of the public this map and any parcels of land offered for dedication for public use.

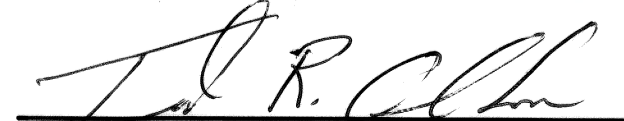

  
 Director

No. 81143  
 FILED AND RECORDED AT REQUEST OF  
 PIOCHE TOWN BOARD  
 SEPT. 14, 1984  
 AT 4:02 MINUTES PAST 10 O'CLOCK  
 P.M. IN ROOM 1212A OF OFFICIAL  
 RECORDS, PAGE 236 LINCOLN  
 COUNTY, NEVADA.  
  
 COUNTY CLERK



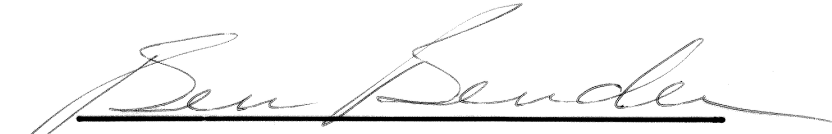
**APPROVALS**

Approved this 20 day of July, 1984.  
By the Lincoln County Commissioners.

  
 Chairman  
 Attest:   
 Clerk

**APPROVALS**

Approved this 20 day of July, 1984..  
By the Pioche Town Board.



MAP OF THE PROPOSED TOWN  
 LIMITS FOR PIOCHE, NEVADA.  
 PREPARED AT THE INSTANCE OF  
 THE LINCOLN CO. COMMISSION