

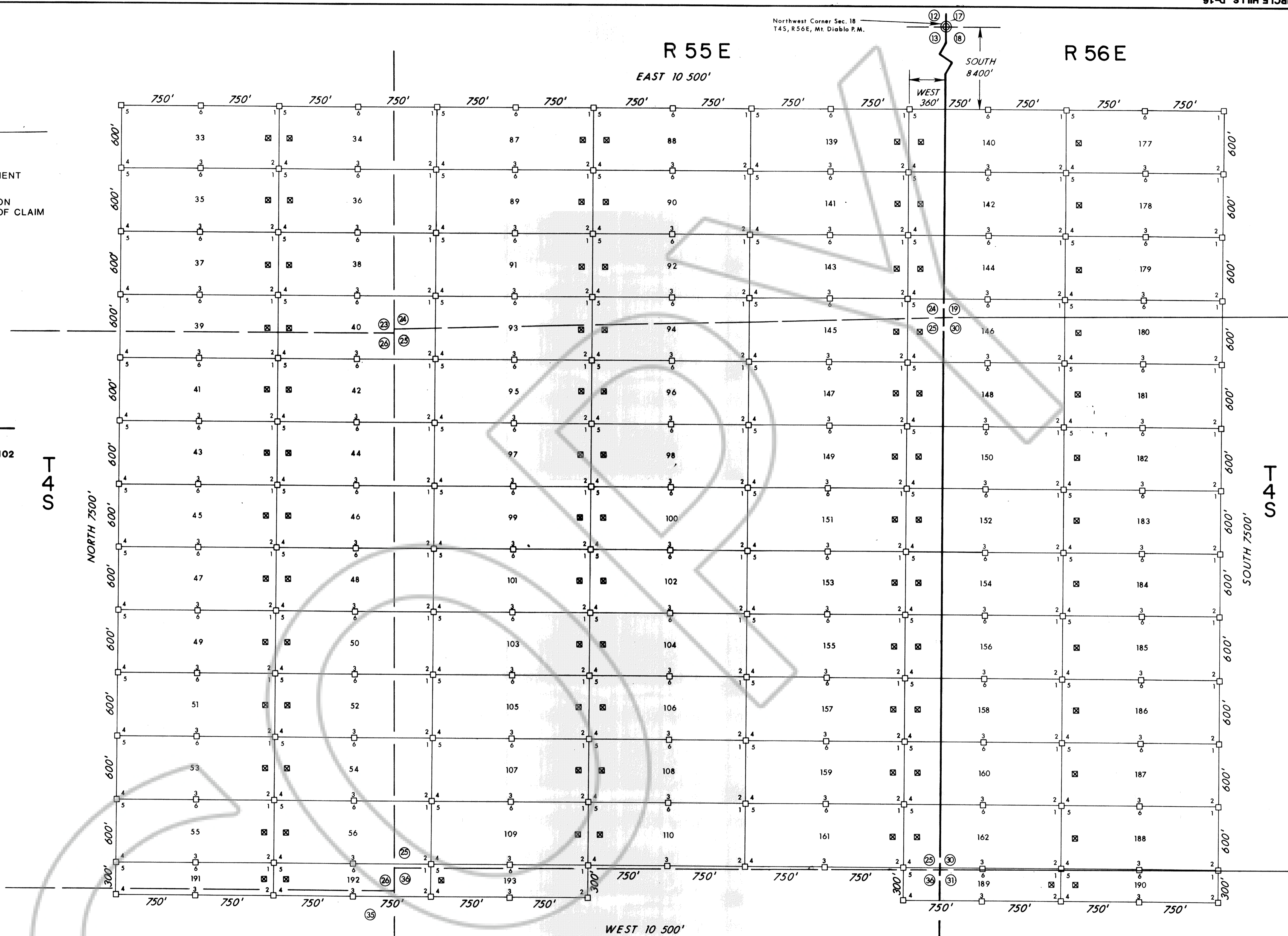
LEGEND

- INDICATES FOUND SURVEY CORNER
- INDICATES 4"x4"x5' WOOD POST MONUMENT
- INDICATES 4"x4"x5' WOOD POST LOCATION MONUMENT LOCATED 10' FROM END LINE OF CLAIM
- INDICATES SECTION CORNER

NOTE: SECTION LINES SHOWN ARE PROJECTED FROM INFORMATION OBTAINED FROM U.S.G.S. 7-1/2 AND 15 MINUTE QUAD. TOPO MAPS

ACQUISITION DATES

- APRIL 4, 1984- 1-24,70-90,103-112
- APRIL 5, 1984- 26-28,33-54, 58-69,94-102
- APRIL 6, 1984- 25,29-32,113-122
- APRIL 8, 1984- 55,56
- APRIL 9, 1984- 57,91
- APRIL 10, 1984- 92,93



Northwest Corner Sec. 18  
T 4 S, R 56 E, Mt. Diablo P.M.

R 55 E

R 56 E

EAST 10 500'

SOUTH 8400'

WEST 360'

NORTH 7500'

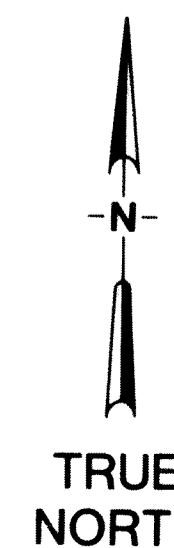
SOUTH 7500'

WEST 10 500'

80268  
80269  
FILED AND RETURNED TO RECORDS OF  
EXXON MINERALS CO.  
JUNE 26, 1984  
AS 1 MINUTE DISG. CHANGES  
PLAN BY BOOK 60 OF OFFICIAL  
RECORDS, PAGE 321  
COUNTY RECORDS  
Quinda Selger  
COUNTY RECORDER

Located by:  
EXXON MINERALS COMPANY  
P.O. BOX 4508  
HOUSTON, TEXAS 77210

Map 2 of 2 maps



<b>EXXON MINERALS COMPANY</b> U.S. EXPLORATION	
AREA <b>CIRCLE HILLS</b>	
TITLE <b>CH Lode Claims</b>	
COUNTY <b>LINCOLN</b>	STATE <b>NEVADA</b>
CONTOUR INTERVAL	SCALE <b>1"=500'</b>
PROJECT NO.	DATE <b>JUNE 15, 1984</b>
CHECKED BY	DRAFTED BY <b>D.M.CYRUS</b>
REVISED	DATE BY