

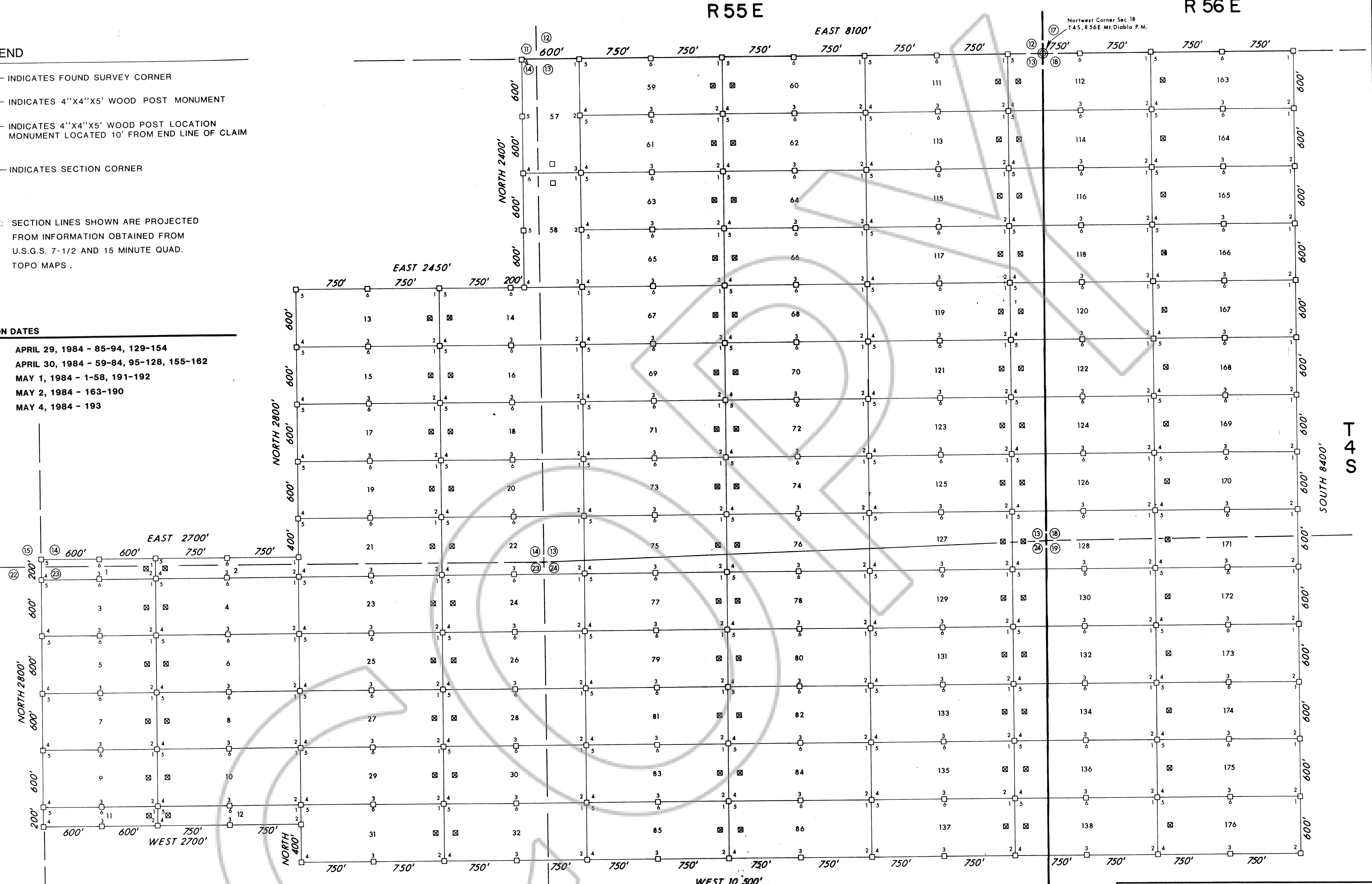
LEGEND

- ⊙ — INDICATES FOUND SURVEY CORNER
- — INDICATES 4"X4"X5' WOOD POST MONUMENT
- ⊠ — INDICATES 4"X4"X5' WOOD POST LOCATION MONUMENT LOCATED 10' FROM END LINE OF CLAIM
- ① ② ③ ④ — INDICATES SECTION CORNER

NOTE: SECTION LINES SHOWN ARE PROJECTED FROM INFORMATION OBTAINED FROM U.S.G.S. 7-1/2 AND 15 MINUTE QUAD. TOPO MAPS.

LOCATION DATES

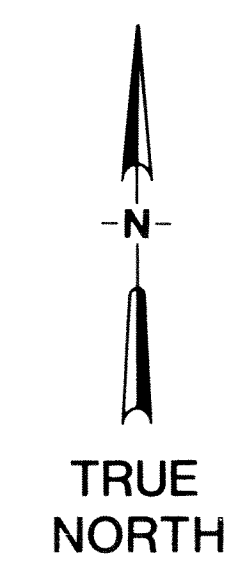
- APRIL 29, 1984 - 85-94, 129-154
- APRIL 30, 1984 - 59-84, 95-128, 155-162
- MAY 1, 1984 - 1-58, 191-192
- MAY 2, 1984 - 163-190
- MAY 4, 1984 - 193



800872
 No. 2
 This map is hereby recorded in the name of
EXXON MINERALS Co.
 JUNE 26, 1984
 1. NUMBERED 9 OFFICE
 HANDED 60 OF OFFICE
 RECORDS, PAGE 320
 COUNTY RECORDS
 Lincoln Nevada
Quicke Setzer
 COUNTY RECORDER

Located by:
EXXON MINERALS COMPANY
 P.O. BOX 4508
 HOUSTON, TEXAS 77210

Map 1 of 2 maps



EXXON MINERALS COMPANY U.S. EXPLORATION	
AREA CIRCLE HILLS	
TITLE CH Lode Claims	
COUNTY LINCOLN	STATE NEVADA
CONTOUR INTERVAL	SCALE 1"=500'
PROJECT NO.	DATE JUNE 15, 1984
CHECKED BY	DRAFTED BY D.M. CYRUS
REVISED DATE BY	