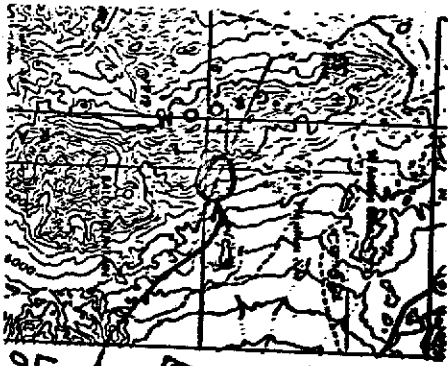


TRUE

1" = 500'

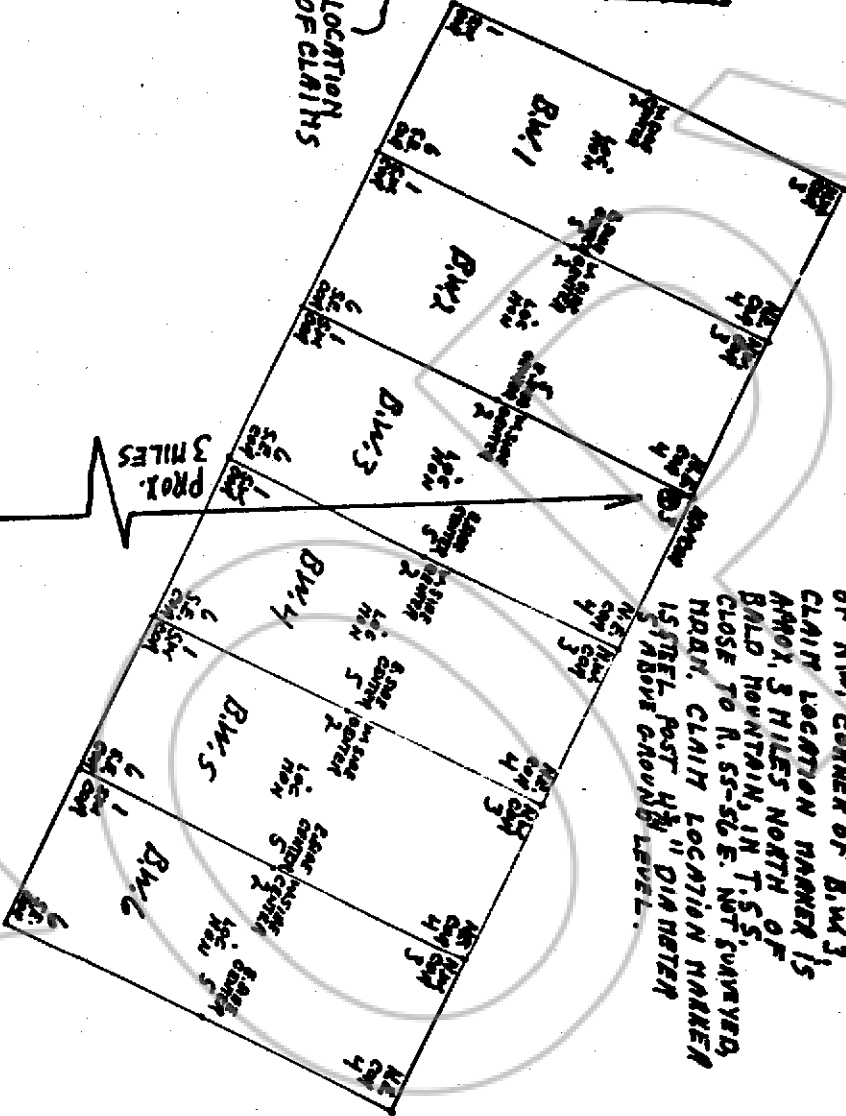
NOTE: ALL MONUMENTS ARE 4"x4" WOODEN POSTS 5' LONG



LOCATION OF CLAIMS

BALD MOUNTAIN

3 MILES PROX.



CLAIM LOCATION MARKER
LOCATED ON BECK AS SOUTH
OF N.W. CORNER OF B.W. 3,
CLAIM LOCATION MARKER IS
APPROX. 3 MILES NORTH OF
BALD MOUNTAIN, IN T. 5 S.,
RANGE 6 E., SEC. 10 E.,
CLOSE TO R. 55-56 E. NOT QUAYED,
HORN. CLAIM LOCATION MARKER
IS STEEL POST 4" DIA NUTEN
5" ABOVE GROUND LEVEL.

79973

No. 79973
FILED AND RECORDED AT REQUEST OF
Joe B. Fallini
MAY 21, 1984
AT 15 MINUTES PAST 3 O'CLOCK
P. M. IN BOOK 59 OF OFFICIAL
RECORDS, PAGE 642 LINCOLN
COUNTY, NEVADA.

Joe B. Fallini
COUNTY RECORDER

N. 25° E

B.W. GROUP OF
6 LODGE CLAIMS
GROOH RANGE LINCOLN
COUNTY, NEVADA
LOCATED 30TH DAY
OF APRIL, 1984
BY THE B. FALLINI TR
AND SUSAN FALLINI
TWIN SPRINGS VIA
TONOPAH, NEVADA
89049