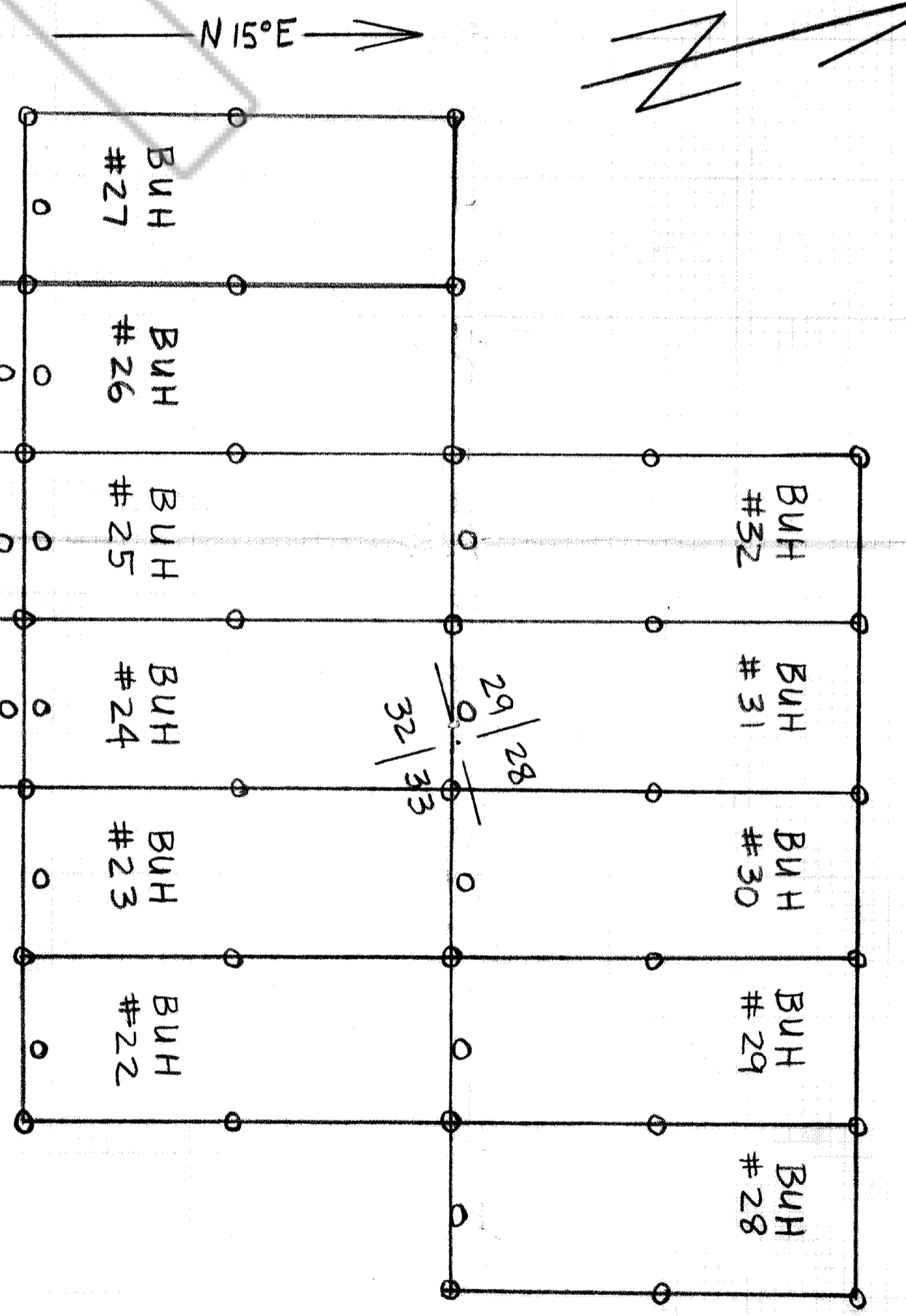
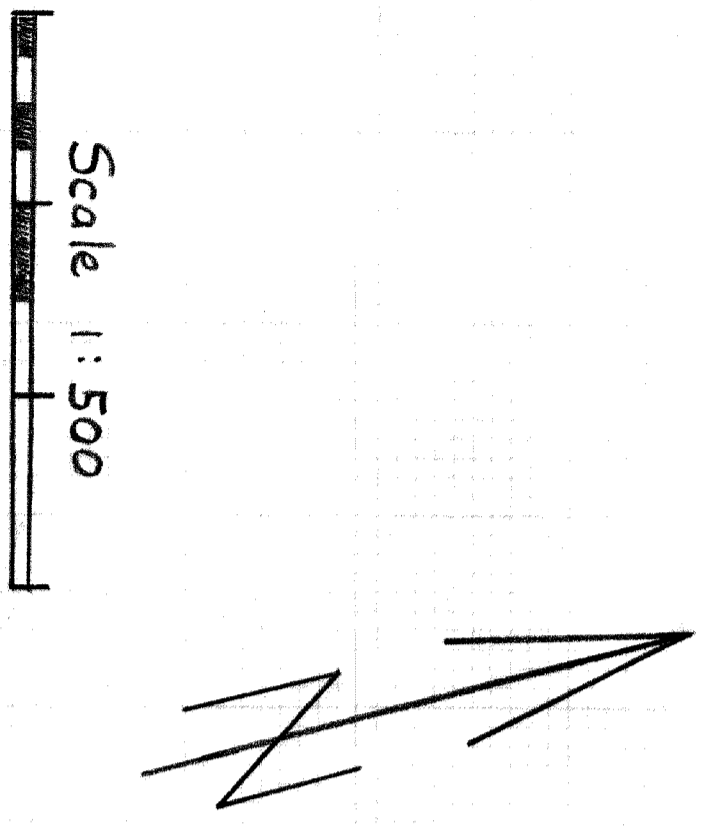


NWX, Inc.
 BUH Claims 1-32 (incl)
 T10N R64E Secs. 28, 29, 32, 33
 T9N R64E Sec. 5
 Cave Mining District
 White Pine & Lincoln Counties, Nevada

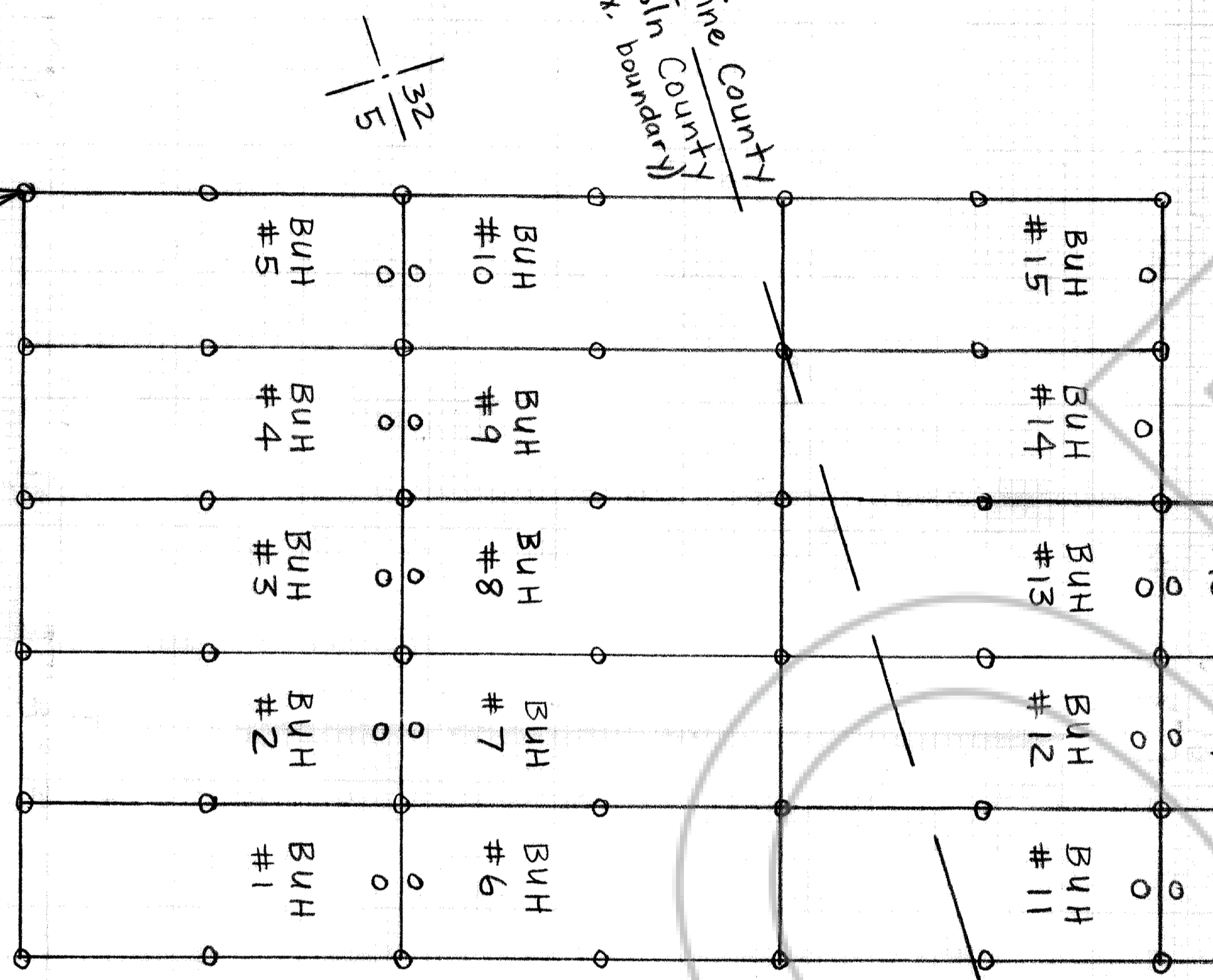
79432
 FILED AND RECORDED AT REQUEST OF
 JOHN BREITRICK
 JAN. 23, 1984
 AT 1 MINUTES AND 10 SECONDS
 A.M. IN BOOK 58 OF OFFICIAL
 RECORDS, PAGE 363 LINCOLN
 COUNTY, NEVADA.
 Thomas Setzer
 COUNTY RECORDER



Note: All claims are 600' X 1500'.
 -location monuments are 10' inside end lines.
 -corner and end center posts are 4" X 4.5' PVC Pipe
 -these claims were located on Nov. 17, and Dec. 28, 1983 for

NWX, Inc.
 P.O. Box 727
 Minden, Nevada
 89423
 -section corners are unsurveyed and approximate locations are shown

White Pine County
 Lincoln County
 (approx boundary)



The SW corner of BUH #5 is approx. 3850' N 10° E from the surveyed corner of Secs. 5, 6, 7 & 8.

6 | 5
 7 | 8