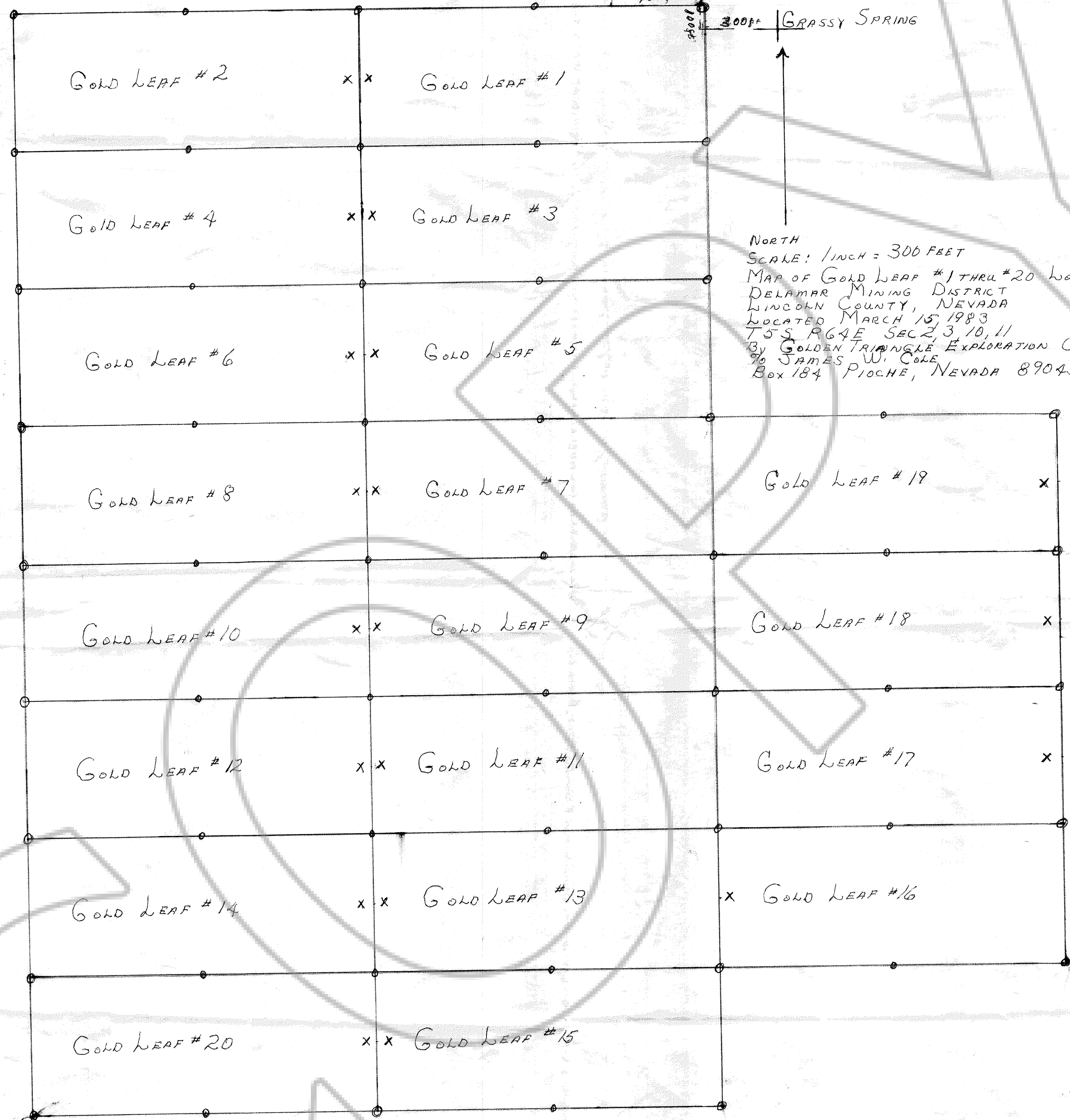


34 35  
3 2

2500 FT

400 FT

GRASSY SPRING



NORTH  
 SCALE: 1 INCH = 300 FEET  
 MAP OF GOLD LEAF #1 THRU #20 WOOD CLAIM GROUP  
 DELAMAR MINING DISTRICT  
 LINCOLN COUNTY, NEVADA  
 LOCATED MARCH 15, 1983  
 TOWNSHIP 36 N, RANGE 10 E, SECTION 10, 11  
 BY GOLDEN TRIANGLE EXPLORATION CO. LTD  
 % JAMES W. COLE  
 Box 184, PIOCHE, NEVADA 89043

pg 102B  
 10/14/83

No. 77585  
 FILED AND RECORDED AT REQUEST OF  
 MAX MCCLOSKEY  
 April 13, 1983  
 AT 1 MINUTES PAST 1 O'CLOCK  
 P.M. IN BOOK 54 OF OFFICIAL  
 RECORDS, PAGE 328, LINCOLN  
 COUNTY, NEVADA.  
*Yvonne A. [Signature]*  
 COUNTY RECORDER