

Lincoln County

KNOW ALL MEN BY THESE PRESENTS, that D.B. Westtown Agent for _____

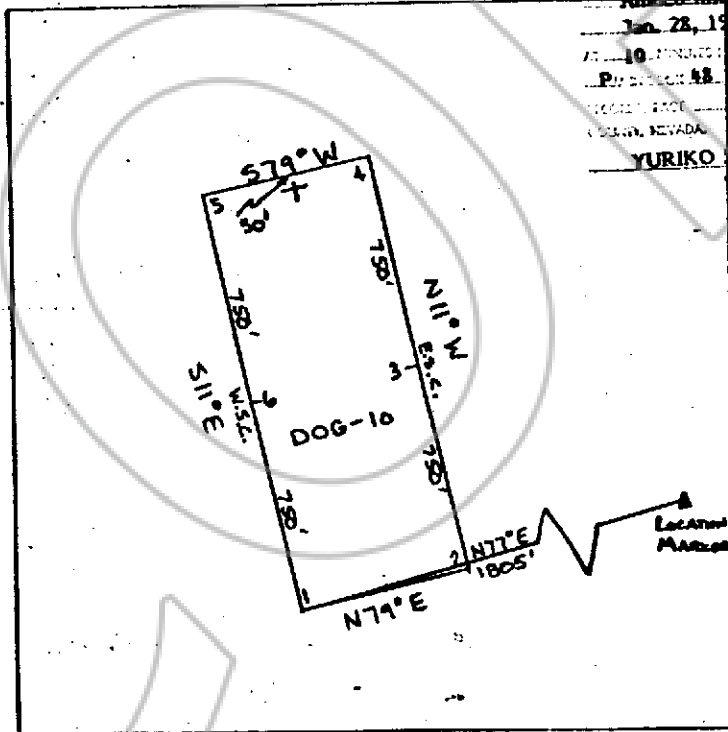
AMOCO MINERALS COMPANY
 has located the DOG-10 Lode Mining Claim, and by this certificate, and by right of discovery and location, claim 1500 feet, linear and horizontal measurement along the vein thereof, with all its dips, angles and variations as allowed by law, 1450 feet on said vein running S11°E from the discovery notice and 50 feet running N11°W from the discovery notice together with 300 feet on each side of the middle of said vein at the surface, and all veins, lodes, ledges, deposits and surface ground within the lines of said claim, situated in the UNINCORPORATED Mining District, County of LINCOLN and State of Nevada, located in the SW 1/4, NW 1/4 AND SE 1/4, NW 1/4 AND NW 1/4, SW 1/4 AND NE 1/4, SW 1/4, SEC 8

R 6 E, T 8 S Mt. Diablo P.M., and described by the metes and bounds as follows, to-wit:

Beginning at Corner No. 1; Whence the LOCATION MARKER BEARS; N77°E 1805'
 Thence, N79°E 600 feet to Corner No. 2;
 Thence, N11°W 750 feet to the EAST Side Center;
 Thence, N11°W 750 feet to Corner No. 4;
 Thence, S79°W 600 feet to Corner No. 5;
 Thence, S11°E 750 feet to the WEST Side Center;
 Thence, S11°E 750 feet to Corner No. 1, the point of beginning.

Location work consists of making maps as provided in N.R.S. 517.040

MAP OF CLAIM



74409

FILED AND RECORDED AT REQUEST OF
Amoco Minerals Co.
Jan 28, 1982
 AT 10 MINUTES ST. 2 O'CLOCK
P.M. OF OFFICIAL
BOOK 48 OF OFFICIAL
PAGE 312 LINCOLN
 COUNTY, NEVADA
YURIKO SETZER
 COUNTY RECORDER

Deputy

Said lode was discovered on NOVEMBER 20, 1981
 and located on DECEMBER 8, 1981
 Dated: DECEMBER 17, 1981

D.B. Westtown, Agent
 AMOCO MINERALS CO.
 1005 Terminal Way, Suite 100
 Reno, Nevada 89502