

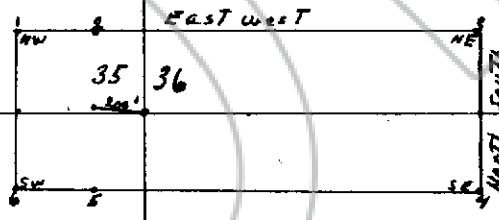
Lincoln County

1
2
3
4
5
6
7
8
9
10
11
12
13
14
15
16
17
18
19
20
21
22
23
24
25
26
27
28
29
30



72406

No. 72406
FILED AND RECORDED AT REQUEST OF
ALBERT COTTINE
June 8, 1981
AT 25 MINUTES PAST 4 O'CLOCK
P.M IN BOOK 44 OF OFFICIAL
RECORDS, PAGE 390 LINCOLN
COUNTY, NEVADA.
Yvonne DeLeon
COUNTY RECORDER



Discovery monument 200 west from S corner section 35 + 36

Map of Lockert #1 claim, abandoned claim

Section 35 Township 1 N Range 67 E,

Mining District Ely

County of Lincoln

Locator Albert G Cottine Piche, Nevada